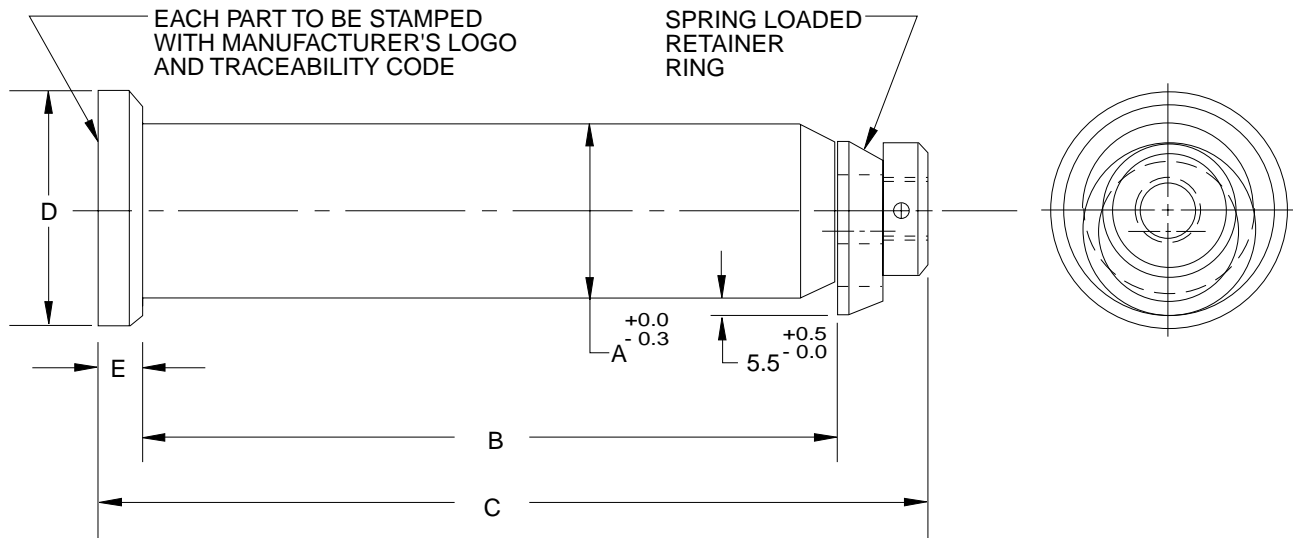


# LIFT COMPONENTS INDEX

PAGE	DATE	SERIES	DESCRIPTION
<a href="#">L-1</a>	08/01/11		Lift Components Index
<a href="#">L-2</a>	04/27/01	L01	Die Lift Pin With Spring Retainer Ring
<a href="#">L-3</a>	01/03/95	L11	Casting Liner For Die Lift Pin
<a href="#">L-4</a>	06/03/10	L31	Eye Bolt Inserts
<a href="#">L-5</a>	08/01/11	L21	Lift Pin Liner

# DIE LIFT PIN WITH SPRING RETAINER RING

(L01 SERIES)



A

NAAMS CODE	A DIA.	B	C	D	E
L013512	35	125	165	45	10
L015019	50	190	230	63	10
L016328	63	280	320	76	10
L018032	80	320	370	89	15

**NOTES & SPECIFICATIONS:**

Material, steel  
 Tensile strength 965 MPa (140 ksi)  
 Yield strength 860 MPa (125 ksi)

# CASTING LINER FOR DIE LIFT PIN

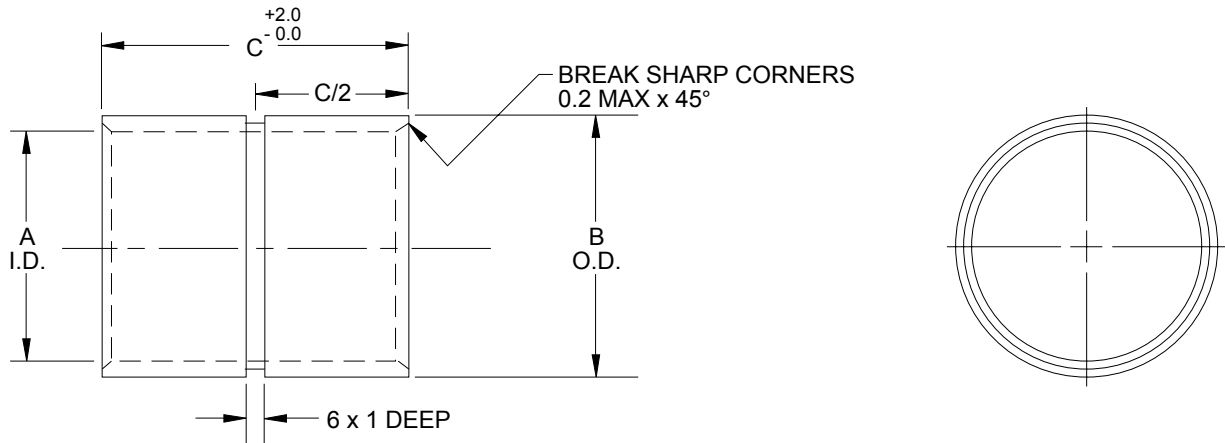
(L11 SERIES)

GLOBAL STANDARD COMPONENTS



Stamping

01/03/95



NAAMS CODE	LIFT PIN DIA.	A I.D.	B O.D.	C	EQUIVALENT TUBE - INCHES	
					O/S DIA.	WALL THK.
L115050	50	52	60	50	2-3/8	.156
L116380	63	65	73	80	2-7/8	.156
L118010	80	83	92	100	3-5/8	.188

**NOTES & SPECIFICATIONS:**

Material, steel

# EYE BOLT INSERTS

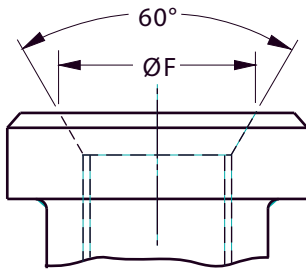
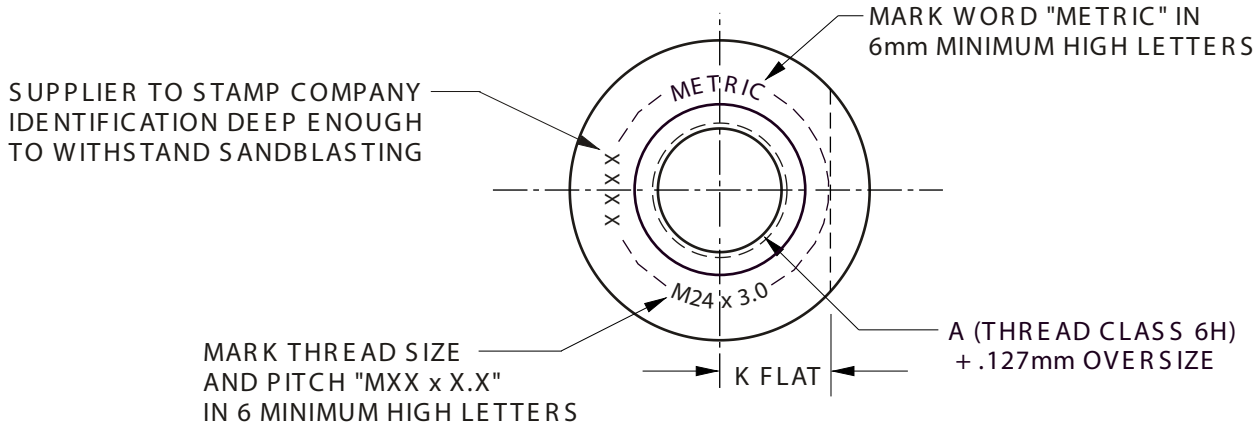
(L31 SERIES)

GLOBAL STANDARD COMPONENTS

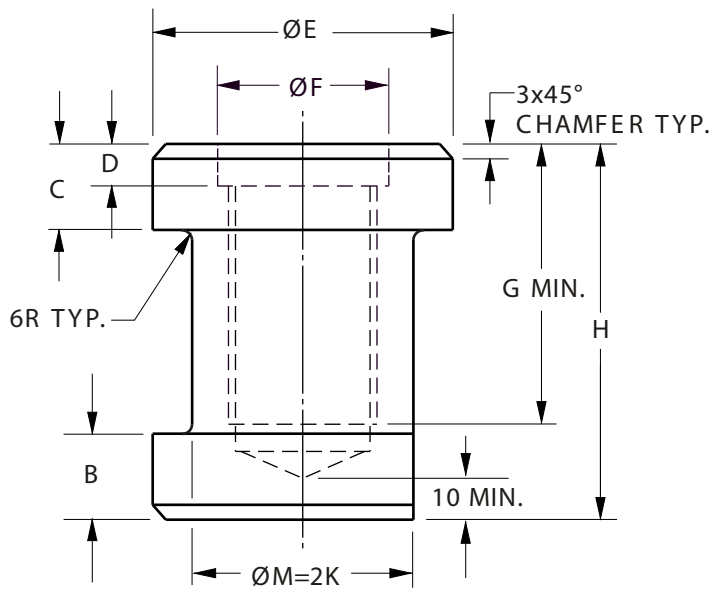


Stamping

06/03/10



FOR L314850  
ONLY



NAAMS CODE	A	B	C	D	ØE	ØF	G	H	ØM	K FLAT
L311672	M16 x 2.0	16	12	7	45	18	42	72	32	16
L312080	M20 x 2.5	16	12	8	50	22	50	80	36	18
L312288	M22 x 2.5	16	12	9	54	26	54	88	42	21
L312488	M24 x 3.0	16	12	9	54	26	54	88	42	21
L313000	M30 x 3.5	20	20	10	70	33	70	100	50	25
L313612	M36 x 4.0	22	22	10	80	39	82	112	60	30
L314850	M48 x 5.0	30	30	-	108	60	110	150	80	40

**NOTES & SPECIFICATIONS:**

Material: AISI-1144 Fatigue Proof or 4140 quenched & tempered to minimum tensile strength of 950 MPa and yield strength of 834 MPa and a hardness of 29-35 Rockwell "C".

**NO SUBSTITUTIONS ALLOWED**

# LIFT PIN LINER

(L21 SERIES)

GLOBAL STANDARD COMPONENTS

**NAAMS** 

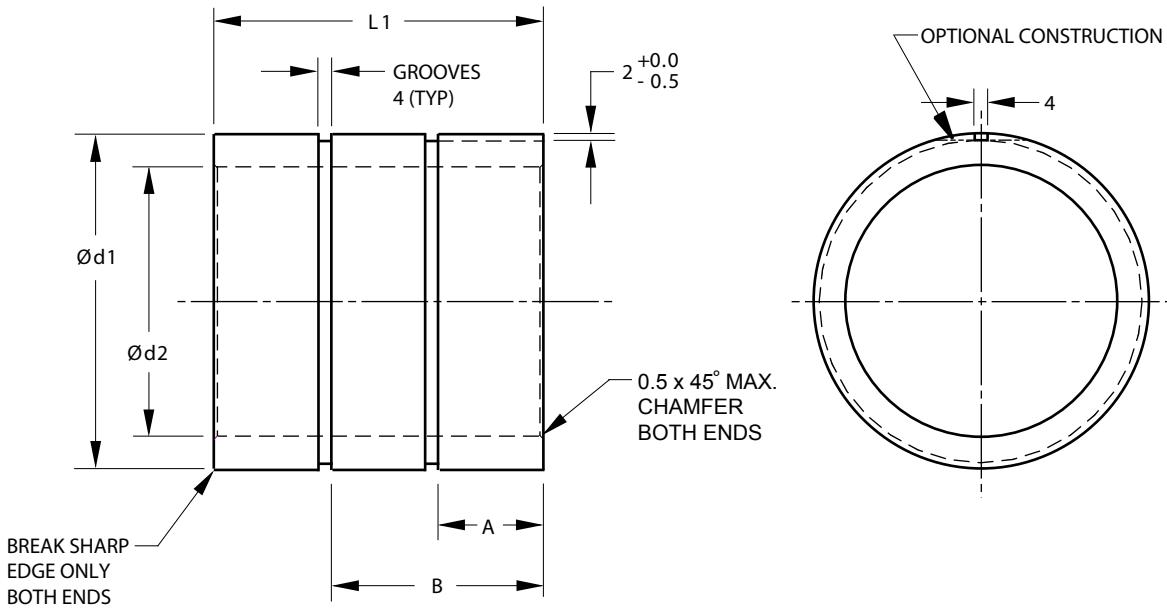
TM

Stamping

08/01/11

MATERIAL: ISO 2604/2 TS5 OR ISO 3305 STEEL TUBING

- Break all edges.
- Mark with NAAMS code and manufacturer's logo.
- Liner to be placed in pattern and alignment verified at foundry.
- Optional construction - 2 mm deep flat instead of 2 mm deep x 4 mm wide groove.



NAAMS CODE	d1 +2/-0	d2 +0.6/-0.0	L 1	A	B
L210032	44	34	40	18	-
L210040	52	42	50	23	-
L210050	62	52	60	28	-
L210063A	75	65	80	38	-
L210063B	75	65	75	35	-
L210080	100	82	100	32	64