

LIFT COMPONENTS INDEX

GLOBAL STANDARD COMPONENTS



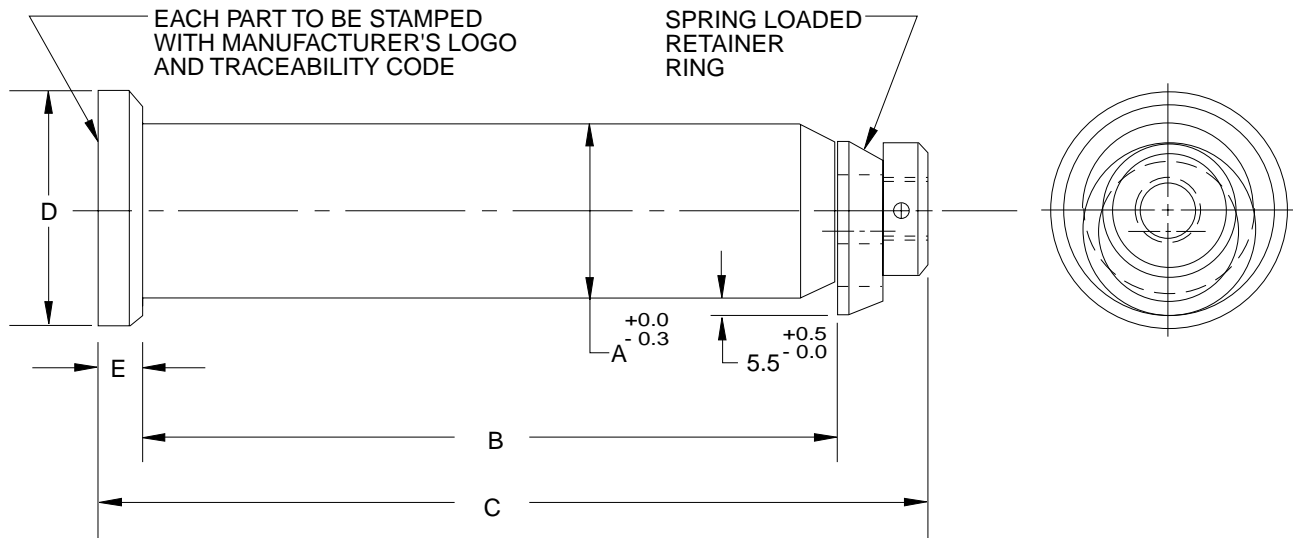
Stamping

12/17/10

| PAGE | DATE | SERIES | DESCRIPTION |
|---------------------|-------------|---------------|--|
| L-1 | 06/03/10 | | Lift Components Index |
| L-2 | 04/27/01 | L01 | Die Lift Pin With Spring Retainer Ring |
| L-3 | 01/03/95 | L11 | Casting Liner For Die Lift Pin |
| L-4 | 06/03/10 | L31 | Eye Bolt Inserts |
| L-5 | 12/17/10 | L21 | Lift Pin liner |

DIE LIFT PIN WITH SPRING RETAINER RING

(L01 SERIES)



| NAAMS CODE | A DIA. | B | C | D | E |
|------------|--------|-----|-----|----|----|
| L013512 | 35 | 125 | 165 | 45 | 10 |
| L015019 | 50 | 190 | 230 | 63 | 10 |
| L016328 | 63 | 280 | 320 | 76 | 10 |
| L018032 | 80 | 320 | 370 | 89 | 15 |

NOTES & SPECIFICATIONS:

- Material, steel
- Tensile strength 965 MPa (140 ksi)
- Yield strength 860 MPa (125 ksi)

CASTING LINER FOR DIE LIFT PIN

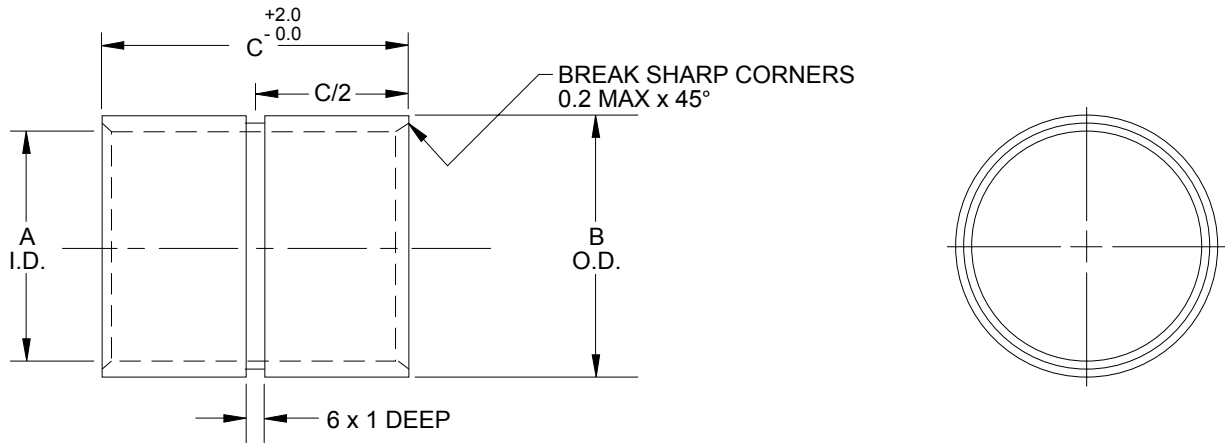
(L11 SERIES)

GLOBAL STANDARD COMPONENTS



Stamping

01/03/95



| NAAMS CODE | LIFT PIN DIA. | A I.D. | B O.D. | C | EQUIVALENT TUBE - INCHES | |
|---------------|---------------------|-----------|-----------|-----|-----------------------------|-----------|
| | | | | | O/S DIA. | WALL THK. |
| L115050 | 50 | 52 | 60 | 50 | 2-3/8 | .156 |
| L116380 | 63 | 65 | 73 | 80 | 2-7/8 | .156 |
| L118010 | 80 | 83 | 92 | 100 | 3-5/8 | .188 |

NOTES & SPECIFICATIONS:

Material, steel

EYE BOLT INSERTS

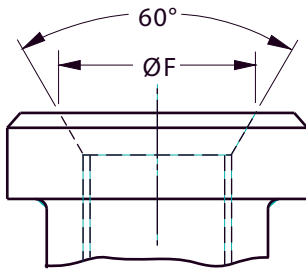
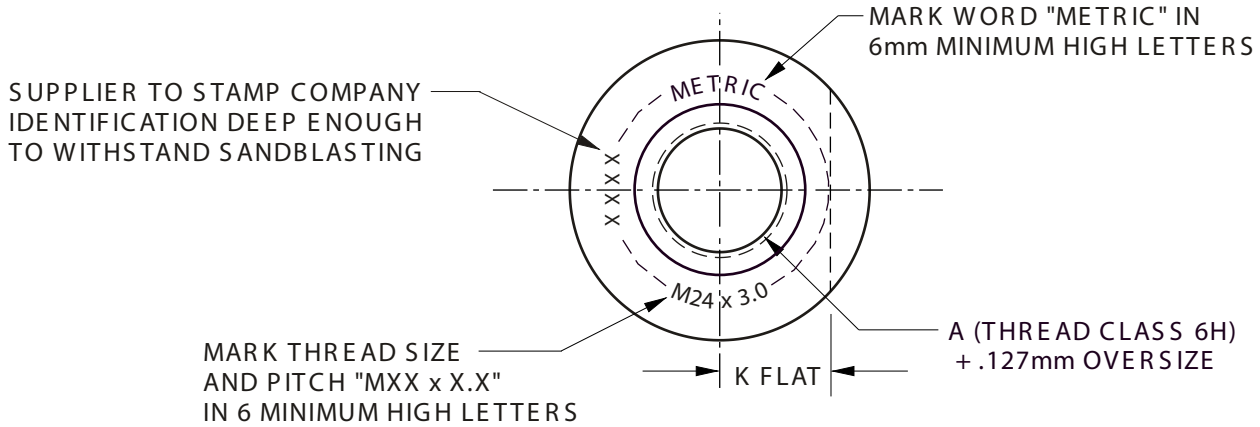
(L31 SERIES)

GLOBAL STANDARD COMPONENTS

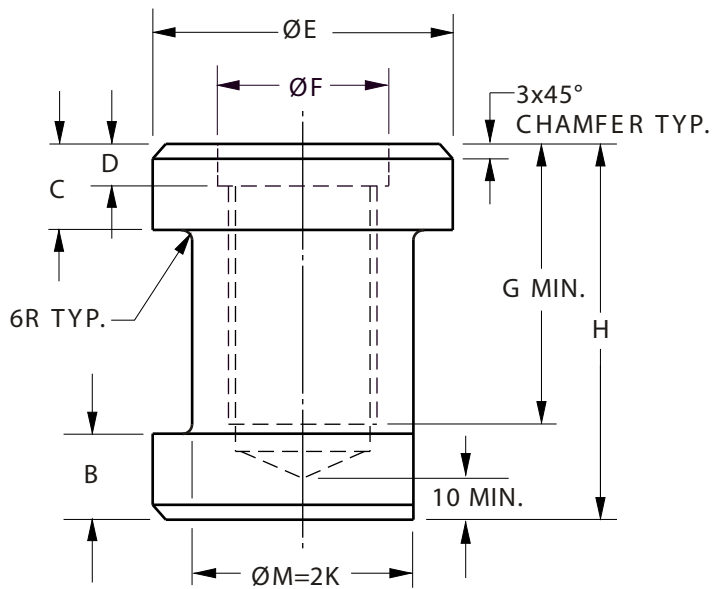


Stamping

06/03/10



FOR L314850
ONLY



| NAAMS CODE | A | B | C | D | ØE | ØF | G | H | ØM | K FLAT |
|------------|-----------|----|----|----|-----|----|-----|-----|----|--------|
| L311672 | M16 x 2.0 | 16 | 12 | 7 | 45 | 18 | 42 | 72 | 32 | 16 |
| L312080 | M20 x 2.5 | 16 | 12 | 8 | 50 | 22 | 50 | 80 | 36 | 18 |
| L312288 | M22 x 2.5 | 16 | 12 | 9 | 54 | 26 | 54 | 88 | 42 | 21 |
| L312488 | M24 x 3.0 | 16 | 12 | 9 | 54 | 26 | 54 | 88 | 42 | 21 |
| L313000 | M30 x 3.5 | 20 | 20 | 10 | 70 | 33 | 70 | 100 | 50 | 25 |
| L313612 | M36 x 4.0 | 22 | 22 | 10 | 80 | 39 | 82 | 112 | 60 | 30 |
| L314850 | M48 x 5.0 | 30 | 30 | - | 108 | 60 | 110 | 150 | 80 | 40 |

NOTES & SPECIFICATIONS:

Material: AISI-1144 Fatigue Proof or 4140 quenched & tempered to minimum tensile strength of 950 MPa and yield strength of 834 MPa and a hardness of 29-35 Rockwell "C".

NO SUBSTITUTIONS ALLOWED

LIFT PIN LINER

(L21 SERIES)

GLOBAL STANDARD COMPONENTS

NAAMS 

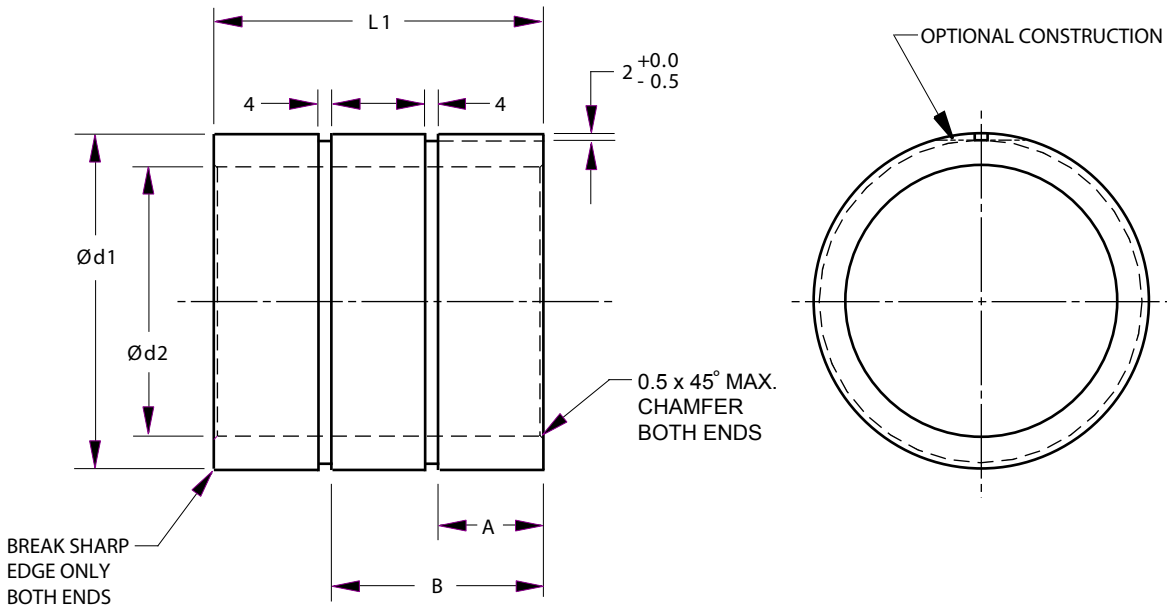
TM

Stamping

12/17/10

MATERIAL: ISO 2604/2 TS5 OR ISO 3305 STEEL TUBING

- Break all edges.
- Mark with NAAMS code and manufacturer's logo.
- Liner to be placed in pattern and alignment verified at foundry.
- Optional construction - 2 mm deep flat instead of 2 mm deep x 4 mm wide groove.



| NAAMS CODE | d1 +2/-0 | d2 +0.6/-0.0 | L 1 | A | B |
|-------------|-------------|-----------------|-----|----|----|
| L210032 | 44 | 34 | 40 | 18 | - |
| L210040 | 52 | 42 | 50 | 23 | - |
| L210050 | 62 | 52 | 60 | 28 | - |
| ** L210063A | 75 | 65 | 80 | 38 | - |
| * L210063B | 75 | 65 | 75 | 35 | - |
| L210080 | 100 | 82 | 100 | 32 | 64 |

* FOR GMNA ONLY
 ** NOT FOR GMNA USE