

SHIMS AND SPACERS COMPONENTS INDEX

| PAGE | DATE | NAAMS CODE | DESCRIPTION |
|-----------------------|----------|-------------------------|--|
| J-1 | 04/28/08 | | Shims and Spacers Components Index |
| J-1.1 | 08/24/07 | ASH1, ASH102 –ASH120 | Metric Fitting Shims 1-Slot |
| J-2 | 08/24/07 | ASH3, ASH302 –ASH320 | Metric Fitting Shims 3-Slot |
| J-3 | 08/24/07 | ASH4, ASH402 –ASH420 | Metric Fitting Shims 4-Slot |
| J-4 | 08/24/07 | ASP330–ASP370 | Metric Fitting Spacers 3-Hole |
| J-5 | 08/24/07 | ASP430–ASP470 | Metric Fitting Spacers 4-Hole |
| J-6 | 08/24/07 | ASP630–ASP670 | Metric Fitting Spacers 6-Hole |
| J-7 | 08/24/07 | ASP330S–ASP370S | Metric Fitting Spacers Short Slot (Small) |
| J-8 | 06/28/00 | Discontinued | Metric Fitting Spacers Long Slot (Small) |
| J-9 | 08/24/07 | ASP630S–ASP670S | Metric Fitting Spacers 2-Slot (Small) |
| J-10 | 08/24/07 | ACS330S–ACS370S | Construction Spacer 3-Slot |
| J-11 | 08/24/07 | ACS630–ACS670 | Spacer for 60 x 60 and 70 x 70 Mounting |
| J-12 | 08/24/07 | ASH6, ASH602 –ASH620 | Metric Fitting Shims 2-Slot |
| J-13 | 08/24/07 | ACH6, ACH602 –ACH620 | Construction Shims 2-Slot |
| J-14 | 08/24/07 | ASP530–ASP570 | Metric Fitting Spacers 5-Hole |
| J-15 | 08/24/07 | ASH5, ASH502 –ASH520 | Metric Fitting Shims 5-Slot |
| J-16 | 08/24/07 | ASH102N–ASH120N | Metric Fitting Shims 1-Slot (20 mm) |
| J-17 | 08/24/07 | ASH302N–ASH320N | Metric Fitting Shims 3-Slot (20 mm) |
| J-18 | 08/24/07 | ASH402N–ASH420N | Metric Fitting Shims 4-Slot (20 mm) |
| J-19 | 08/24/07 | ASP430S–ASP470S | Metric Fitting Spacers For 3-Hole (20 mm)* |
| J-20 | 04/28/08 | ASP430N–ASP470N | Metric Fitting Spacers 4-Hole (20 mm) |
| J-21 | 08/24/07 | ASP630N–ASP670N | Metric Fitting Spacers 6-Hole (20 mm) |
| J-22 | 08/24/07 | ASP230–ASP270 | Metric Fitting Spacers 2-Hole |
| J-23 | 08/24/07 | ASP730–ASP770 | Spacer for Shock Bracket 4-Hole |

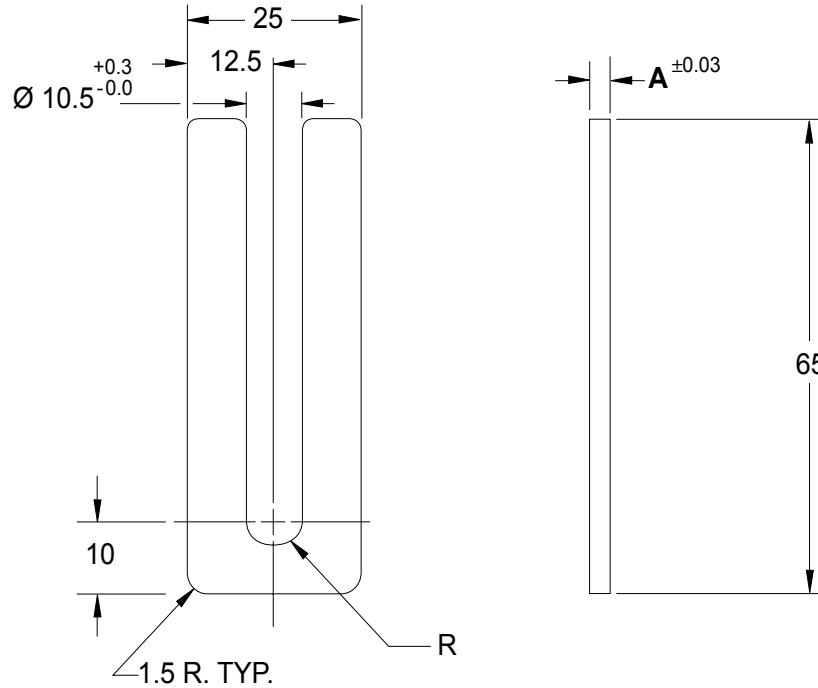
METRIC FITTING SHIMS 1 - SLOT

GLOBAL STANDARD COMPONENTS



Assembly

08/24/07



METRIC DIMENSIONAL TOLERANCES
UNLESS OTHERWISE SPECIFIED:

0 PLACE ± 0.5

1 PLACE ± 0.3

MATERIAL: S.A.E. 1010 CRS FULL HARD

SEE PAGE B-1.1 FOR GLOBAL MATERIALS CHART

| SHIM PACK ASH1 | |
|----------------|------------|
| QTY. | NAAMS CODE |
| 2 | ASH102 |
| 3 | ASH105 |
| 1 | ASH110 |
| 1 | ASH120 |

| NAAMS CODE | A | SURFACE |
|------------|------|------------------------|
| ASH102 | 0.25 | NONE |
| ASH105 | 0.50 | YELLOW ZINC DICHROMATE |
| ASH110 | 1.00 | BLACK OXIDE |
| ASH120 | 2.00 | NONE |

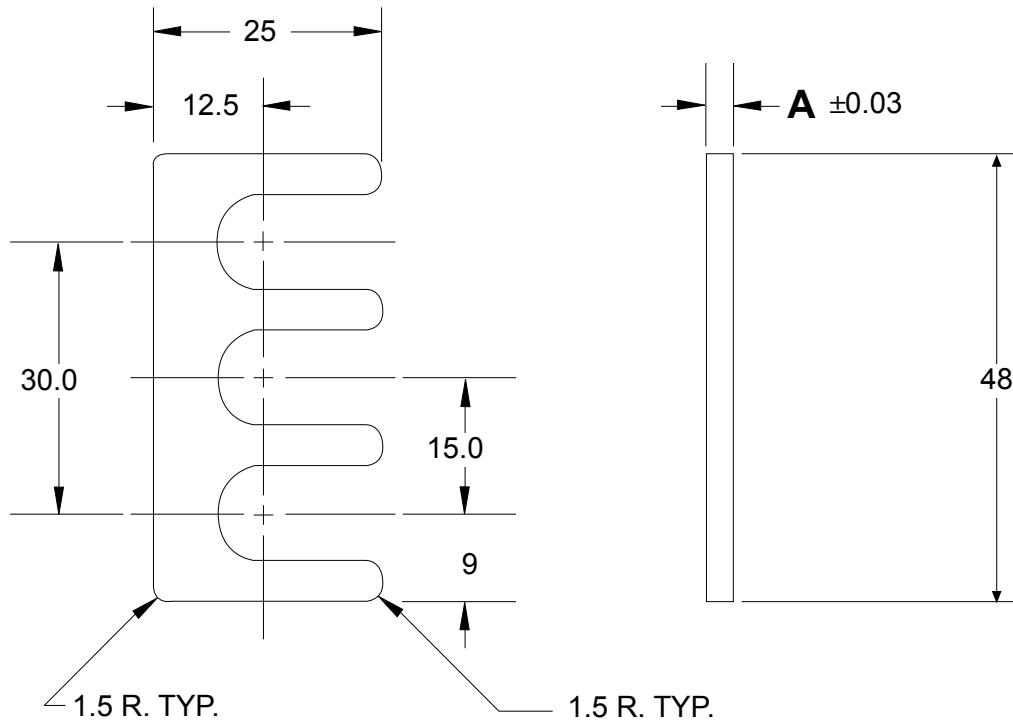
C

A

D

B

METRIC FITTING SHIMS 3-SLOT



NOTE:

- 1.) ALL SLOTS TO BE 10.5 ± 0.20
- 2.) ROUNDED ENDS OF ALL SLOTS TO BE TRUE RADIUS 1/2 OF WIDTH.
- 3.) ALL SLOT LOCATING DIMENSIONS TO BE ± 0.25
- 4.) MAT'L COLD ROLLED STRIP STEEL S.A.E. 1010 FULL HARD

METRIC DIMENSIONAL TOLERANCES

UNLESS OTHERWISE SPECIFIED:

0 PLACE: ± 0.5

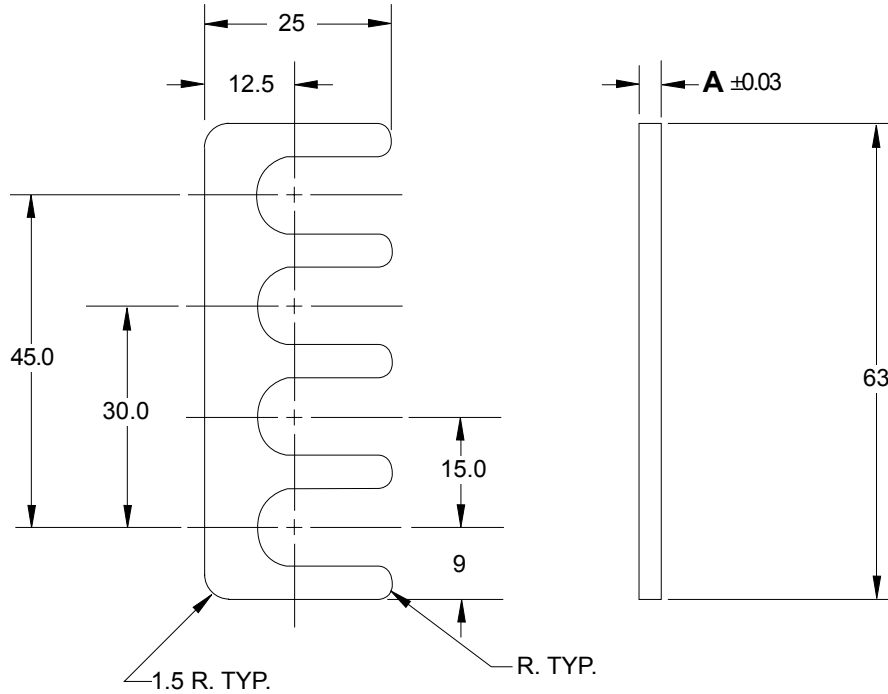
1 PLACE: ± 0.3

SEE PAGE B-1.1 FOR GLOBAL MATERIALS CHART

| SHIM PACK ASH3 | |
|----------------|------------|
| QTY. | NAAMS CODE |
| 2 | ASH302 |
| 3 | ASH305 |
| 1 | ASH310 |
| 1 | ASH320 |

| NAAMS CODE | A | SURFACE |
|------------|------|------------------------|
| ASH302 | 0.25 | NONE |
| ASH305 | 0.50 | YELLOW ZINC DICHROMATE |
| ASH310 | 1.00 | BLACK OXIDE |
| ASH320 | 2.00 | NONE |

METRIC FITTING SHIMS 4-SLOT



NOTE:

- 1.) ALL SLOTS TO BE 10.5 ± 0.20
- 2.) ROUNDED ENDS OF ALL SLOTS TO BE TRUE RADIUS 1/2 OF WIDTH.
- 3.) ALL SLOT LOCATING DIMENSIONS TO BE ± 0.25
- 4.) MAT'L COLD ROLLED STRIP STEEL S.A.E. 1010 FULL HARD

METRIC DIMENSIONAL TOLERANCES

UNLESS OTHERWISE SPECIFIED:

0 PLACE: ± 0.5

1 PLACE: ± 0.3

SEE PAGE B-1.1 FOR GLOBAL MATERIALS CHART

| SHIM PACK ASH4 | |
|----------------|------------|
| QTY. | NAAMS CODE |
| 2 | ASH402 |
| 3 | ASH405 |
| 1 | ASH410 |
| 1 | ASH420 |

| NAAMS CODE | A | SURFACE |
|------------|------|------------------------|
| ASH402 | 0.25 | NONE |
| ASH405 | 0.50 | YELLOW ZINC DICHROMATE |
| ASH410 | 1.00 | BLACK OXIDE |
| ASH420 | 2.00 | NONE |

METRIC FITTING SPACERS 3-HOLE

GLOBAL STANDARD COMPONENTS



Assembly

08/24/07

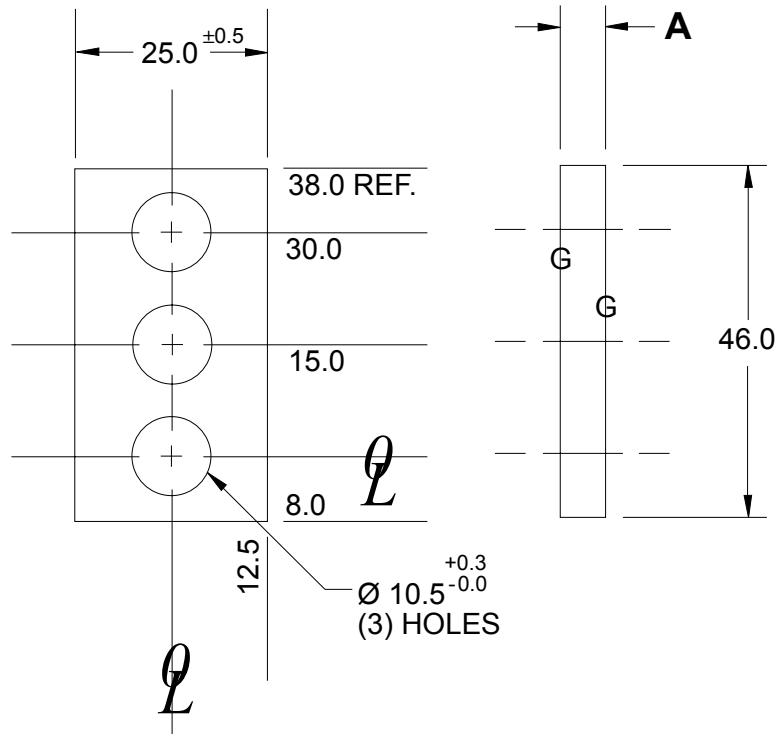
NOTE:

- 1.) ELECTROETCH DIM A ON EDGE OF SPACER
- 2.) ALL DIMENSIONS ARE METRIC
- 3.) BLACK OXIDE FINISH
- 4.) SURFACES TO BE FLAT AND PARALLEL TO WITHIN 0.015 mm T.I.R.
- 5.) METRIC TOLERANCES: UNLESS OTHERWISE SPECIFIED:

- 1 PLACE ± 0.3 mm
- 2 PLACE ± 0.03 mm

MATERIAL: S.A.E. 1020 HRS

SEE PAGE B-1.1 FOR GLOBAL MATERIALS CHART



B

A

| NAAMS CODE | A |
|------------|------|
| ASP330 | 3.00 |
| ASP332 | 3.20 |
| ASP334 | 3.40 |
| ASP336 | 3.60 |
| ASP338 | 3.80 |
| ASP340 | 4.00 |
| ASP342 | 4.20 |
| ASP344 | 4.40 |
| ASP346 | 4.60 |
| ASP348 | 4.80 |
| ASP350 | 5.00 |
| ASP352 | 5.20 |
| ASP354 | 5.40 |
| ASP356 | 5.60 |
| ASP358 | 5.80 |
| ASP360 | 6.00 |
| ASP362 | 6.20 |
| ASP364 | 6.40 |
| ASP366 | 6.60 |
| ASP368 | 6.80 |
| ASP370 | 7.00 |

METRIC FITTING SPACERS 4-HOLE

GLOBAL STANDARD COMPONENTS



Assembly

08/24/07

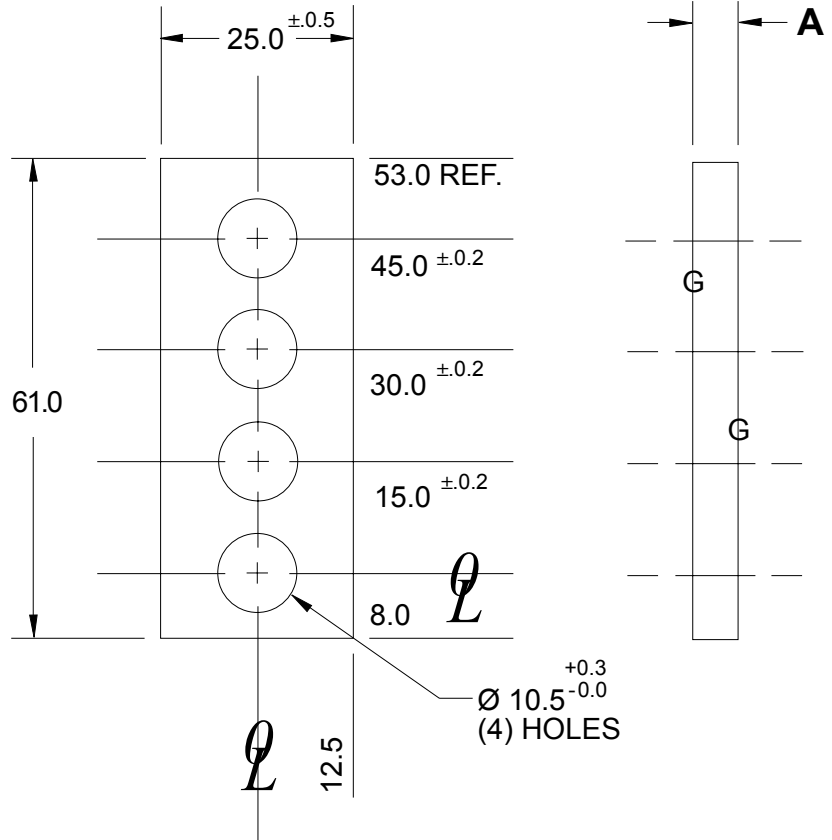
NOTE:

- 1.) ELECTROETCH DIM A ON EDGE OF SPACER
- 2.) ALL DIMENSIONS ARE METRIC
- 3.) BLACK OXIDE FINISH
- 4.) SURFACES TO BE FLAT AND PARALLEL TO WITHIN 0.015 mm T.I.R.
- 5.) METRIC TOLERANCES: UNLESS OTHERWISE SPECIFIED:

- 1 PLACE ± 0.3 mm
- 2 PLACE ± 0.03 mm

MATERIAL: S.A.E. 1020 HRS

SEE PAGE B-1.1 FOR GLOBAL MATERIALS CHART



| NAAMS CODE | A |
|------------|------|
| ASP430 | 3.00 |
| ASP432 | 3.20 |
| ASP434 | 3.40 |
| ASP436 | 3.60 |
| ASP438 | 3.80 |
| ASP440 | 4.00 |
| ASP442 | 4.20 |
| ASP444 | 4.40 |
| ASP446 | 4.60 |
| ASP448 | 4.80 |
| ASP450 | 5.00 |
| ASP452 | 5.20 |
| ASP454 | 5.40 |
| ASP456 | 5.60 |
| ASP458 | 5.80 |
| ASP460 | 6.00 |
| ASP462 | 6.20 |
| ASP464 | 6.40 |
| ASP466 | 6.60 |
| ASP468 | 6.80 |
| ASP470 | 7.00 |

B
C

A

METRIC FITTING SPACERS 6-HOLE

GLOBAL STANDARD COMPONENTS



Assembly

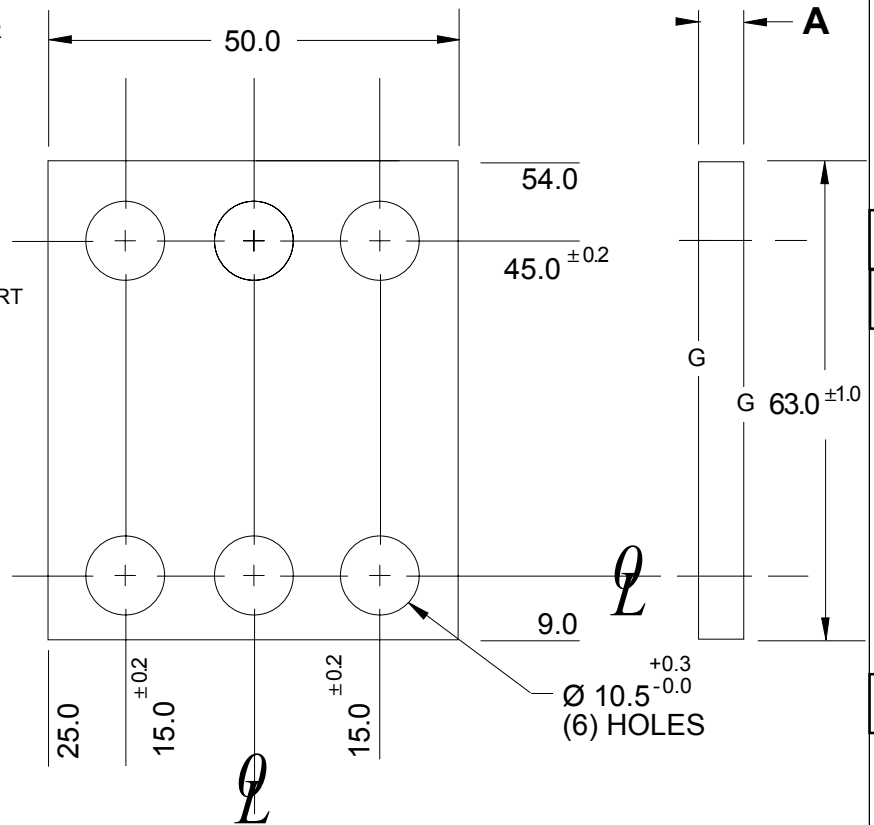
08/24/07

NOTE:

- 1.) ELECTROETCH DIM A ON EDGE OF SPACER
- 2.) ALL DIMENSIONS ARE METRIC
- 3.) BLACK OXIDE FINISH
- 4.) SURFACES TO BE FLAT AND PARALLEL TO WITHIN 0.015 T.I.R.
- 5.) METRIC TOLERANCES:
UNLESS OTHERWISE SPECIFIED:
1 PLACE ± 0.3
2 PLACE ± 0.03

MATERIAL: S.A.E. 1020 HRS

SEE PAGE B-1.1 FOR GLOBAL MATERIALS CHART



| NAAMS CODE | A |
|------------|------|
| ASP630 | 3.00 |
| ASP632 | 3.20 |
| ASP634 | 3.40 |
| ASP636 | 3.60 |
| ASP638 | 3.80 |
| ASP640 | 4.00 |
| ASP642 | 4.20 |
| ASP644 | 4.40 |
| ASP646 | 4.60 |
| ASP648 | 4.80 |
| ASP650 | 5.00 |
| ASP652 | 5.20 |
| ASP654 | 5.40 |
| ASP656 | 5.60 |
| ASP658 | 5.80 |
| ASP660 | 6.00 |
| ASP662 | 6.20 |
| ASP664 | 6.40 |
| ASP666 | 6.60 |
| ASP668 | 6.80 |
| ASP670 | 7.00 |

B
C

A

METRIC FITTING SPACERS SHORT SLOT (SMALL)

GLOBAL STANDARD COMPONENTS



Assembly

08/24/07

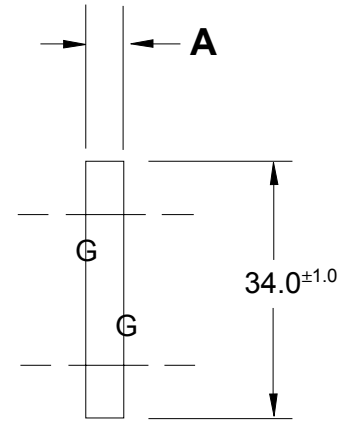
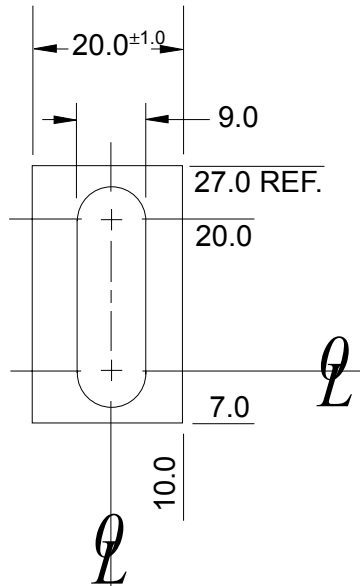
NOTE:

- 1.) ELECTROETCH DIM A ON EDGE OF SPACER
- 2.) ALL DIMENSIONS ARE METRIC
- 3.) BLACK OXIDE FINISH
- 4.) SURFACES TO BE FLAT AND PARALLEL TO WITHIN 0.015 mm T.I.R.
- 5.) METRIC TOLERANCES: UNLESS OTHERWISE SPECIFIED:

- 1 PLACE ± 0.3 mm
- 2 PLACE ± 0.03 mm

MATERIAL: S.A.E. 1020 HRS

SEE PAGE B-1.1 FOR GLOBAL MATERIALS CHART



A

| NAAMS CODE | A |
|------------|------|
| ASP330S | 3.00 |
| ASP332S | 3.20 |
| ASP334S | 3.40 |
| ASP336S | 3.60 |
| ASP338S | 3.80 |
| ASP340S | 4.00 |
| ASP342S | 4.20 |
| ASP344S | 4.40 |
| ASP346S | 4.60 |
| ASP348S | 4.80 |
| ASP350S | 5.00 |
| ASP352S | 5.20 |
| ASP354S | 5.40 |
| ASP356S | 5.60 |
| ASP358S | 5.80 |
| ASP360S | 6.00 |
| ASP362S | 6.20 |
| ASP364S | 6.40 |
| ASP366S | 6.60 |
| ASP368S | 6.80 |
| ASP370S | 7.00 |

**METRIC FITTING SPACERS
LONG SLOT (SMALL)**

A

**DISCONTINUED
See Page J-19**

METRIC FITTING SPACERS 2-SLOT (SMALL)

GLOBAL STANDARD COMPONENTS



Assembly

08/24/07

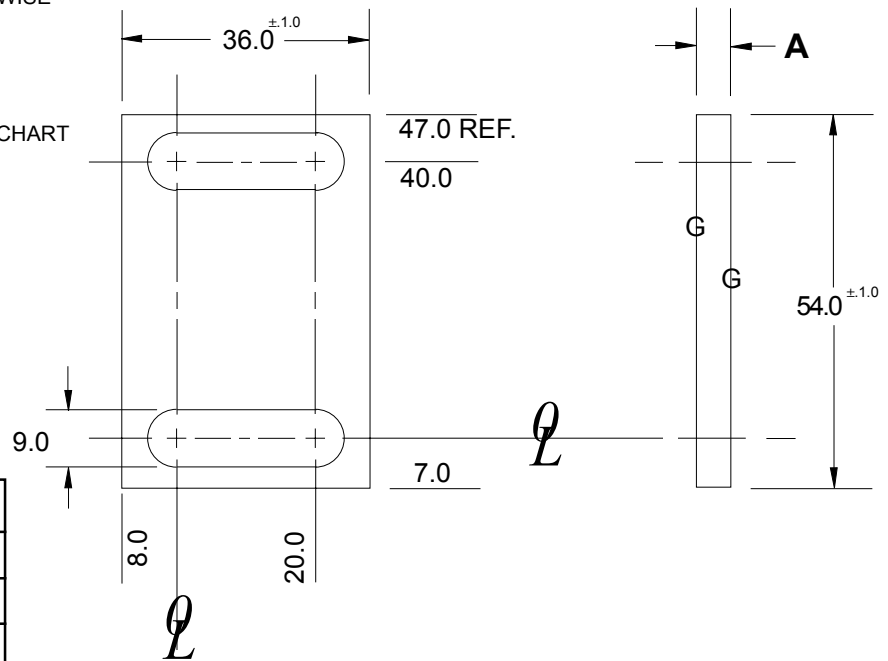
NOTE:

- 1.) ELECTROETCH DIM A ON EDGE OF SPACER
- 2.) ALL DIMENSIONS ARE METRIC
- 3.) BLACK OXIDE FINISH
- 4.) SURFACES TO BE FLAT AND PARALLEL TO WITHIN 0.015 mm T.I.R.
- 5.) METRIC TOLERANCES: UNLESS OTHERWISE SPECIFIED:

- 1 PLACE ± 0.3 mm
- 2 PLACE ± 0.03 mm

MATERIAL: S.A.E. 1020 HRS

SEE PAGE B-1.1 FOR GLOBAL MATERIALS CHART



| NAAMS CODE | A |
|------------|------|
| ASP630S | 3.00 |
| ASP632S | 3.20 |
| ASP634S | 3.40 |
| ASP636S | 3.60 |
| ASP638S | 3.80 |
| ASP640S | 4.00 |
| ASP642S | 4.20 |
| ASP644S | 4.40 |
| ASP646S | 4.60 |
| ASP648S | 4.80 |
| ASP650S | 5.00 |
| ASP652S | 5.20 |
| ASP654S | 5.40 |
| ASP656S | 5.60 |
| ASP658S | 5.80 |
| ASP660S | 6.00 |
| ASP662S | 6.20 |
| ASP664S | 6.40 |
| ASP666S | 6.60 |
| ASP668S | 6.80 |
| ASP670S | 7.00 |

CONSTRUCTION SPACER 3-SLOT

GLOBAL STANDARD COMPONENTS



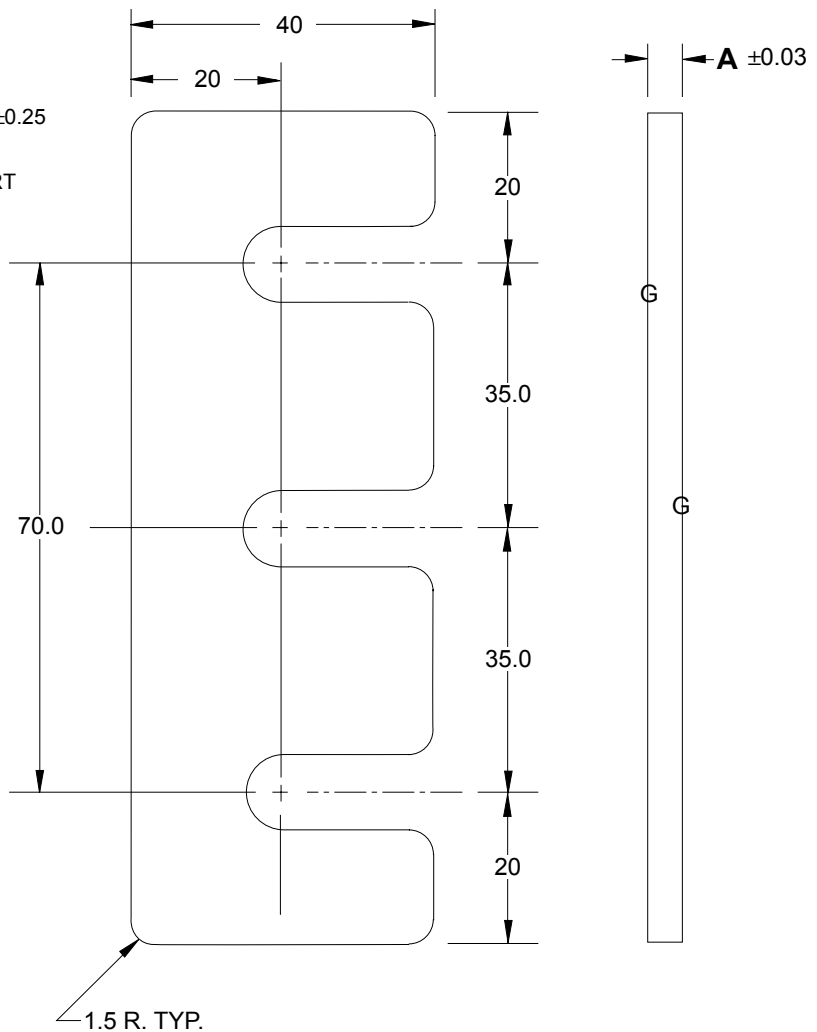
Assembly

08/24/07

C

NOTE:

- 1.) ELECTROETCH DIM A ON EDGE OF SPACER
 - 2.) BLACK OXIDE FINISH
 - 3.) SURFACES TO BE FLAT AND PARALLEL TO WITHIN 0.015 T.I.R.
 - 4.) METRIC TOLERANCES: UNLESS OTHERWISE SPECIFIED:
 0 PLACE ± 0.5
 1 PLACE ± 0.3
 - 5.) ALL SLOTS TO BE 10.50 ± 0.20
 - 6.) ALL SLOT LOCATING DIMENSIONS TO BE ± 0.25
- MATERIAL: S.A.E. 1020 HRS
 SEE PAGE B-1.1 FOR GLOBAL MATERIALS CHART



B

A

D

| NAAMS CODE | A |
|------------|------|
| ACS330S | 3.00 |
| ACS332S | 3.20 |
| ACS334S | 3.40 |
| ACS336S | 3.60 |
| ACS338S | 3.80 |
| ACS340S | 4.00 |
| ACS342S | 4.20 |

| NAAMS CODE | A |
|------------|------|
| ACS344S | 4.40 |
| ACS346S | 4.60 |
| ACS348S | 4.80 |
| ACS350S | 5.00 |
| ACS352S | 5.20 |
| ACS354S | 5.40 |
| ACS356S | 5.60 |

| NAAMS CODE | A |
|------------|------|
| ACS358S | 5.80 |
| ACS360S | 6.00 |
| ACS362S | 6.20 |
| ACS364S | 6.40 |
| ACS366S | 6.60 |
| ACS368S | 6.80 |
| ACS370S | 7.00 |

SPACER FOR 60 x 60 AND 70 x 70 MOUNTING

GLOBAL STANDARD COMPONENTS



Assembly

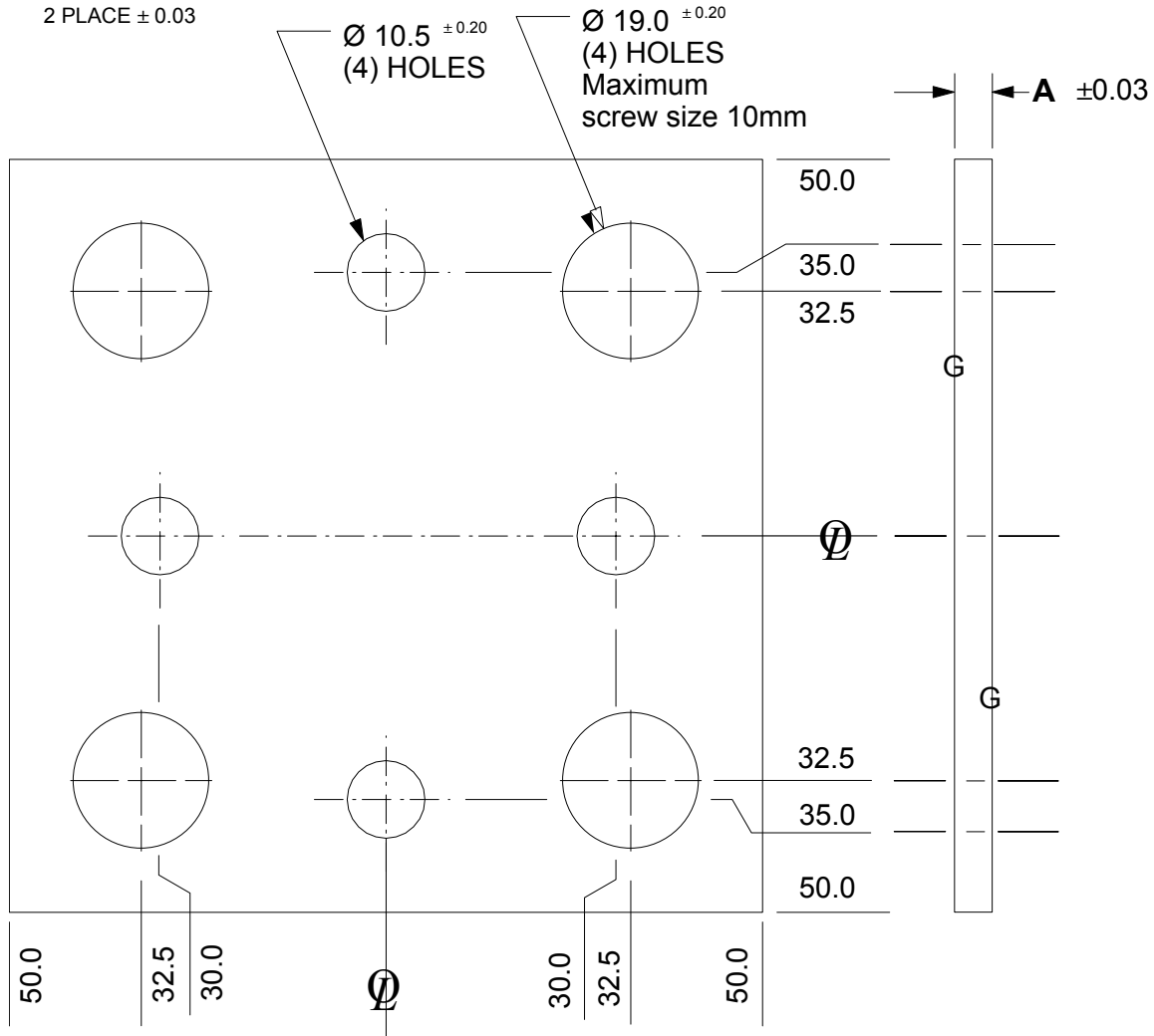
08/24/07

NOTE:

- 1.) ELECTROETCH DIM A ON EDGE OF SPACER
- 2.) BLACK OXIDE FINISH
- 3.) SURFACES TO BE FLAT AND PARALLEL TO WITHIN 0.015 T.I.R.
- 4.) METRIC TOLERANCES: UNLESS OTHERWISE SPECIFIED:

MATERIAL: S.A.E. 1020 HRS
SEE PAGE B-1.1 FOR GLOBAL MATERIALS CHART

- 1 PLACE ± 0.3
- 2 PLACE ± 0.03

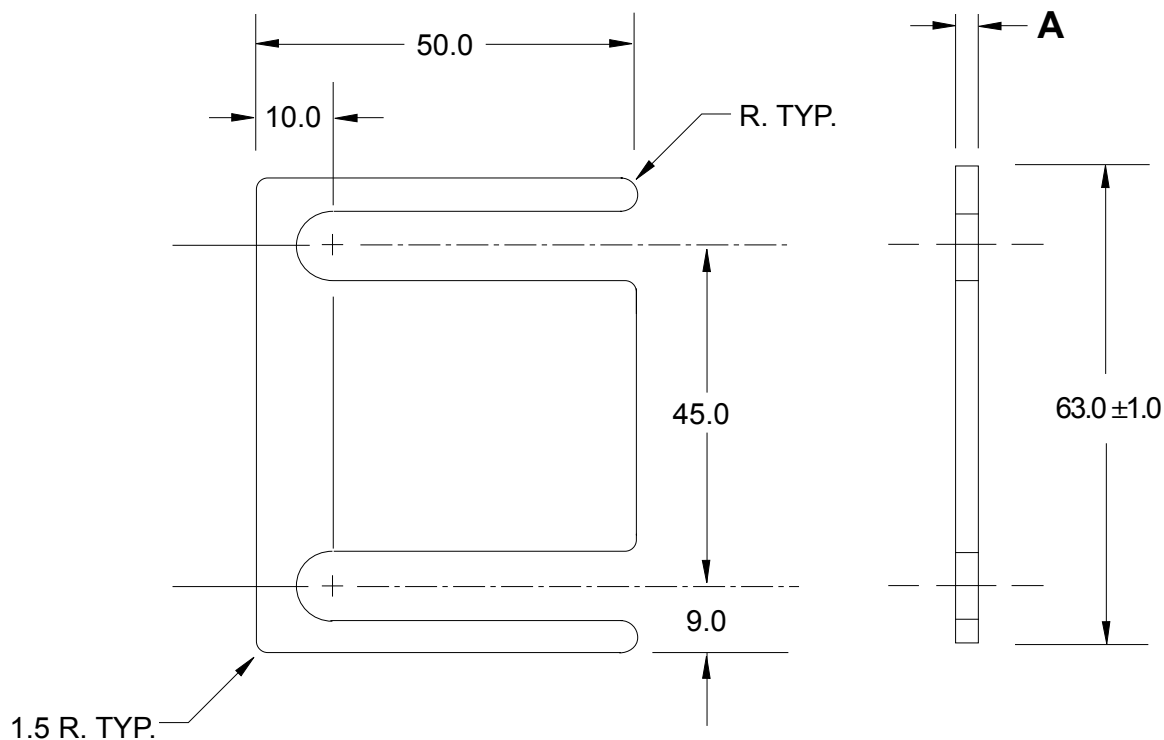


| NAAMS CODE | A |
|------------|------|
| ACS630 | 3.00 |
| ACS632 | 3.20 |
| ACS634 | 3.40 |
| ACS636 | 3.60 |
| ACS638 | 3.80 |
| ACS640 | 4.00 |
| ACS642 | 4.20 |

| NAAMS CODE | A |
|------------|------|
| ACS644 | 4.40 |
| ACS646 | 4.60 |
| ACS648 | 4.80 |
| ACS650 | 5.00 |
| ACS652 | 5.20 |
| ACS654 | 5.40 |
| ACS656 | 5.60 |

| NAAMS CODE | A |
|------------|------|
| ACS658 | 5.80 |
| ACS660 | 6.00 |
| ACS662 | 6.20 |
| ACS664 | 6.40 |
| ACS666 | 6.60 |
| ACS668 | 6.80 |
| ACS670 | 7.00 |

METRIC FITTING SHIMS 2-SLOT



NOTE:

- 1.) ALL SLOTS TO BE 10.5 ± 0.20
- 2.) ROUNDED ENDS OF ALL SLOTS TO BE TRUE RADIUS 1/2 OF WIDTH.
- 3.) ALL SLOT LOCATING DIMENSIONS TO BE ± 0.25
- 4.) MAT'L COLD ROLLED STRIP STEEL S.A.E. 1010 FULL HARD

METRIC DIMENSIONAL TOLERANCES

UNLESS OTHERWISE SPECIFIED:

1 PLACE: ± 0.3

2 PLACE: ± 0.03

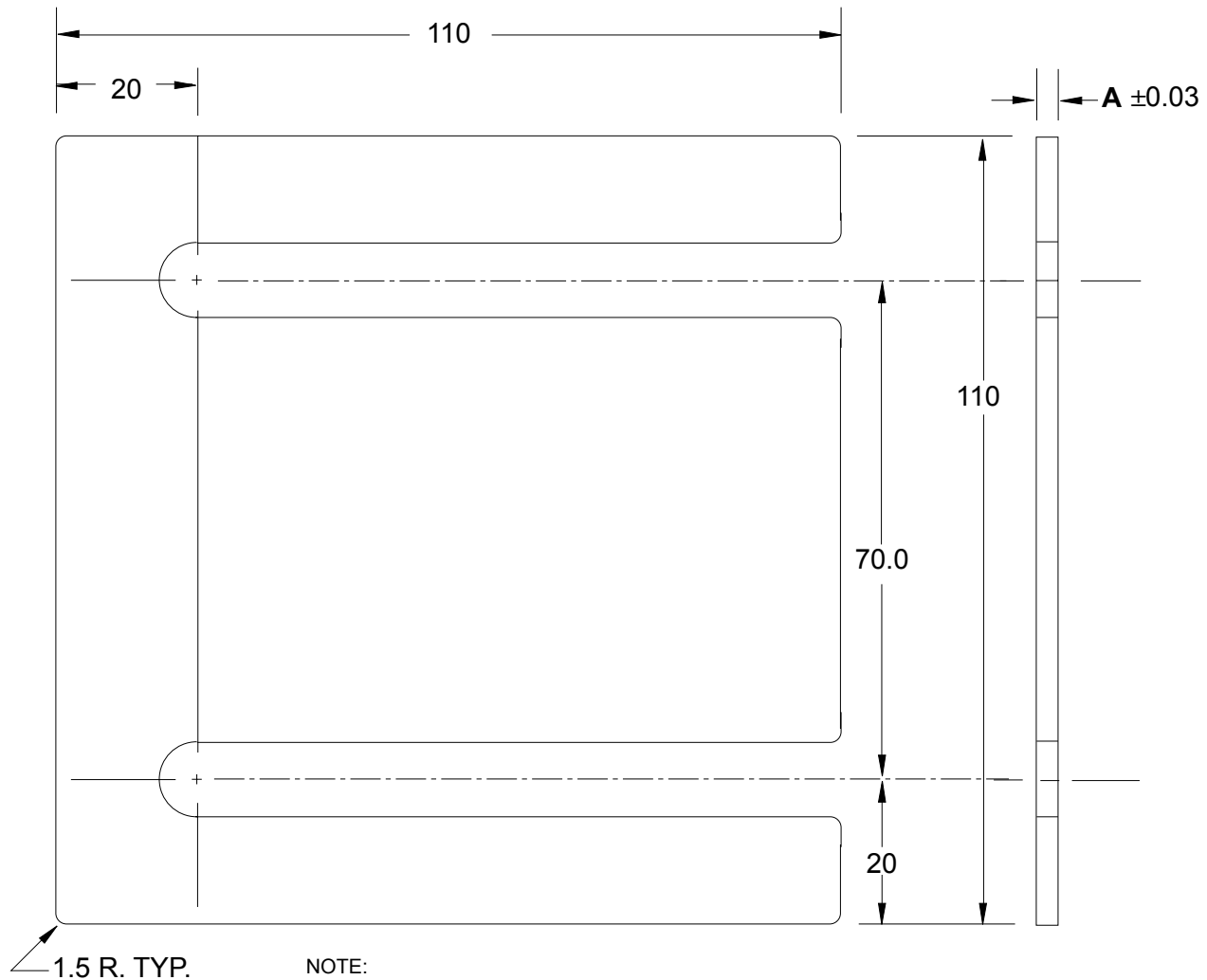
SEE PAGE B-1.1 FOR GLOBAL MATERIALS CHART

| SHIM PACK ASH6 | |
|----------------|------------|
| QTY. | NAAMS CODE |
| 2 | ASH602 |
| 3 | ASH605 |
| 1 | ASH610 |
| 1 | ASH620 |

| NAAMS CODE | A | SURFACE |
|------------|------|------------------------|
| ASH602 | 0.25 | NONE |
| ASH605 | 0.50 | YELLOW ZINC DICHROMATE |
| ASH610 | 1.00 | BLACK OXIDE |
| ASH620 | 2.00 | NONE |

A

CONSTRUCTION SHIM 2-SLOT



1.5 R. TYP.

NOTE:

- 1.) ALL SLOTS TO BE 10.5 ± 0.20
- 2.) ROUNDED ENDS OF ALL SLOTS TO BE TRUE RADIUS 1/2 OF WIDTH.
- 3.) ALL SLOT LOCATING DIMENSIONS TO BE ± 0.25
- 4.) MAT'L COLD ROLLED STRIP STEEL S.A.E. 1010 FULL HARD

METRIC DIMENSIONAL TOLERANCES

UNLESS OTHERWISE SPECIFIED:

0 PLACE: ± 0.5

1 PLACE: ± 0.3

SEE PAGE B-1.1 FOR GLOBAL MATERIALS CHART

| SHIM PACK ACH6 | |
|----------------|------------|
| QTY. | NAAMS CODE |
| 2 | ACH602 |
| 3 | ACH605 |
| 1 | ACH610 |
| 1 | ACH620 |

| NAAMS CODE | A | SURFACE |
|------------|------|------------------------|
| ACH602 | 0.25 | NONE |
| ACH605 | 0.50 | YELLOW ZINC DICHROMATE |
| ACH610 | 1.00 | BLACK OXIDE |
| ACH620 | 2.00 | NONE |

METRIC FITTING SPACERS 5-HOLE

GLOBAL STANDARD COMPONENTS



Assembly

08/24/07

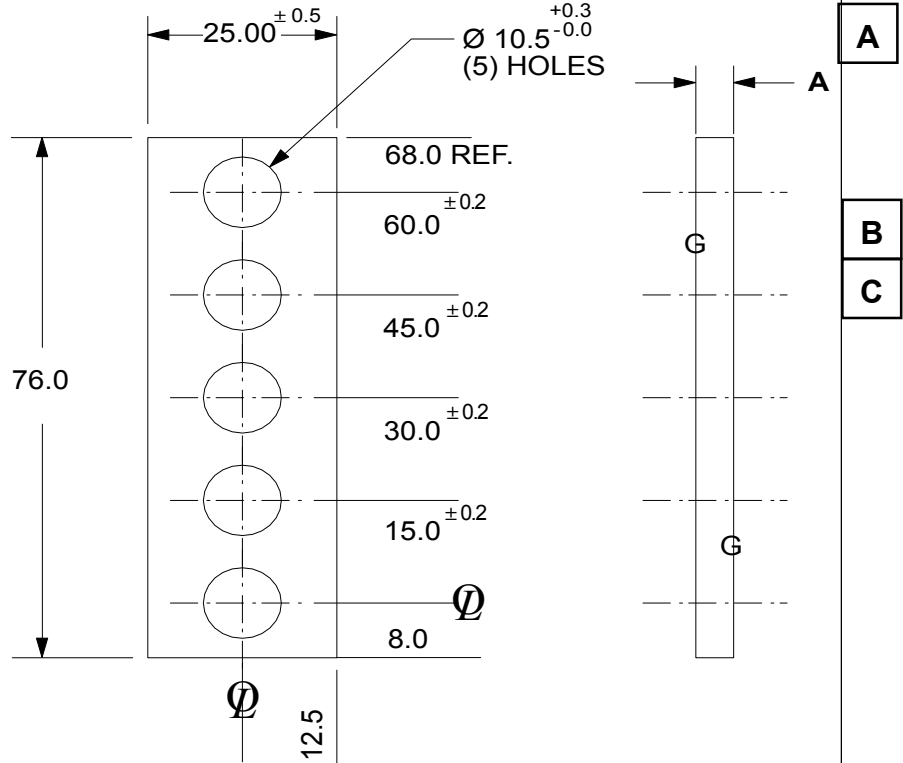
NOTE:

- 1.) ELECTROETCH DIM A ON EDGE OF SPACER
- 2.) ALL DIMENSIONS ARE METRIC
- 3.) BLACK OXIDE FINISH
- 4.) SURFACES TO BE FLAT AND PARALLEL TO WITHIN 0.015 mm T.I.R.
- 5.) METRIC TOLERANCES: UNLESS OTHERWISE SPECIFIED:

- 1 PLACE ± 0.3 mm
- 2 PLACE ± 0.03 mm

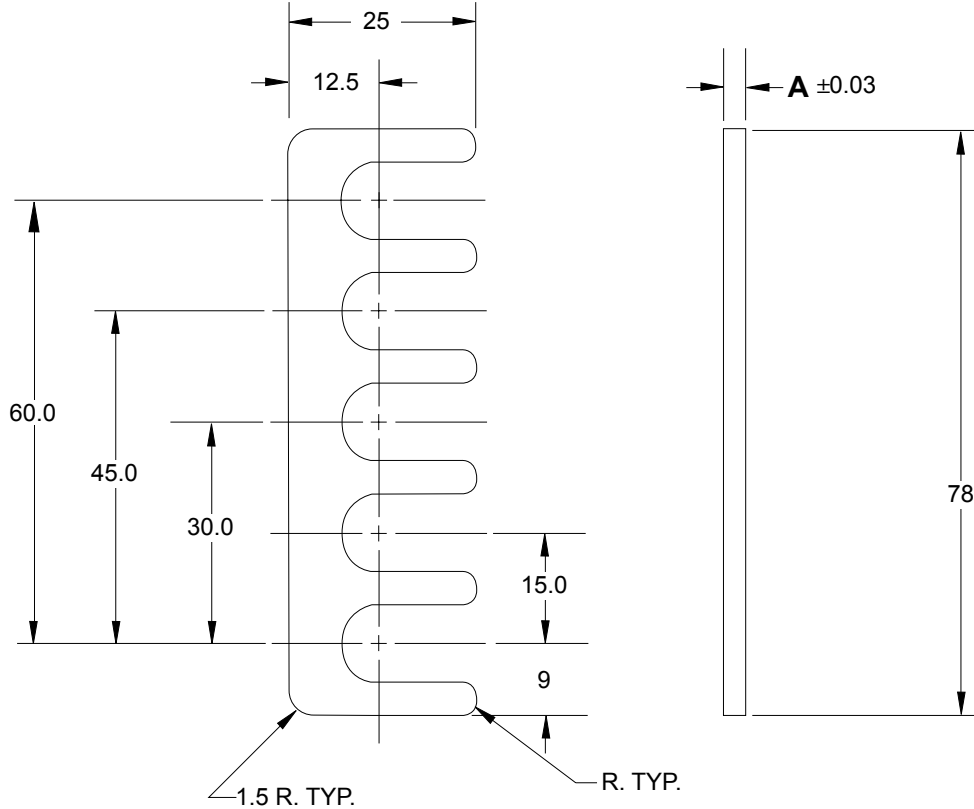
MATERIAL: S.A.E. 1020 HRS

SEE PAGE B-1.1 FOR GLOBAL MATERIALS CHART



| NAAMS CODE | A |
|------------|------|
| ASP530 | 3.00 |
| ASP532 | 3.20 |
| ASP534 | 3.40 |
| ASP536 | 3.60 |
| ASP538 | 3.80 |
| ASP540 | 4.00 |
| ASP542 | 4.20 |
| ASP544 | 4.40 |
| ASP546 | 4.60 |
| ASP548 | 4.80 |
| ASP550 | 5.00 |
| ASP552 | 5.20 |
| ASP554 | 5.40 |
| ASP556 | 5.60 |
| ASP558 | 5.80 |
| ASP560 | 6.00 |
| ASP562 | 6.20 |
| ASP564 | 6.40 |
| ASP566 | 6.60 |
| ASP568 | 6.80 |
| ASP570 | 7.00 |

METRIC FITTING SHIMS 5-SLOT



NOTE:

- 1.) ALL SLOTS TO BE 10.5 ± 0.20
- 2.) ROUNDED ENDS OF ALL SLOTS TO BE TRUE RADIUS 1/2 OF WIDTH.
- 3.) ALL SLOT LOCATING DIMENSIONS TO BE ± 0.25
- 4.) MAT'L COLD ROLLED STRIP STEEL S.A.E. 1010 FULL HARD

METRIC DIMENSIONAL TOLERANCES
UNLESS OTHERWISE SPECIFIED:

0 PLACE: ± 0.5
1 PLACE: ± 0.3

SEE PAGE B-1.1 FOR GLOBAL MATERIALS CHART

| SHIM PACK ASH5 | |
|----------------|------------|
| QTY. | NAAMS CODE |
| 2 | ASH502 |
| 3 | ASH505 |
| 1 | ASH510 |
| 1 | ASH520 |

| NAAMS CODE | A | SURFACE |
|------------|------|------------------------|
| ASH502 | 0.25 | NONE |
| ASH505 | 0.50 | YELLOW ZINC DICHROMATE |
| ASH510 | 1.00 | BLACK OXIDE |
| ASH520 | 2.00 | NONE |

B

A

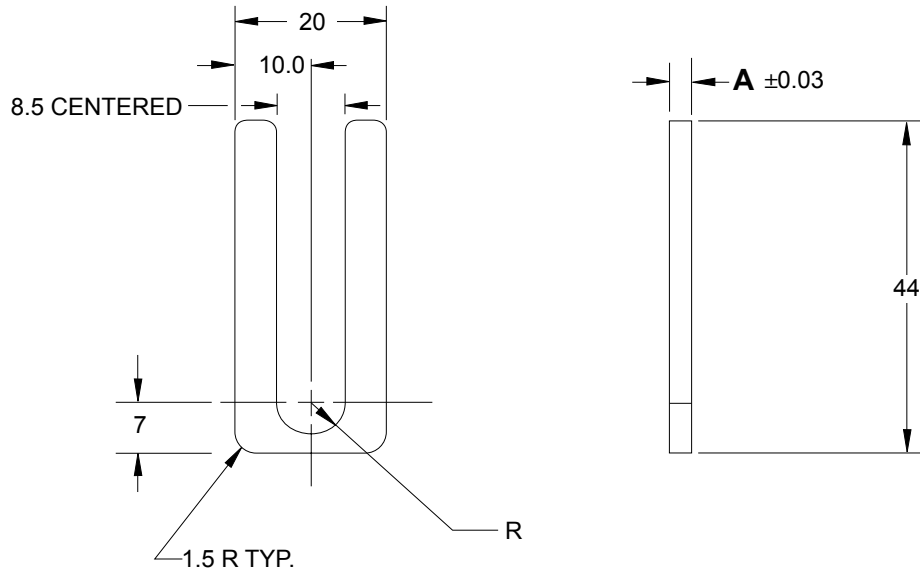
D

C

METRIC FITTING SHIMS

20 mm SERIES

1 - SLOT



METRIC DIMENSIONAL TOLERANCES
 UNLESS OTHERWISE SPECIFIED:

0 PLACE: ± 0.5

1 PLACE: ± 0.3

MATERIAL : COLD ROLLED STRIP STEEL S.A.E. 1010 FULL HARD
 SEE PAGE B-1.1 FOR GLOBAL MATERIALS CHART

| SHIM PACK ASH1N | |
|-----------------|------------|
| QTY. | NAAMS CODE |
| 2 | ASH102N |
| 3 | ASH105N |
| 1 | ASH110N |
| 1 | ASH120N |

| NAAMS CODE | A | SURFACE |
|------------|------|------------------------|
| ASH102N | 0.25 | NONE |
| ASH105N | 0.50 | YELLOW ZINC DICHROMATE |
| ASH110N | 1.00 | BLACK OXIDE |
| ASH120N | 2.00 | NONE |

B

A

METRIC FITTING SHIMS

20 mm SERIES

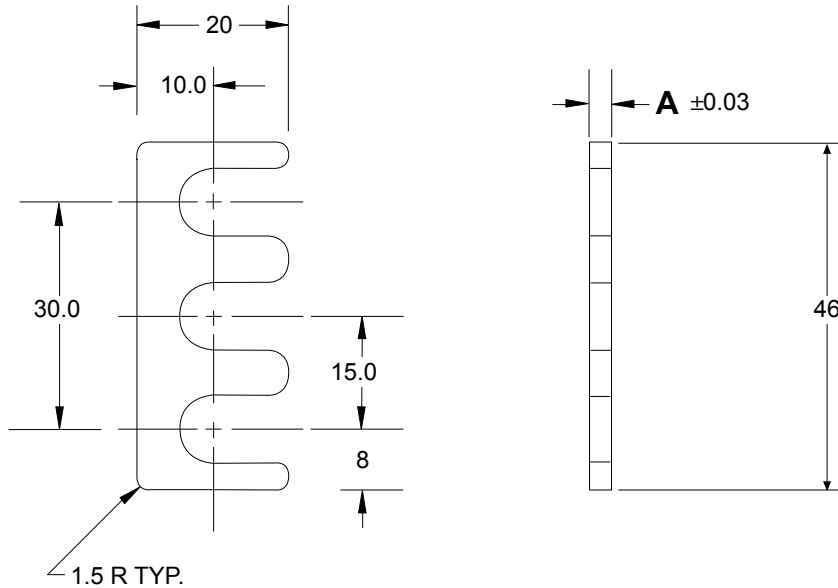
3 - SLOT

GLOBAL STANDARD COMPONENTS



Assembly

08/24/07



NOTE:

- 1.) ALL SLOTS TO BE 9.0 ± 0.20
- 2.) ROUNDED ENDS OF ALL SLOTS TO BE TRUE RADIUS 1/2 OF WIDTH.
- 3.) MAT'L COLD ROLLED STRIP STEEL S.A.E. 1010 FULL HARD

METRIC DIMENSIONAL TOLERANCES
UNLESS OTHERWISE SPECIFIED:

0 PLACE: ± 0.5

1 PLACE: ± 0.3

SEE PAGE B-1.1 FOR GLOBAL MATERIALS CHART

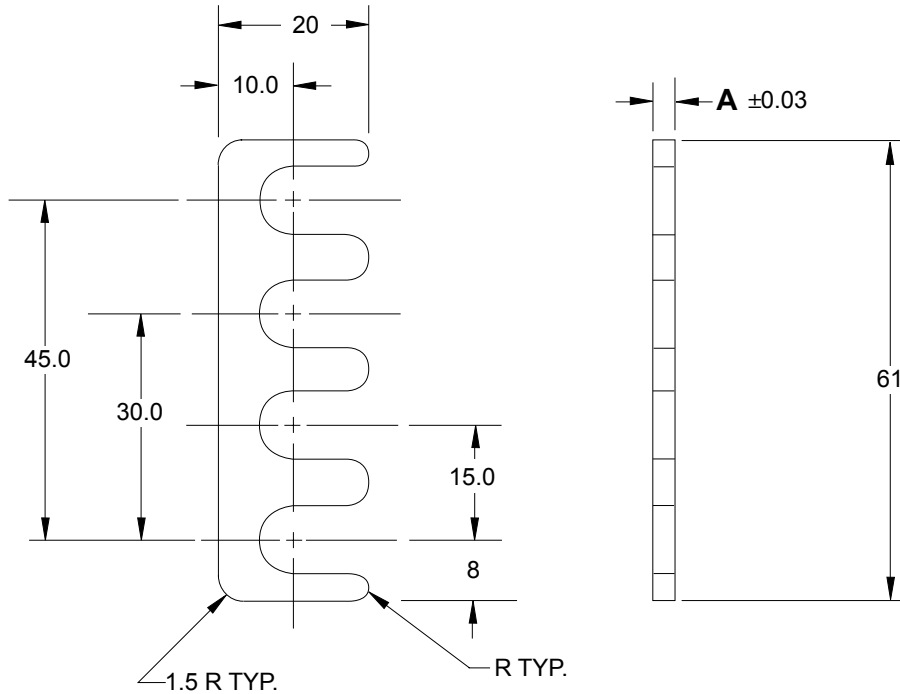
| SHIM PACK ASH3N | |
|-----------------|------------|
| QTY. | NAAMS CODE |
| 2 | ASH302N |
| 3 | ASH305N |
| 1 | ASH310N |
| 1 | ASH320N |

| NAAMS CODE | A | SURFACE |
|------------|------|------------------------|
| ASH302N | 0.25 | NONE |
| ASH305N | 0.50 | YELLOW ZINC DICHROMATE |
| ASH310N | 1.00 | BLACK OXIDE |
| ASH320N | 2.00 | NONE |

B

A

METRIC FITTING SHIMS 20 mm SERIES 4 - SLOT



NOTE:

- 1.) ALL SLOTS TO BE 9.0 ± 0.20
- 2.) ROUNDED ENDS OF ALL SLOTS TO BE TRUE RADIUS 1/2 OF WIDTH.
- 3.) MAT'L COLD ROLLED STRIP STEEL S.A.E. 1010 FULL HARD

METRIC DIMENSIONAL TOLERANCES
UNLESS OTHERWISE SPECIFIED:

0 PLACE: ± 0.5

1 PLACE: ± 0.3

SEE PAGE B-1.1 FOR GLOBAL MATERIALS CHART

| SHIM PACK ASH4N | |
|-----------------|------------|
| QTY. | NAAMS CODE |
| 2 | ASH402N |
| 3 | ASH405N |
| 1 | ASH410N |
| 1 | ASH420N |

| NAAMS CODE | A | SURFACE |
|------------|------|------------------------|
| ASH402N | 0.25 | NONE |
| ASH405N | 0.50 | YELLOW ZINC DICHROMATE |
| ASH410N | 1.00 | BLACK OXIDE |
| ASH420N | 2.00 | NONE |

B

A

METRIC FITTING SPACERS 20mm SERIES FOR 3-HOLE COMPONENTS

GLOBAL STANDARD COMPONENTS



Assembly

08/24/07

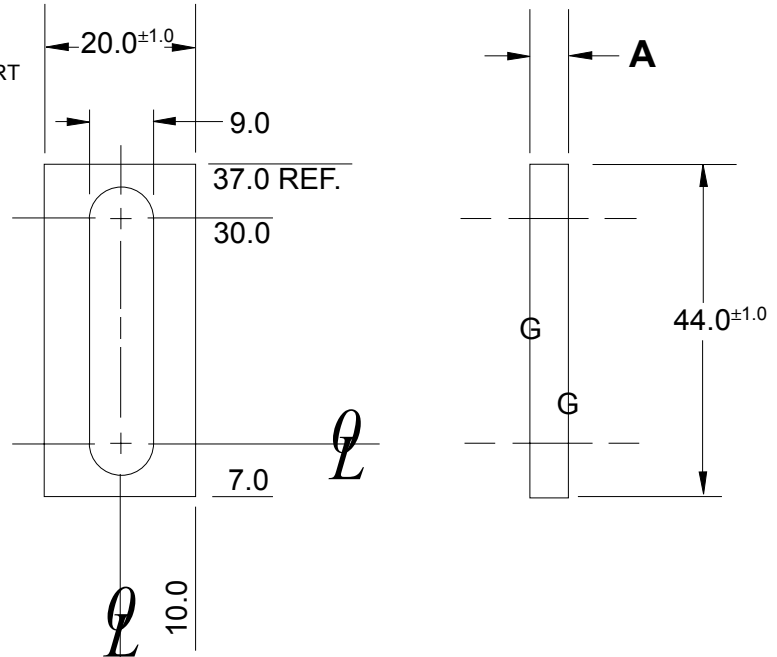
NOTE:

- 1.) ELECTROETCH DIM A ON EDGE OF SPACER
- 2.) ALL DIMENSIONS ARE METRIC
- 3.) BLACK OXIDE FINISH
- 4.) SURFACES TO BE FLAT AND PARALLEL TO WITHIN 0.015 T.I.R.
- 5.) TOLERANCES:

- 1 PLACE ± 0.3
- 2 PLACE ± 0.03

MATERIAL: S.A.E. 1020 HRS

SEE PAGE B-1.1 FOR GLOBAL MATERIALS CHART



A

| NAAMS CODE | A |
|------------|------|
| ASP430S | 3.00 |
| ASP432S | 3.20 |
| ASP434S | 3.40 |
| ASP436S | 3.60 |
| ASP438S | 3.80 |
| ASP440S | 4.00 |
| ASP442S | 4.20 |
| ASP444S | 4.40 |
| ASP446S | 4.60 |
| ASP448S | 4.80 |
| ASP450S | 5.00 |
| ASP452S | 5.20 |
| ASP454S | 5.40 |
| ASP456S | 5.60 |
| ASP458S | 5.80 |
| ASP460S | 6.00 |
| ASP462S | 6.20 |
| ASP464S | 6.40 |
| ASP466S | 6.60 |
| ASP468S | 6.80 |
| ASP470S | 7.00 |

METRIC FITTING SPACERS

20 mm SERIES

4 - HOLE

GLOBAL STANDARD COMPONENTS



Assembly

04/28/08

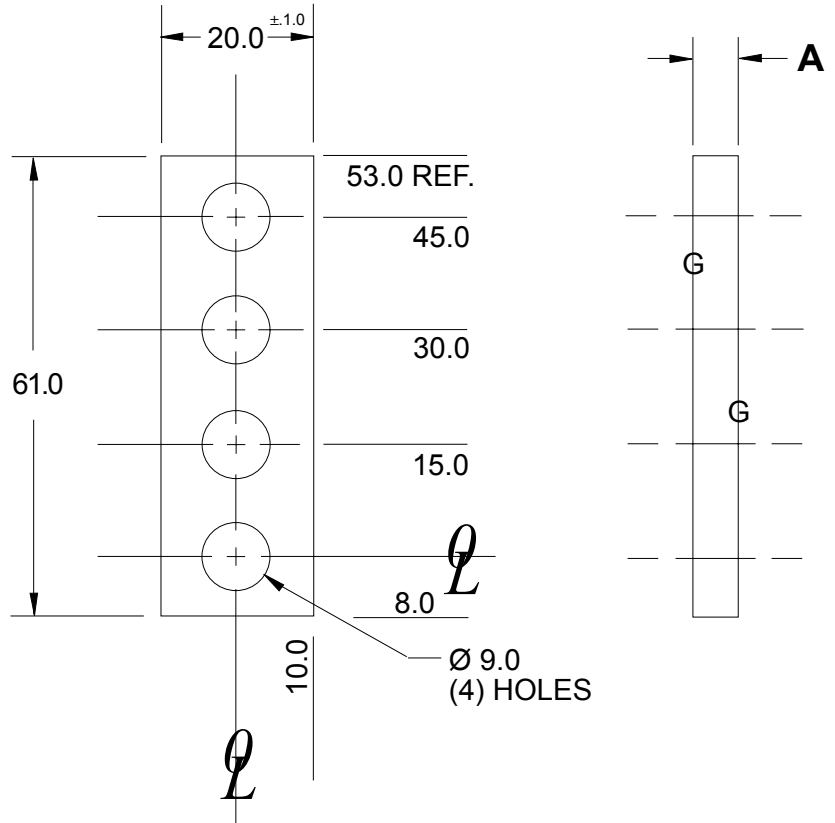
NOTE:

- 1.) ELECTROETCH DIM A ON EDGE OF SPACER
- 2.) BLACK OXIDE FINISH
- 3.) SURFACES TO BE FLAT AND PARALLEL TO WITHIN 0.015 mm T.I.R.
- 4.) MATERIAL: STEEL
- 5.) TOLERANCES:

- 1 PLACE ± 0.3
- 2 PLACE ± 0.03

MATERIAL: S.A.E. 1020 HRS

SEE PAGE B-1.1 FOR GLOBAL MATERIALS CHART



| NAAMS CODE | A |
|------------|------|
| ASP430N | 3.00 |
| ASP432N | 3.20 |
| ASP434N | 3.40 |
| ASP436N | 3.60 |
| ASP438N | 3.80 |
| ASP440N | 4.00 |
| ASP442N | 4.20 |
| ASP444N | 4.40 |
| ASP446N | 4.60 |
| ASP448N | 4.80 |
| ASP450N | 5.00 |
| ASP452N | 5.20 |
| ASP454N | 5.40 |
| ASP456N | 5.60 |
| ASP458N | 5.80 |
| ASP460N | 6.00 |
| ASP462N | 6.20 |
| ASP464N | 6.40 |
| ASP466N | 6.60 |
| ASP468N | 6.80 |
| ASP470N | 7.00 |

A

B

METRIC FITTING SPACERS

20 mm

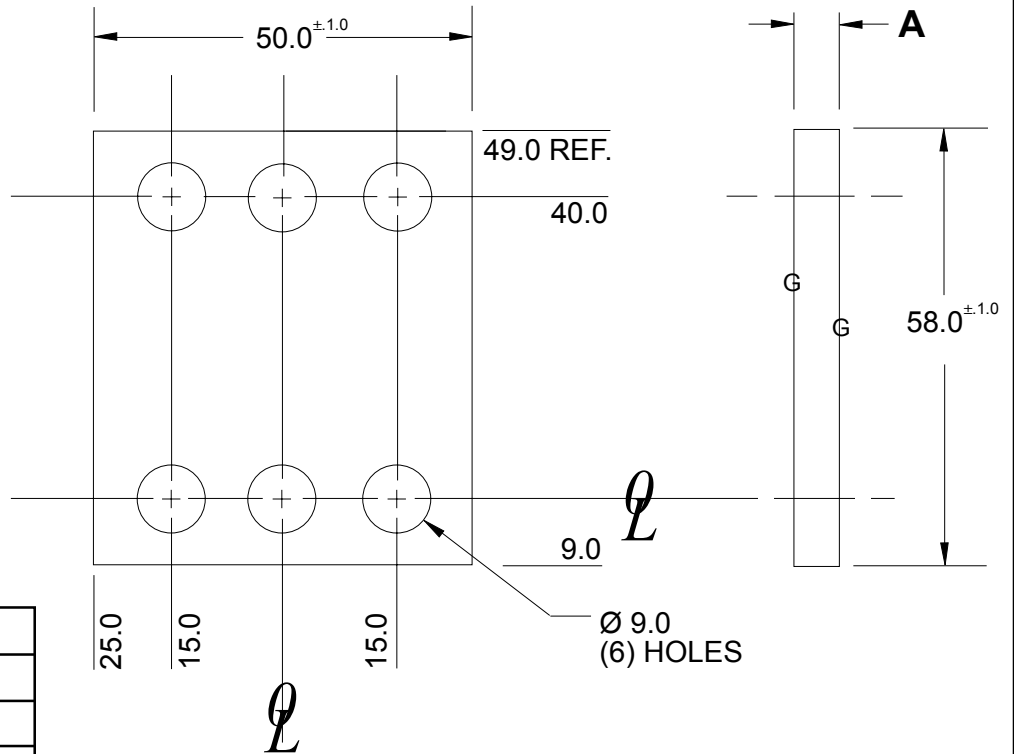
6 - HOLE

GLOBAL STANDARD COMPONENTS



Assembly

08/24/07



| NAAMS CODE | A |
|------------|------|
| ASP630N | 3.00 |
| ASP632N | 3.20 |
| ASP634N | 3.40 |
| ASP636N | 3.60 |
| ASP638N | 3.80 |
| ASP640N | 4.00 |
| ASP642N | 4.20 |
| ASP644N | 4.40 |
| ASP646N | 4.60 |
| ASP648N | 4.80 |
| ASP650N | 5.00 |
| ASP652N | 5.20 |
| ASP654N | 5.40 |
| ASP656N | 5.60 |
| ASP658N | 5.80 |
| ASP660N | 6.00 |
| ASP662N | 6.20 |
| ASP664N | 6.40 |
| ASP666N | 6.60 |
| ASP668N | 6.80 |
| ASP670N | 7.00 |

NOTE:

- 1.) ELECTROETCH DIM A ON EDGE OF SPACER
- 2.) BLACK OXIDE FINISH
- 3.) SURFACES TO BE FLAT AND PARALLEL TO WITHIN 0.015 mm T.I.R.

TOLERANCES:

- 1 PLACE ± 0.3
- 2 PLACE ± 0.03

MATERIAL: S.A.E. 1020 HRS

SEE PAGE B-1.1 FOR GLOBAL MATERIALS CHART

A

METRIC FITTING SPACER - 2 HOLE

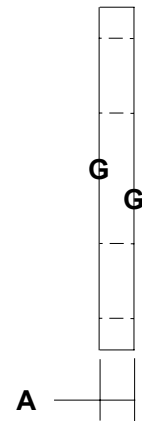
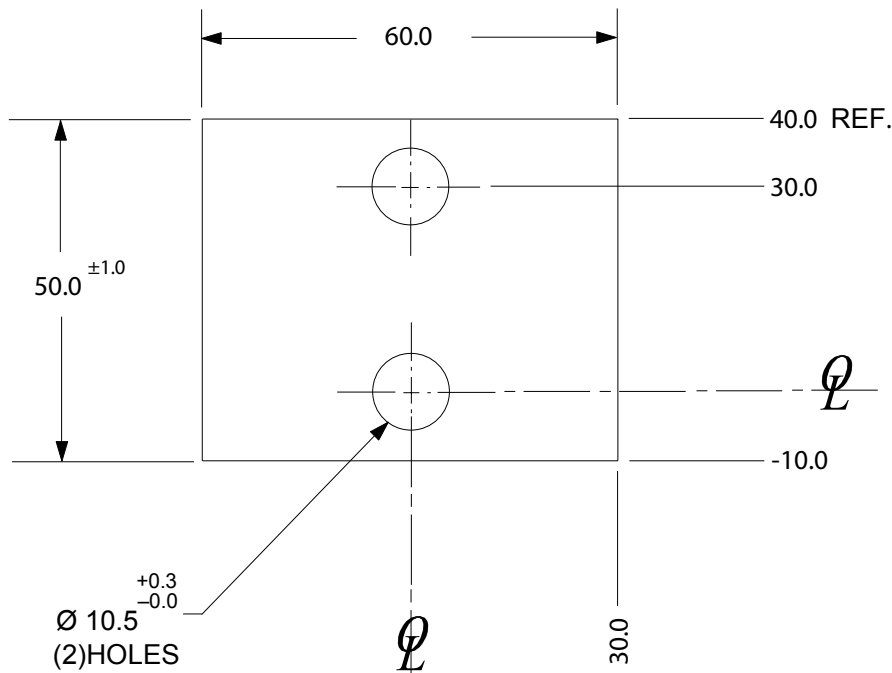
NOTE:

- 1) ELECTROETCH DIM A ON EDGE OF SPACER
- 2) ALL DIMENSIONS ARE METRIC
- 3) BLACK OXIDE FINISH
- 4) SURFACE TO BE FLAT AND PARALLEL TO WITHIN 0.015 T.I.R.
- 5) METRIC TOLERANCES: UNLESS OTHERWISE SPECIFIED
 - 1 PLACE $\pm 0.3\text{mm}$
 - 2 PLACE $\pm 0.03\text{mm}$

BLACK OXIDE

MATERIAL: S.A.E. 1020 HRS
SEE PAGE B-1.1 FOR GLOBAL MATERIALS CHART

A



| NAAMS CODE | A |
|------------|------|
| ASP230 | 3.00 |
| ASP232 | 3.20 |
| ASP234 | 3.40 |
| ASP236 | 3.60 |
| ASP238 | 3.80 |
| ASP240 | 4.00 |
| ASP242 | 4.20 |
| ASP244 | 4.40 |
| ASP246 | 4.60 |
| ASP248 | 4.80 |
| ASP250 | 5.00 |
| ASP252 | 5.20 |
| ASP254 | 5.40 |
| ASP256 | 5.60 |
| ASP258 | 5.80 |
| ASP260 | 6.00 |
| ASP262 | 6.20 |
| ASP264 | 6.40 |
| ASP266 | 6.60 |
| ASP268 | 6.80 |
| ASP270 | 7.00 |

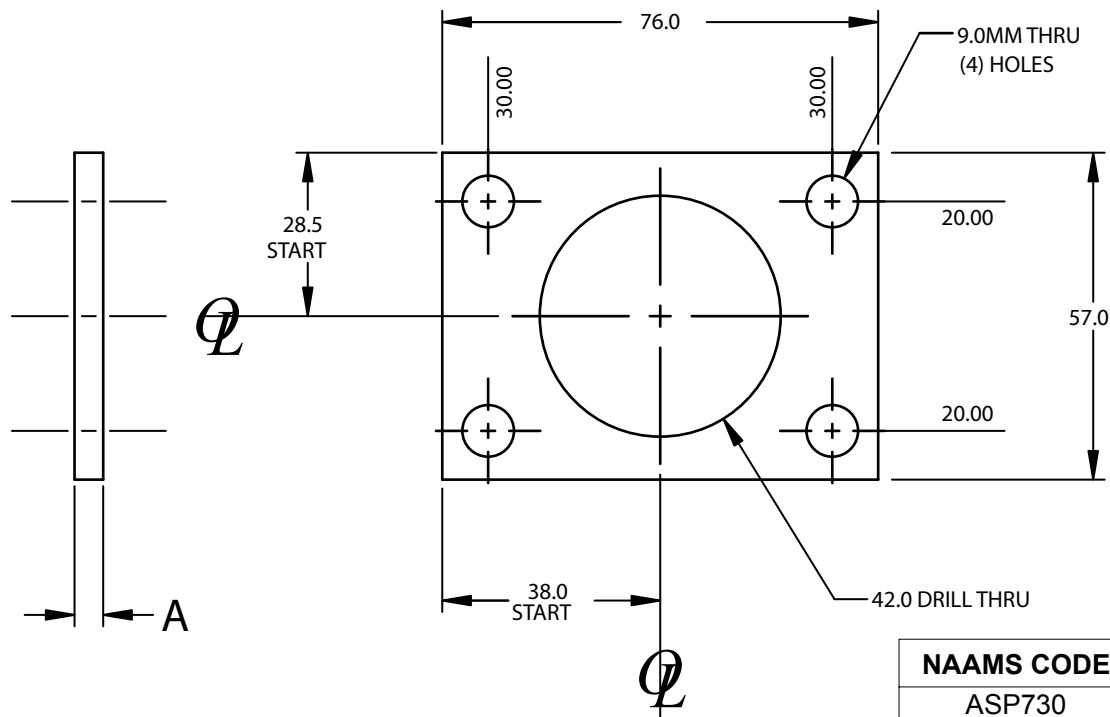
SPACER FOR SHOCK BRACKET

NOTE:

ELECTROETCH DIM A ON EDGE OF SPACER
 BLACK OXIDE FINISH
 SURFACE TO BE FLAT AND PARALLEL TO WITHIN 0.015 T.I.R.
 METRIC TOLERANCES: UNLESS OTHERWISE SPECIFIED
 1 PLACE $\pm 0.3\text{mm}$
 2 PLACE $\pm 0.03\text{mm}$

MATERIAL: S.A.E. 1020 HRS
 SEE PAGE B-1.1 FOR GLOBAL MATERIALS CHART

A



| NAAMS CODE | A |
|------------|------|
| ASP730 | 3.00 |
| ASP732 | 3.20 |
| ASP734 | 3.40 |
| ASP736 | 3.60 |
| ASP738 | 3.80 |
| ASP740 | 4.00 |
| ASP742 | 4.20 |
| ASP744 | 4.40 |
| ASP746 | 4.60 |
| ASP748 | 4.80 |
| ASP750 | 5.00 |
| ASP752 | 5.20 |
| ASP754 | 5.40 |
| ASP756 | 5.60 |
| ASP758 | 5.80 |
| ASP760 | 6.00 |
| ASP762 | 6.20 |
| ASP764 | 6.40 |
| ASP766 | 6.60 |
| ASP768 | 6.80 |
| ASP770 | 7.00 |