

LIFT COMPONENTS INDEX

PAGE	DATE	SERIES	DESCRIPTION
L-1	08/01/11		Lift Components Index
L-2	04/27/01	L01	Die Lift Pin With Spring Retainer Ring
L-3	01/03/95	L11	Casting Liner For Die Lift Pin
L-4	04/10/15	L31	Eye Bolt Insert
L-5	08/01/11	L21	Lift Pin Liner
L-6	04/10/15	L41	Eye Bolt Insert - Double Ended

DIE LIFT PIN WITH SPRING RETAINER RING

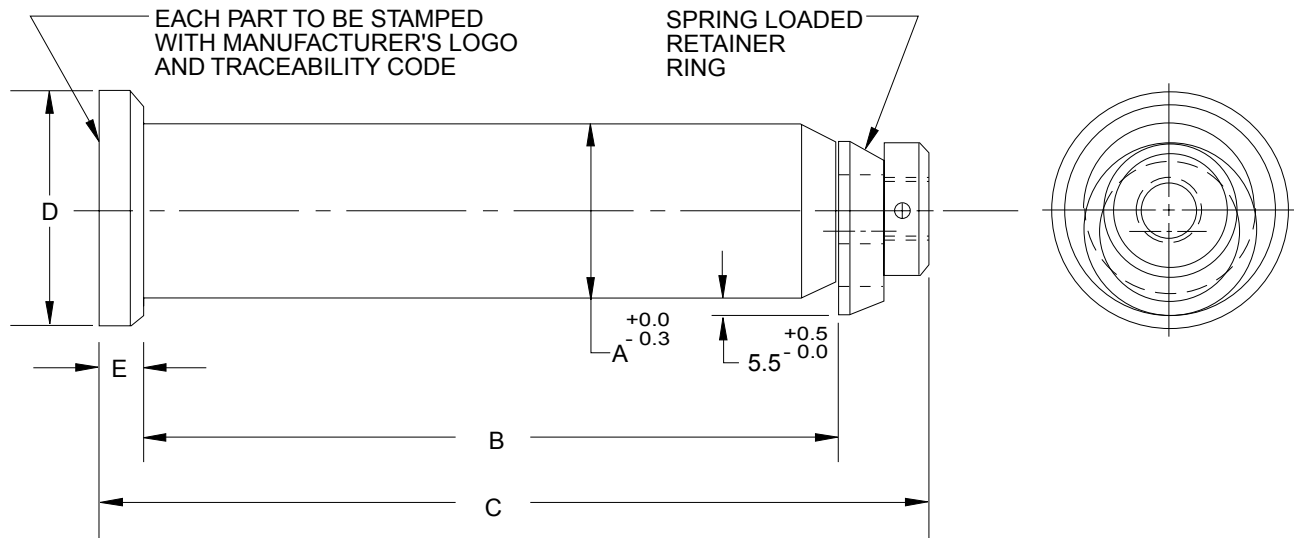
(L01 SERIES)

GLOBAL STANDARD COMPONENTS



Stamping

04/27/01



NAAMS CODE	A DIA.	B	C	D	E
L013512	35	125	165	45	10
L015019	50	190	230	63	10
L016328	63	280	320	76	10
L018032	80	320	370	89	15

NOTES & SPECIFICATIONS:

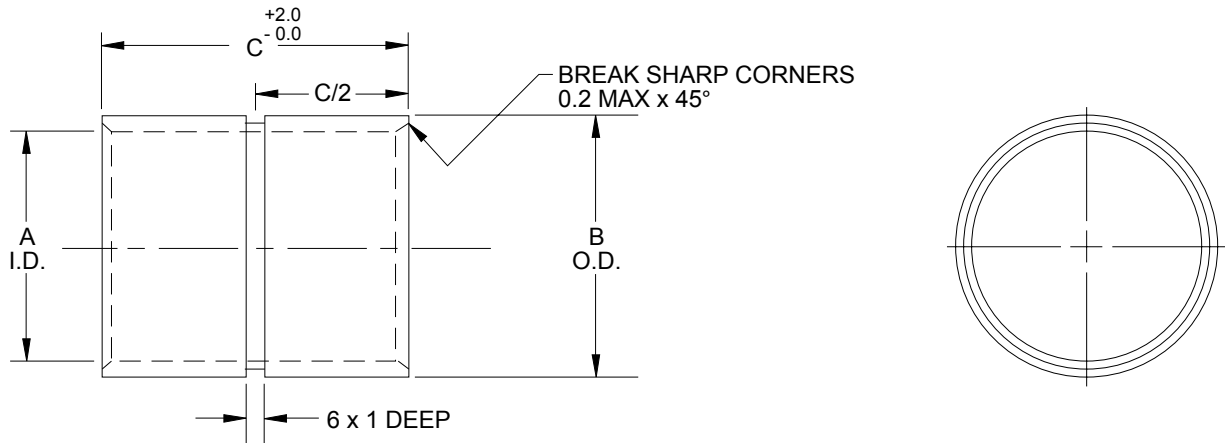
Material, steel

Tensile strength 965 MPa (140 ksi)

Yield strength 860 MPa (125 ksi)

CASTING LINER FOR DIE LIFT PIN

(L11 SERIES)



NAAMS CODE	LIFT PIN DIA.	A I.D.	B O.D.	C	EQUIVALENT TUBE - INCHES	
					O/S DIA.	WALL THK.
L115050	50	52	60	50	2-3/8	.156
L116380	63	65	73	80	2-7/8	.156
L118010	80	83	92	100	3-5/8	.188

NOTES & SPECIFICATIONS:

Material, steel

EYE BOLT INSERT

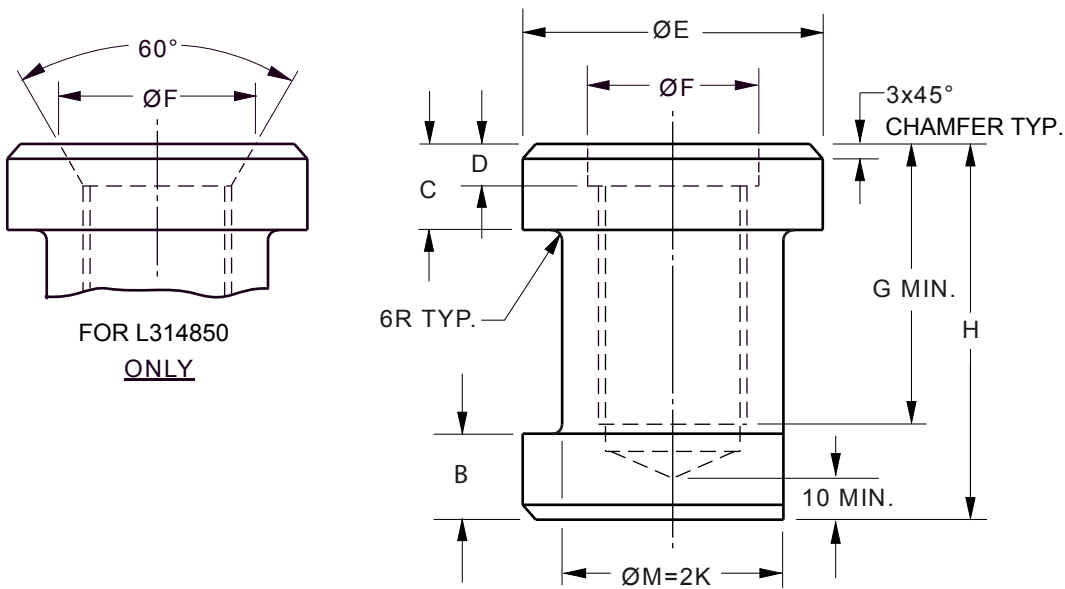
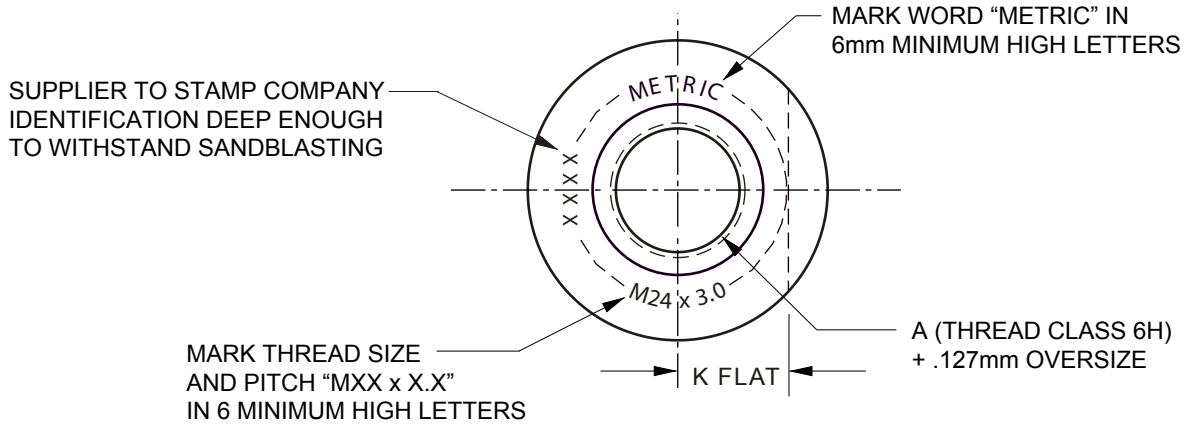
(L31 SERIES)

GLOBAL STANDARD COMPONENTS



Stamping

04/10/15



NAAMS CODE	A	B	C	D	ØE	ØF	G	H	ØM	K FLAT
L311672	M16 x 2.0	16	12	7	45	18	42	72	32	16
L312080	M20 x 2.5	16	12	8	50	22	50	80	36	18
L312288	M22 x 2.5	16	12	9	54	26	54	88	42	21
L312488	M24 x 3.0	16	12	9	54	26	54	88	42	21
L313000	M30 x 3.5	20	20	10	70	33	70	100	50	25
L313612	M36 x 4.0	22	22	10	80	39	82	112	60	30
L314850	M48 x 5.0	30	30	-	108	60	110	150	80	40

NOTES & SPECIFICATIONS:

STEEL, ISO 683/1 - C18 Minimum
Break all Edges

A

C

B

E

D

LIFT PIN LINER

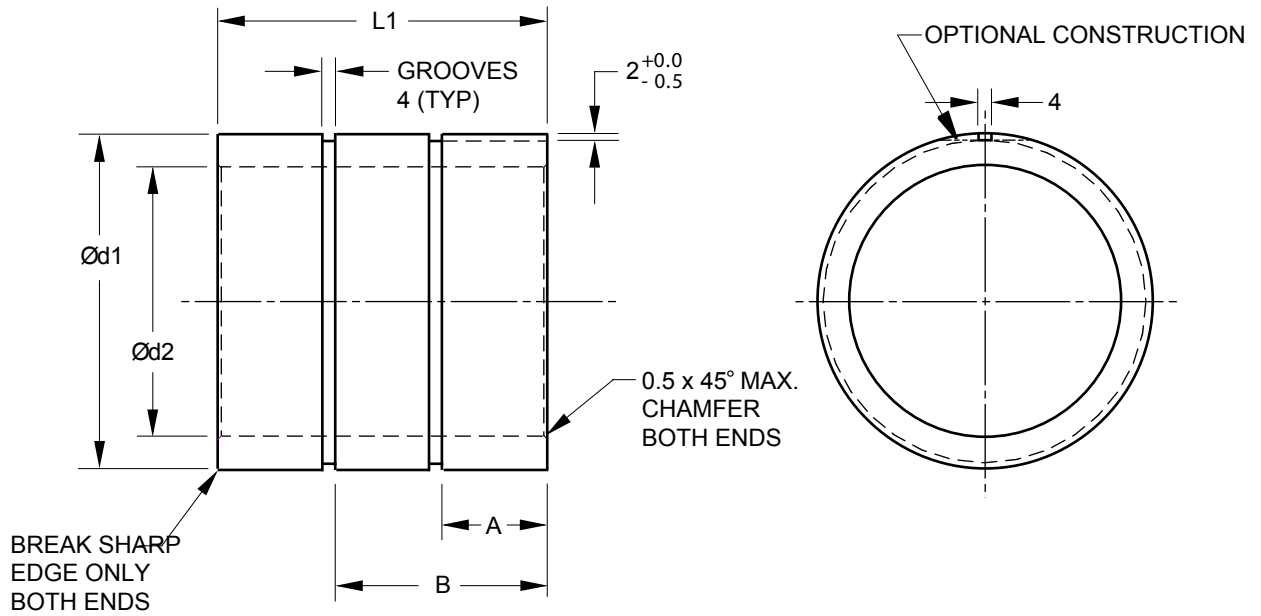
(L21 SERIES)

GLOBAL STANDARD COMPONENTS

TM **NAAMS** 

Stamping

08/01/11



NAAMS CODE	d1 +2/-0	d2 +0.6/-0.0	L1	A	B
L210032	44	34	40	18	-
L210040	52	42	50	23	-
L210050	62	52	60	28	-
L210063A	75	65	80	38	-
L210063B	75	65	75	35	-
L210080	100	82	100	32	64

NOTES & SPECIFICATIONS:

MATERIAL: ISO 2604/2 TS5 OR ISO 3305 STEEL TUBING

Break all edges.

Mark with NAAMS code and manufacturer's logo.

Liner to be placed in pattern and alignment verified at foundry.

Optional construction - 2 mm deep flat instead of 2 mm deep x 4 mm wide groove.

EYE BOLT INSERT DOUBLE ENDED

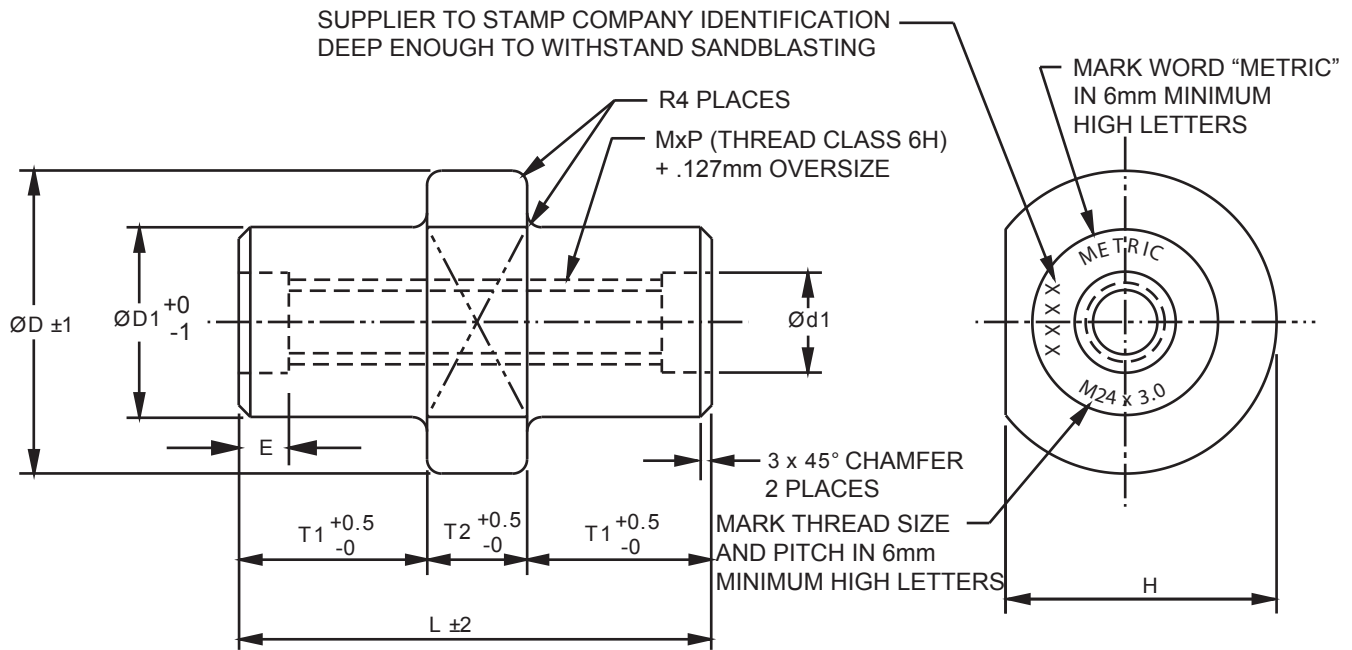
(L41 SERIES)

GLOBAL STANDARD COMPONENTS



Stamping

04/10/15



NAAMS CODE	MxP	E	D	D1	d1	L	T1	T2	H	R
L411675	16 x 2.0	7	54	36	18	75	30	15	46	2
L412090	20 x 2.5	8	57	38	22	90	35	20	52	2
L412490	24 x 3.0	9	70	45	26	90	35	20	62	2
L413015	30 x 3.5	10	76	52	33	115	45	25	68	3
L413615	36 x 4.0	10	101	70	39	115	45	25	92	3

NOTES & SPECIFICATIONS:

STEEL, ISO 683/1 - C18 Minimum

Break all Edges

For die components requiring lifting capabilities from 2 sides. (Example: pressure pads)