

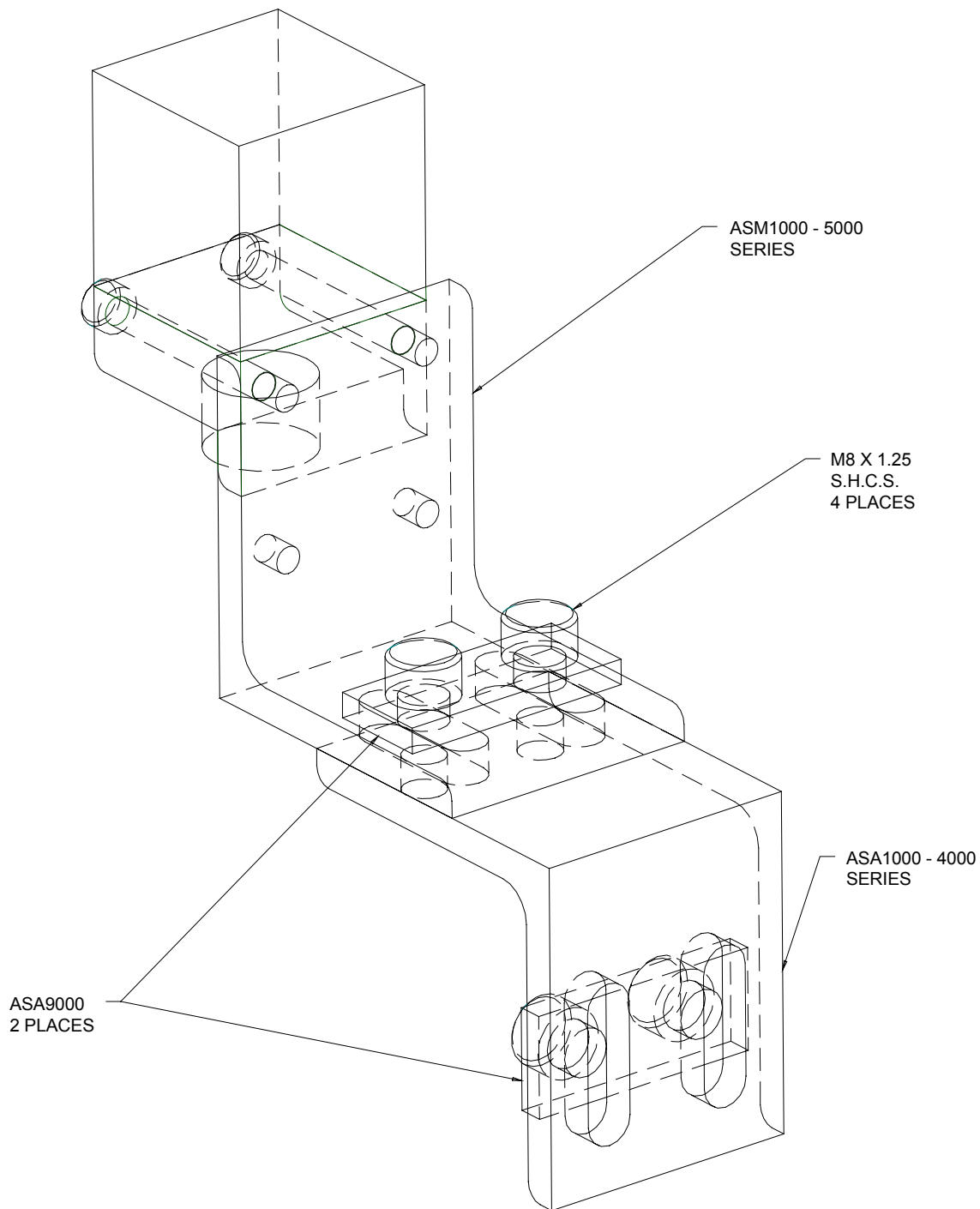
SWITCH MOUNTING COMPONENTS INDEX

| PAGE | DATE | NAAMS CODE | DESCRIPTION |
|----------------------|-------------|------------------------------------|---|
| T-1 | 04/12/24 | | Switch Mounting Components Index |
| T-2 | 08/03/07 | | Switch Mounting Assembly |
| T-3 | 08/03/07 | ASM1025 - 1155 | Switch Mounting Brackets ASM1000 Series |
| T-4 | 08/03/07 | ASM2025 - 2155 | Switch Mounting Brackets ASM2000 Series |
| T-5 | 08/03/07 | ASM3085 - 3115 | Switch Mounting Brackets ASM3000 Series |
| T-6 | 04/12/24 | ASM4085 - 4125 | Switch Mounting Brackets ASM4000 Series |
| T-7 | 08/03/07 | ASM5050 - 5110 | Switch Mounting Brackets ASM5000 Series |
| T-8 | 08/03/07 | ASM6015 | Switch Mounting Brackets ASM6015 |
| T-9 | 08/03/07 | ASA1050 - 1150 | Switch Mounting Brackets ASA1000 Series |
| T-10 | 08/03/07 | ASA2050 - 2150 | Switch Mounting Brackets ASA2000 Series |
| T-11 | 08/03/07 | ASA3025 - 3125 | Switch Mounting Brackets ASA3000 Series |
| T-12 | 08/03/07 | ASA4025 - 4125 | Switch Mounting Brackets ASA4000 Series |
| T-13 | 08/03/07 | ASA5025 | Switch Adaptor Bracket ASA5025 |
| T-14 | 08/03/07 | ASA6040 | Switch Adaptor Bracket ASA6040 |
| T-15 | 08/03/07 | ASA7050 | Switch Adaptor Bracket ASA7050 |
| T-16 | 08/03/07 | ASA8050 | Switch Adaptor Bracket ASA8050 |
| T-17 | 08/03/07 | ASA9000 | Switch Adaptor Bracket Plate ASA9000 |
| T-18 | 05/11/11 | ASC0001 | Switch Cover |
| T-19 | 01/07/13 | | Switch Mounting Post |
| T-20 | 03/30/12 | ASC0010 | Tap Pad |
| T-21 | 03/30/12 | ASC0011 | Base |
| T-22 | 03/30/12 | ASC0145, 0195, 0245, 0295, 0345 | Pin |
| T-23 | 06/01/21 | ASG0100 - 0200 | Sensor Groove Standard |

SWITCH MOUNTING ASSEMBLY

A

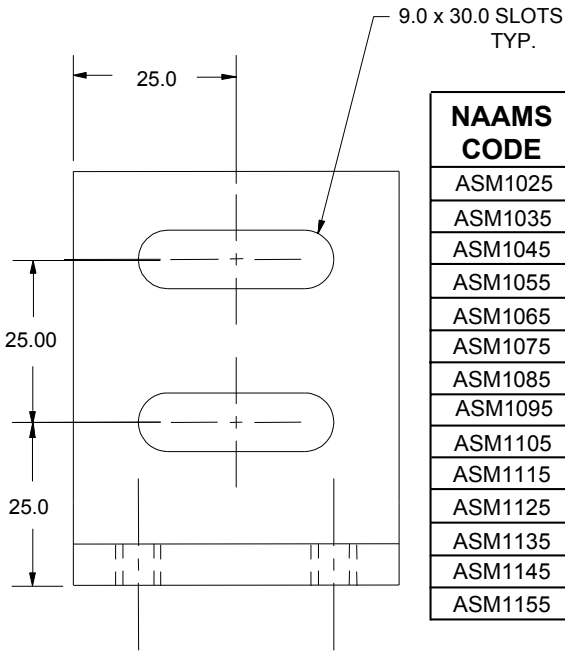
EXCEPT AS NOTED TOLERANCES SHALL BE:
1 PLACE FABRICATION ± 1.5
1 PLACE MACHINING ± 0.3
2 PLACE BETWEEN HOLES ± 0.13
MATERIAL: STEEL ASTM A-36
SEE PAGE B-1.1 FOR GLOBAL MATERIALS CHART



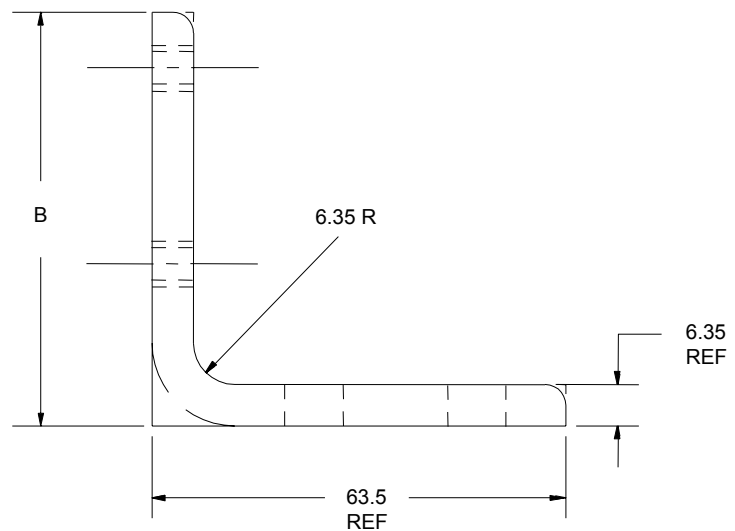
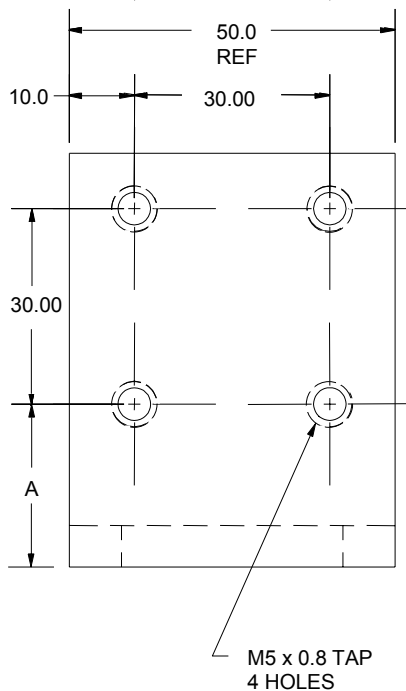
SWITCH MOUNTING BRACKETS ASM1000 SERIES

EXCEPT AS NOTED TOLERANCES SHALL BE:
1 PLACE FABRICATION ± 1.5
1 PLACE MACHINING ± 0.3
2 PLACE BETWEEN HOLES ± 0.13
MATERIAL: STEEL ASTM A-36
SEE PAGE B-1.1 FOR GLOBAL
MATERIALS CHART

BLACK OXIDE
OR PAINT



| NAAMS CODE | A | B | STOCK LIST | kg/m | Length mm | Weight kg |
|------------|-------|-------|-----------------------------------|------|-----------|-----------|
| ASM1025 | 25.0 | 63.5 | 2 1/2" x 2 1/2" x 1/4" x 50mm LG. | 5.95 | 50 | 0.30 |
| ASM1035 | 35.0 | 76.2 | 2 1/2" x 3" x 1/4" x 50mm LG. | 6.70 | 50 | 0.34 |
| ASM1045 | 45.0 | 88.9 | 2 1/2" x 3 1/2" x 1/4" x 50mm LG. | 7.29 | 50 | 0.36 |
| ASM1055 | 55.0 | 95.0 | 1/4" x 2" x 146.0mm LG. | 2.54 | 146 | 0.37 |
| ASM1065 | 65.0 | 105.0 | 1/4" x 2" x 156.0mm LG. | 2.54 | 156 | 0.40 |
| ASM1075 | 75.0 | 115.0 | 1/4" x 2" x 166.0mm LG. | 2.54 | 166 | 0.42 |
| ASM1085 | 85.0 | 125.0 | 1/4" x 2" x 176.0mm LG. | 2.54 | 176 | 0.45 |
| ASM1095 | 95.0 | 135.0 | 1/4" x 2" x 186.0mm LG. | 2.54 | 186 | 0.47 |
| ASM1105 | 105.0 | 145.0 | 1/4" x 2" x 196.0mm LG. | 2.54 | 196 | 0.50 |
| ASM1115 | 115.0 | 155.0 | 1/4" x 2" x 206.0mm LG. | 2.54 | 206 | 0.52 |
| ASM1125 | 125.0 | 165.0 | 1/4" x 2" x 216.0mm LG. | 2.54 | 216 | 0.55 |
| ASM1135 | 135.0 | 175.0 | 1/4" x 2" x 226.0mm LG. | 2.54 | 226 | 0.57 |
| ASM1145 | 145.0 | 185.0 | 1/4" x 2" x 236.0mm LG. | 2.54 | 236 | 0.60 |
| ASM1155 | 155.0 | 195.0 | 1/4" x 2" x 246.0mm LG. | 2.54 | 246 | 0.62 |



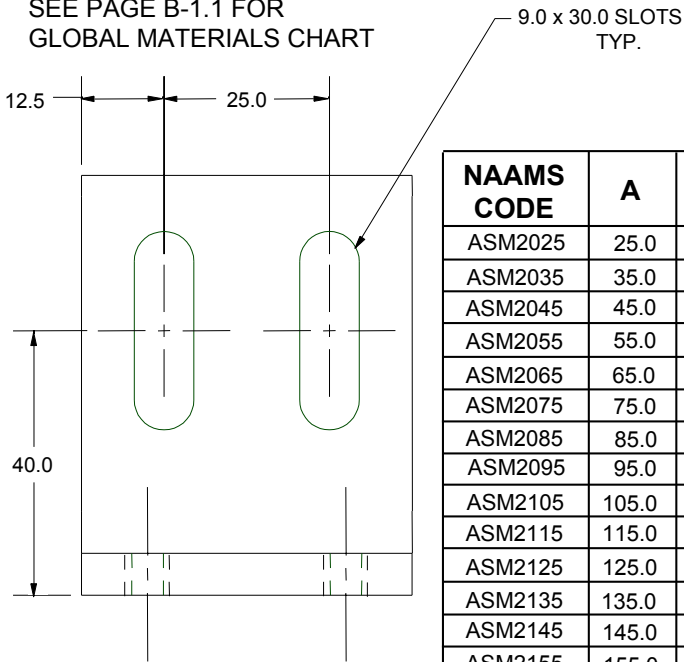
B

A

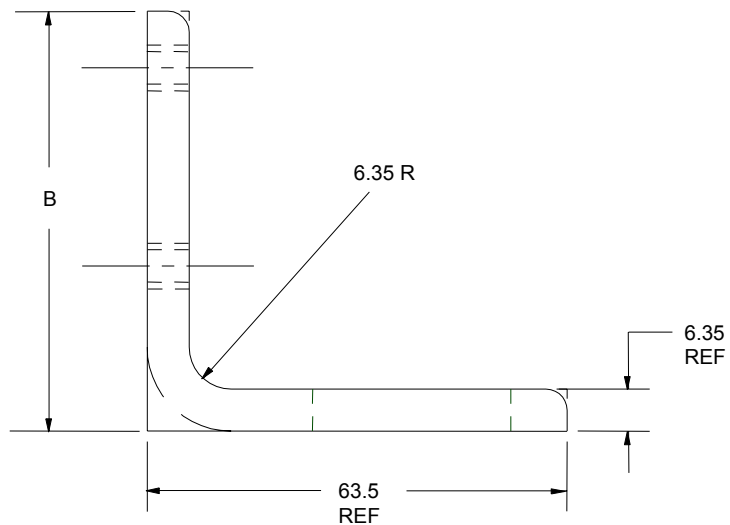
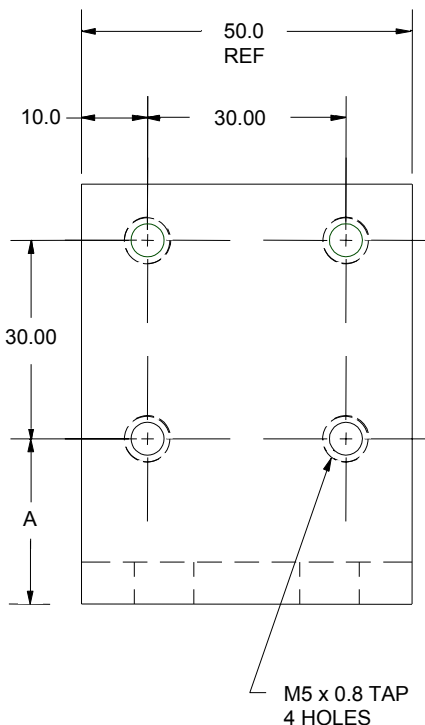
SWITCH MOUNTING BRACKETS ASM2000 SERIES

EXCEPT AS NOTED TOLERANCES SHALL BE:
1 PLACE FABRICATION ± 1.5
1 PLACE MACHINING ± 0.3
2 PLACE BETWEEN HOLES ± 0.13
MATERIAL: STEEL ASTM A-36
SEE PAGE B-1.1 FOR
GLOBAL MATERIALS CHART

BLACK OXIDE
OR PAINT



| NAAMS CODE | A | B | STOCK LIST | kg/m | Length mm | Weight kg |
|------------|-------|-------|---------------------------|------|-----------|-----------|
| ASM2025 | 25.0 | 63.5 | 2½" x 2½" x ¼" x 50mm LG. | 5.95 | 50 | 0.30 |
| ASM2035 | 35.0 | 76.2 | 2½" x 3" x ¼" x 50mm LG. | 6.70 | 50 | 0.34 |
| ASM2045 | 45.0 | 88.9 | 2½" x 3½" x ¼" x 50mm LG. | 7.29 | 50 | 0.36 |
| ASM2055 | 55.0 | 95.0 | ¼" x 2" x 146.0mm LG. | 2.54 | 146 | 0.37 |
| ASM2065 | 65.0 | 105.0 | ¼" x 2" x 156.0mm LG. | 2.54 | 156 | 0.40 |
| ASM2075 | 75.0 | 115.0 | ¼" x 2" x 166.0mm LG. | 2.54 | 166 | 0.42 |
| ASM2085 | 85.0 | 125.0 | ¼" x 2" x 176.0mm LG. | 2.54 | 176 | 0.45 |
| ASM2095 | 95.0 | 135.0 | ¼" x 2" x 186.0mm LG. | 2.54 | 186 | 0.47 |
| ASM2105 | 105.0 | 145.0 | ¼" x 2" x 196.0mm LG. | 2.54 | 196 | 0.50 |
| ASM2115 | 115.0 | 155.0 | ¼" x 2" x 206.0mm LG. | 2.54 | 206 | 0.52 |
| ASM2125 | 125.0 | 165.0 | ¼" x 2" x 216.0mm LG. | 2.54 | 216 | 0.55 |
| ASM2135 | 135.0 | 175.0 | ¼" x 2" x 226.0mm LG. | 2.54 | 226 | 0.57 |
| ASM2145 | 145.0 | 185.0 | ¼" x 2" x 236.0mm LG. | 2.54 | 236 | 0.60 |
| ASM2155 | 155.0 | 195.0 | ¼" x 2" x 246.0mm LG. | 2.54 | 246 | 0.62 |



B

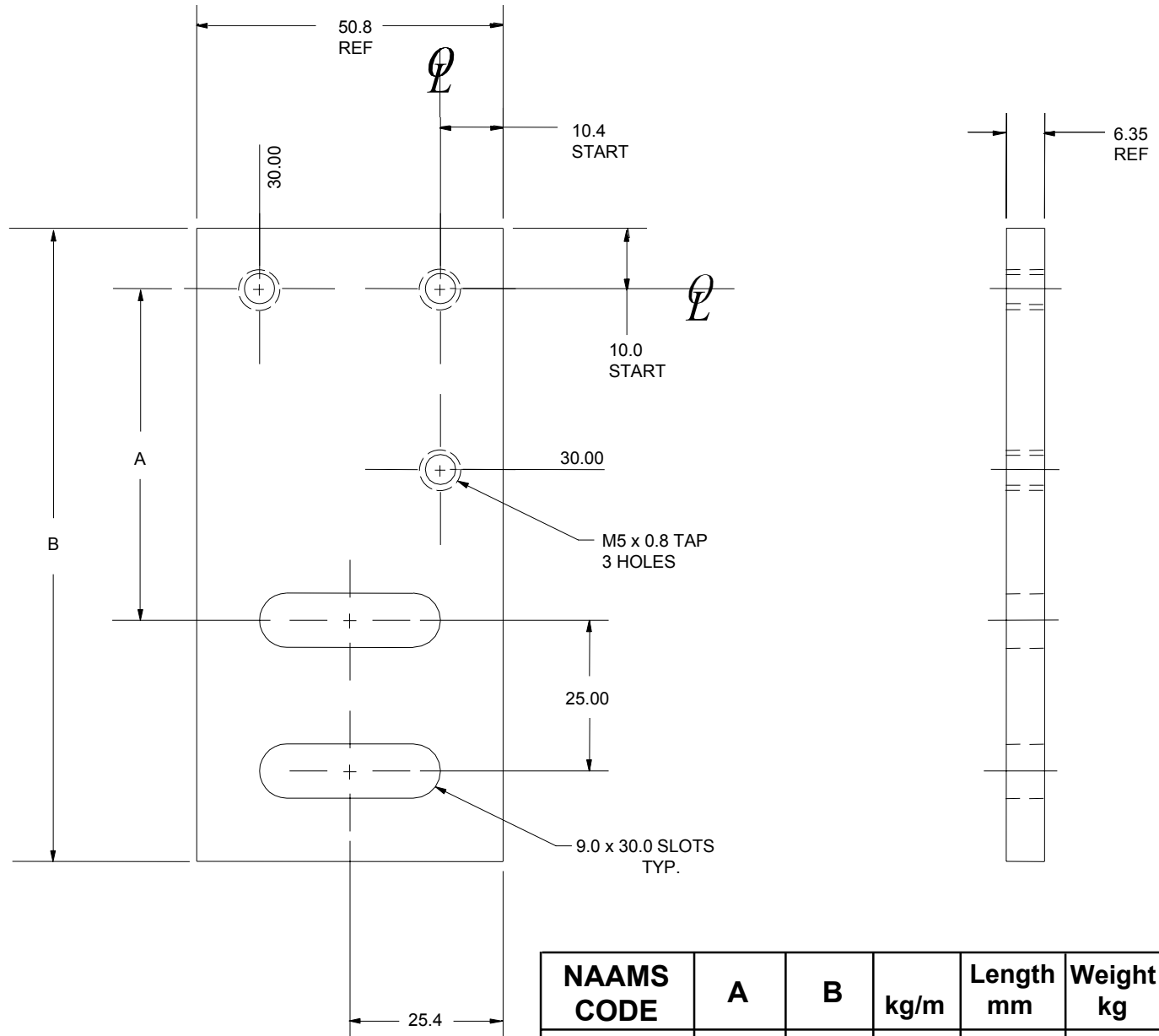
A

SWITCH MOUNTING BRACKETS ASM3000 SERIES

EXCEPT AS NOTED TOLERANCES SHALL BE:
1 PLACE FABRICATION ± 1.5
1 PLACE MACHINING ± 0.3
2 PLACE BETWEEN HOLES ± 0.13
MATERIAL: STEEL ASTM A-36
SEE PAGE B-1.1 FOR GLOBAL MATERIALS CHART

BLACK OXIDE
OR PAINT

B

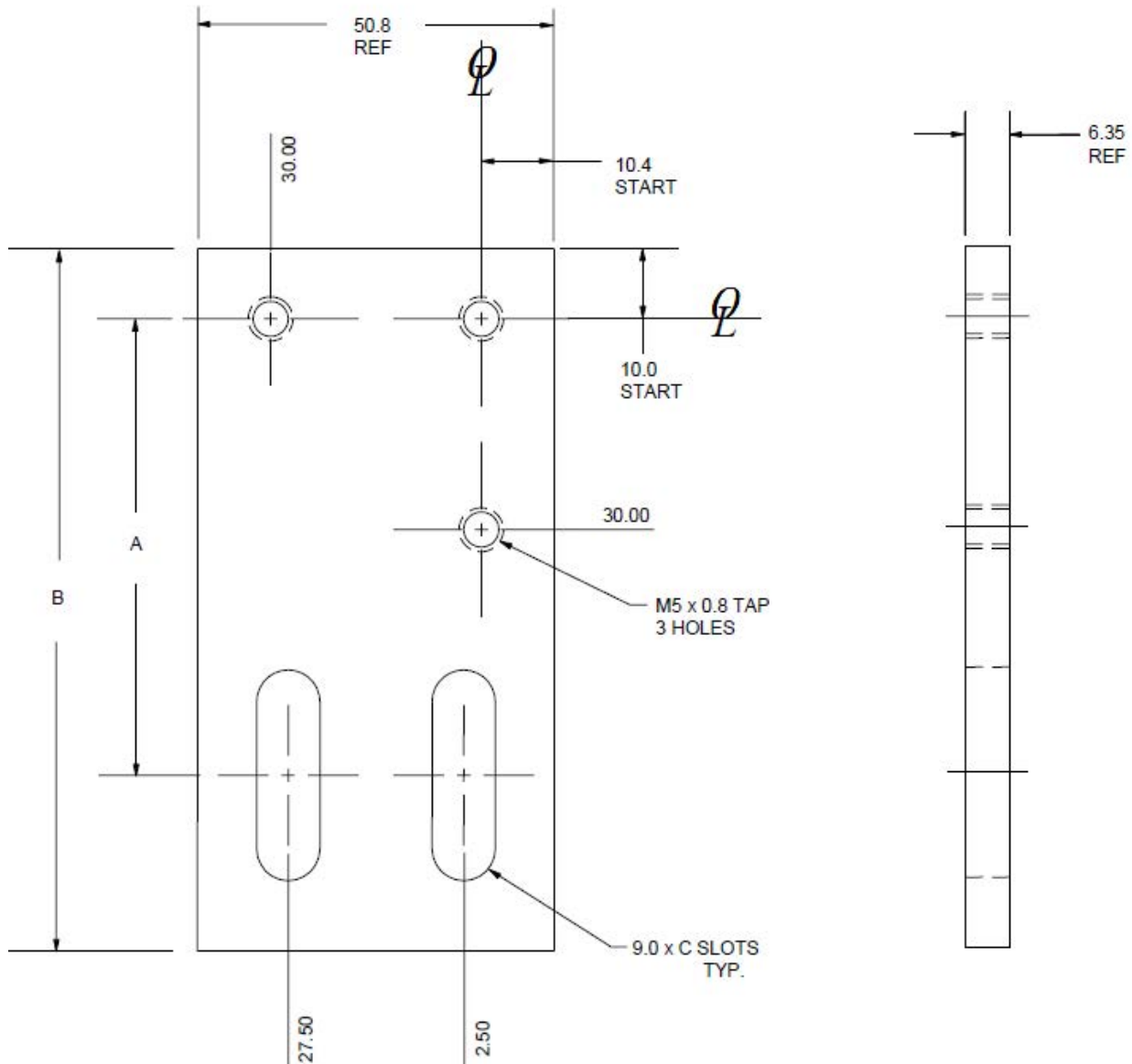


| NAAMS CODE | A | B | kg/m | Length mm | Weight kg |
|------------|-------|-------|------|-----------|-----------|
| ASM3085 | 85.0 | 135.0 | 2.54 | 135 | 0.34 |
| ASM3095 | 95.0 | 145.0 | 2.54 | 145 | 0.37 |
| ASM3105 | 105.0 | 155.0 | 2.54 | 155 | 0.39 |
| ASM3115 | 115.0 | 165.0 | 2.54 | 165 | 0.42 |

A

MAT'L: 1/4" x 2" x B MM LG.

SWITCH MOUNTING BRACKETS ASM4000 SERIES



EXCEPT AS NOTED TOLERANCES SHALL BE:

- 1 PLACE FABRICATION ± 1.5
 - 1 PLACE MACHINING ± 0.3
 - 2 PLACE BETWEEN HOLES ± 0.13
- MATERIAL: STEEL ASTM A36 SEE PAGE B-1.1 FOR GLOBAL MATERIALS CHART

BLACK OXIDE
OR PAINT

MAT'L: $\frac{1}{4}$ " x 2" x B MM LG.

| NAAMS CODE | A | B | C | kg/m | Length mm | Weight kg |
|------------|-------|-------|------|------|-----------|-----------|
| ASM4085 | 85.0 | 120.0 | 30.0 | 2.54 | 120 | 0.30 |
| ASM4095 | 95.0 | 130.0 | 30.0 | 2.54 | 130 | 0.33 |
| ASM4105 | 105.0 | 140.0 | 30.0 | 2.54 | 140 | 0.36 |
| ASM4115 | 115.0 | 150.0 | 30.0 | 2.54 | 150 | 0.38 |
| ASM4125 | 125.0 | 160.0 | 30.0 | 2.54 | 160 | 0.41 |
| ASM4100 | 100.0 | 150.0 | 60.0 | 2.54 | 150 | 0.38 |
| ASM4110 | 110.0 | 160.0 | 60.0 | 2.54 | 160 | 0.41 |
| ASM4120 | 120.0 | 170.0 | 60.0 | 2.54 | 170 | 0.43 |
| ASM4130 | 130.0 | 180.0 | 60.0 | 2.54 | 180 | 0.46 |
| ASM4140 | 140.0 | 190.0 | 60.0 | 2.54 | 190 | 0.48 |

A

B

C

SWITCH MOUNTING BRACKETS ASM5000 SERIES

EXCEPT AS NOTED TOLERANCES SHALL BE:

1 PLACE FABRICATION ± 1.5

1 PLACE MACHINING ± 0.3

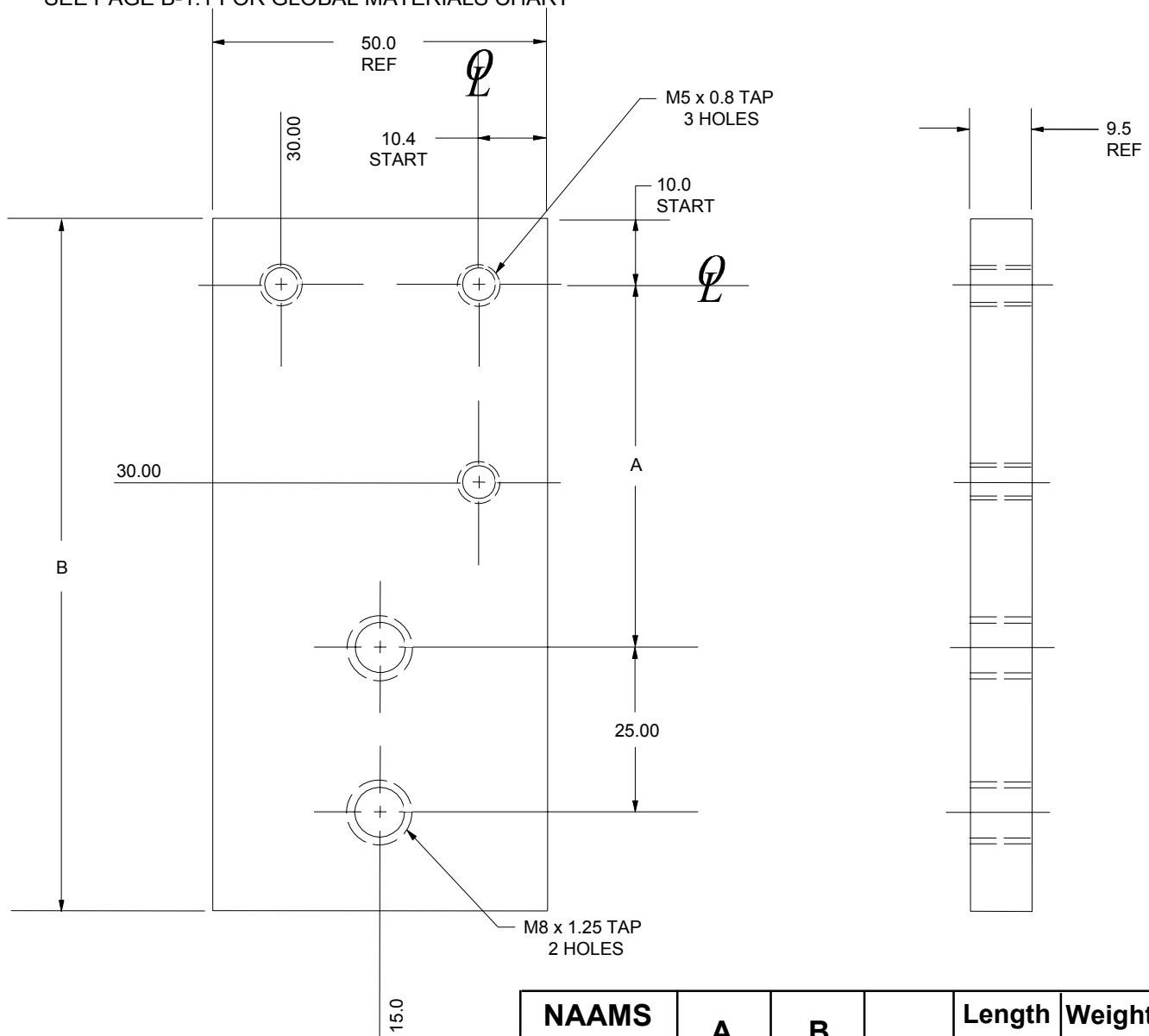
2 PLACE BETWEEN HOLES ± 0.13

MATERIAL: STEEL ASTM A-36

SEE PAGE B-1.1 FOR GLOBAL MATERIALS CHART

BLACK OXIDE
OR PAINT

C



| NAAMS CODE | A | B | kg/m | Length mm | Weight kg |
|------------|-------|-------|------|-----------|-----------|
| ASM5050 | 50.0 | 100.0 | 3.80 | 100 | 0.38 |
| ASM5060 | 60.0 | 110.0 | 3.80 | 110 | 0.42 |
| ASM5070 | 70.0 | 120.0 | 3.80 | 120 | 0.46 |
| ASM5080 | 80.0 | 130.0 | 3.80 | 130 | 0.49 |
| ASM5090 | 90.0 | 140.0 | 3.80 | 140 | 0.53 |
| ASM5100 | 100.0 | 150.0 | 3.80 | 150 | 0.57 |
| ASM5110 | 110.0 | 160.0 | 3.80 | 160 | 0.61 |

MAT'L: $\frac{3}{8}$ " x 2" x "B" LG.

B

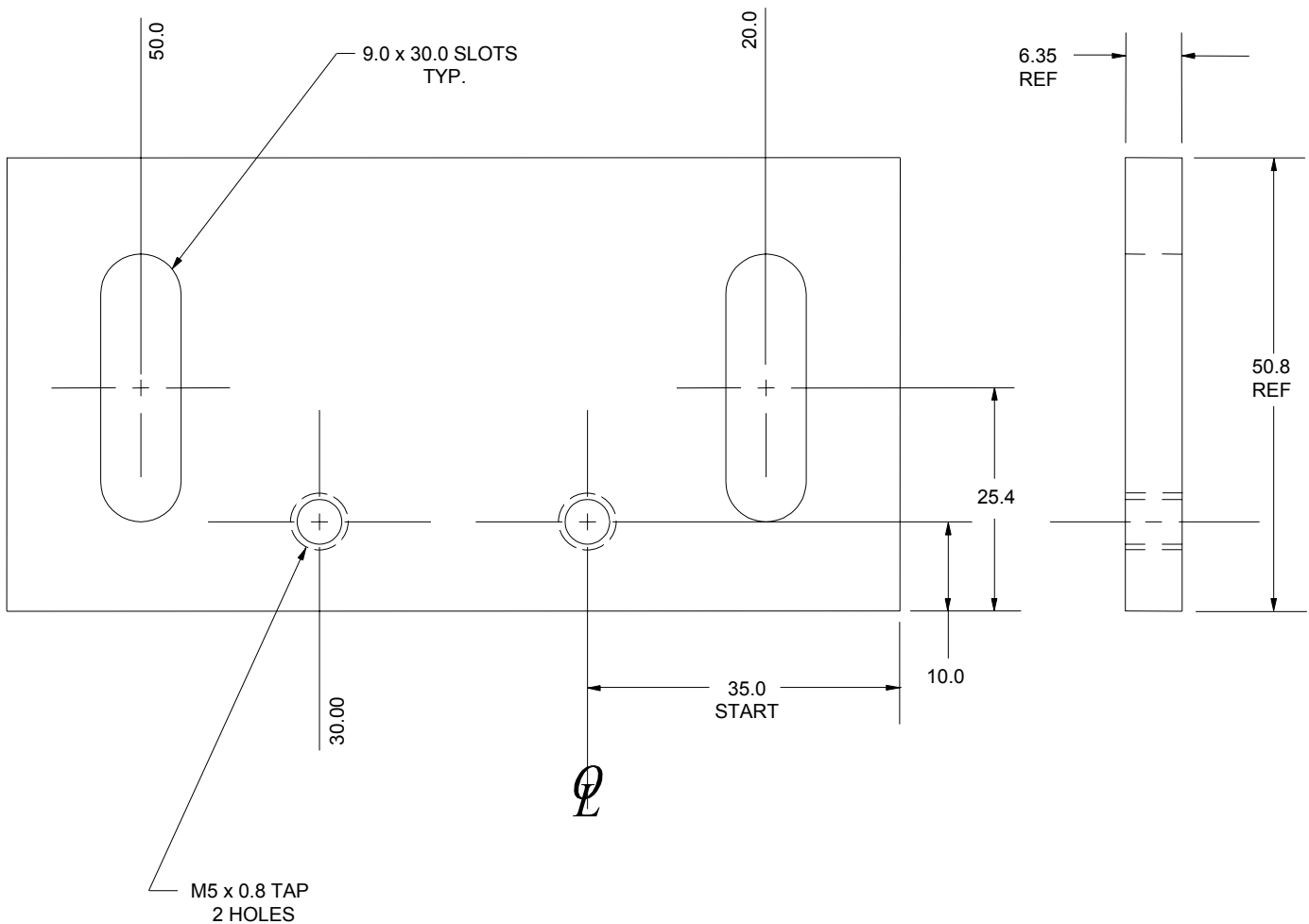
A

SWITCH MOUNTING BRACKETS ASM6015

EXCEPT AS NOTED TOLERANCES SHALL BE:
 1 PLACE FABRICATION ± 1.5
 1 PLACE MACHINING ± 0.3
 2 PLACE BETWEEN HOLES ± 0.13
 MATERIAL: STEEL ASTM A-36
 SEE PAGE B-1.1 FOR GLOBAL MATERIALS CHART

BLACK OXIDE
OR PAINT

B



MAT'L: 1/4" x 2" x 100.0mm LG.

| NAAMS CODE | kg/m | Length mm | Weight kg |
|------------|------|-----------|-----------|
| ASM6015 | 2.54 | 100 | 0.25 |

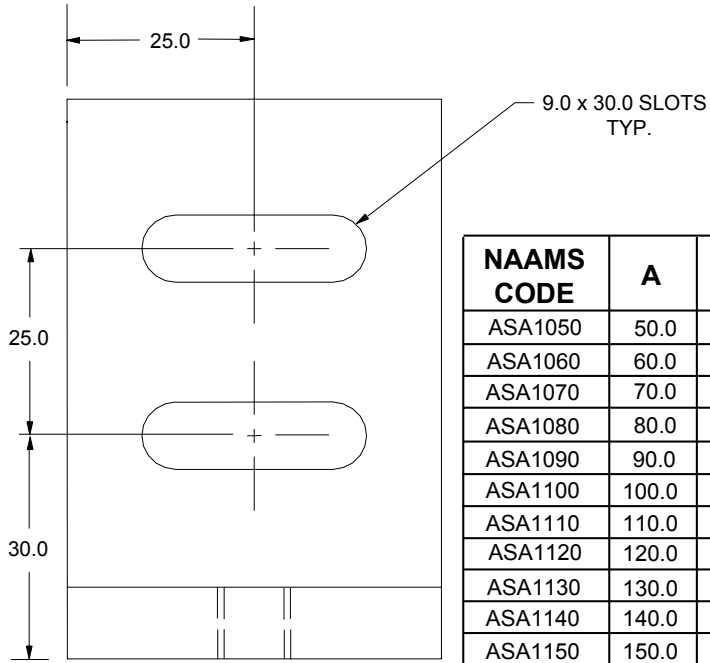
A

SWITCH ADAPTOR BRACKETS ASA1000 SERIES

EXCEPT AS NOTED TOLERANCES SHALL BE:
1 PLACE FABRICATION ± 1.5
1 PLACE MACHINING ± 0.3
2 PLACE BETWEEN HOLES ± 0.13
MATERIAL: STEEL ASTM A-36
SEE PAGE B-1.1 FOR GLOBAL MATERIALS CHART

BLACK OXIDE
OR PAINT

D

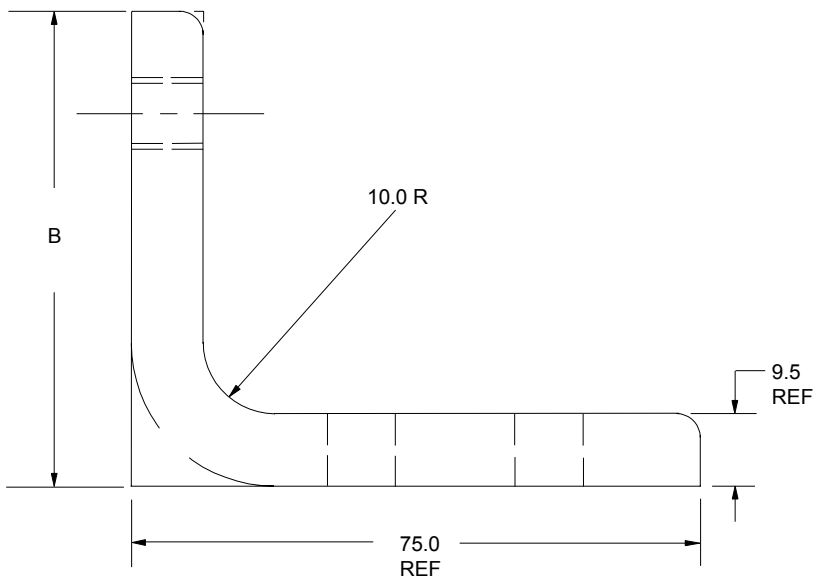
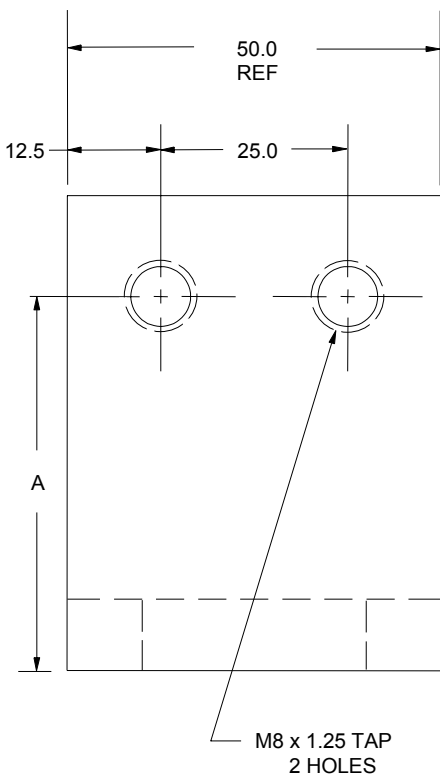


| NAAMS CODE | A | B | STOCK LIST | kg/m | Length mm | Weight kg |
|------------|-------|-------|-------------------------------|-------|-----------|-----------|
| ASA1050 | 50.0 | 63.5 | 3" x 2 1/2" x 3/8" x 50mm LG. | 9.82 | 50 | 0.49 |
| ASA1060 | 60.0 | 76.2 | 3" x 3" x 3/8" x 50mm LG. | 10.71 | 50 | 0.54 |
| ASA1070 | 70.0 | 88.9 | 3" x 3 1/2" x 3/8" x 50mm LG. | 11.68 | 50 | 0.58 |
| ASA1080 | 80.0 | 95.0 | 3/8" x 2" x 152.0mm LG. | 3.80 | 152 | 0.58 |
| ASA1090 | 90.0 | 105.0 | 3/8" x 2" x 162.0mm LG. | 3.80 | 162 | 0.62 |
| ASA1100 | 100.0 | 115.0 | 3/8" x 2" x 172.0mm LG. | 3.80 | 172 | 0.65 |
| ASA1110 | 110.0 | 125.0 | 3/8" x 2" x 182.0mm LG. | 3.80 | 182 | 0.69 |
| ASA1120 | 120.0 | 135.0 | 3/8" x 2" x 192.0mm LG. | 3.80 | 192 | 0.73 |
| ASA1130 | 130.0 | 145.0 | 3/8" x 2" x 202.0mm LG. | 3.80 | 202 | 0.77 |
| ASA1140 | 140.0 | 155.0 | 3/8" x 2" x 212.0mm LG. | 3.80 | 212 | 0.81 |
| ASA1150 | 150.0 | 165.0 | 3/8" x 2" x 222.0mm LG. | 3.80 | 222 | 0.84 |

A

B

C

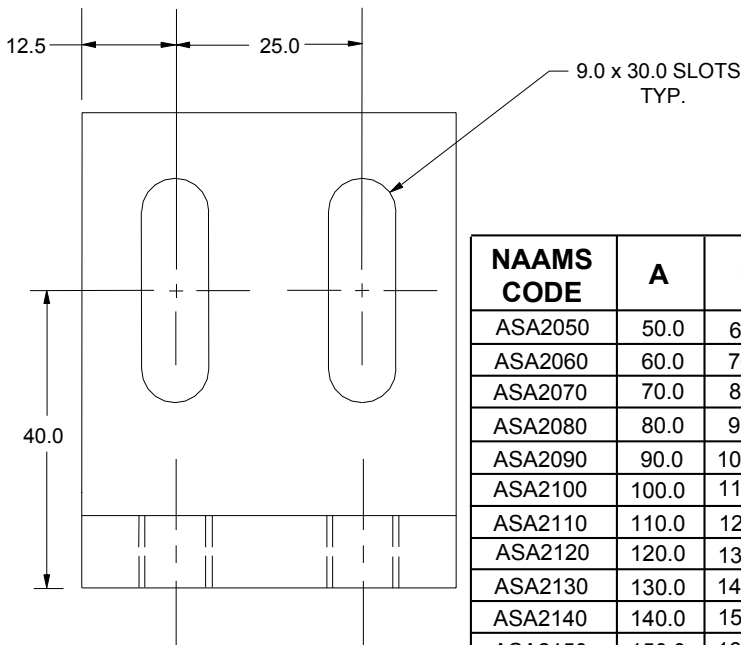


SWITCH ADAPTOR BRACKETS ASA2000 SERIES

EXCEPT AS NOTED TOLERANCES SHALL BE:
1 PLACE FABRICATION ± 1.5
1 PLACE MACHINING ± 0.3
2 PLACE BETWEEN HOLES ± 0.13
MATERIAL: STEEL ASTM A-36
SEE PAGE B-1.1 FOR GLOBAL MATERIALS CHART

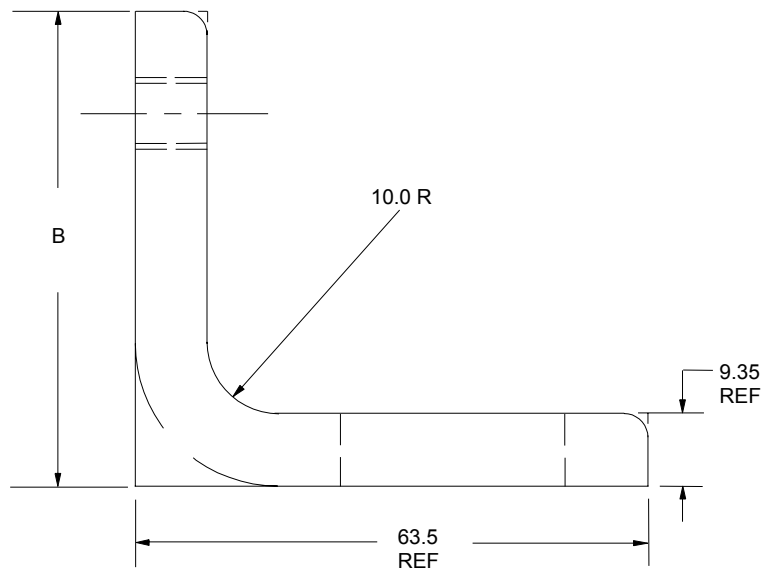
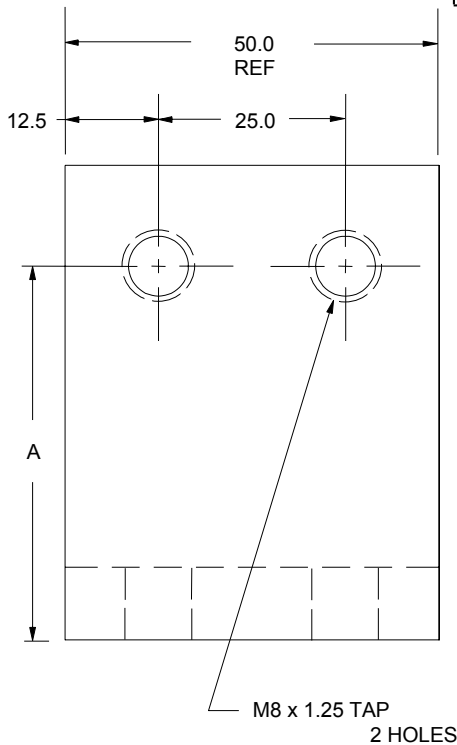
BLACK OXIDE
OR PAINT

D



| NAAMS CODE | A | B | STOCK LIST | kg/m | Length mm | Weight kg |
|------------|-------|-------|-----------------------------------|-------|-----------|-----------|
| ASA2050 | 50.0 | 63.5 | 2 1/2" x 2 1/2" x 3/8" x 50mm LG. | 8.78 | 50 | 0.44 |
| ASA2060 | 60.0 | 76.2 | 2 1/2" x 3" x 3/8" x 50mm LG. | 9.82 | 50 | 0.49 |
| ASA2070 | 70.0 | 88.9 | 2 1/2" x 3 1/2" x 3/8" x 50mm LG. | 11.68 | 50 | 0.58 |
| ASA2080 | 80.0 | 95.0 | 3/8" x 2" x 140.0mm LG. | 3.80 | 140 | 0.53 |
| ASA2090 | 90.0 | 105.0 | 3/8" x 2" x 150.0mm LG. | 3.80 | 150 | 0.57 |
| ASA2100 | 100.0 | 115.0 | 3/8" x 2" x 160.0mm LG. | 3.80 | 160 | 0.61 |
| ASA2110 | 110.0 | 125.0 | 3/8" x 2" x 170.0mm LG. | 3.80 | 170 | 0.65 |
| ASA2120 | 120.0 | 135.0 | 3/8" x 2" x 180.0mm LG. | 3.80 | 180 | 0.68 |
| ASA2130 | 130.0 | 145.0 | 3/8" x 2" x 190.0mm LG. | 3.80 | 190 | 0.72 |
| ASA2140 | 140.0 | 155.0 | 3/8" x 2" x 200.0mm LG. | 3.80 | 200 | 0.76 |
| ASA2150 | 150.0 | 165.0 | 3/8" x 2" x 210.0mm LG. | 3.80 | 210 | 0.80 |

A
B
C



SWITCH ADAPTOR BRACKETS ASA3000 SERIES

EXCEPT AS NOTED TOLERANCES SHALL BE:

1 PLACE FABRICATION ± 1.5

1 PLACE MACHINING ± 0.3

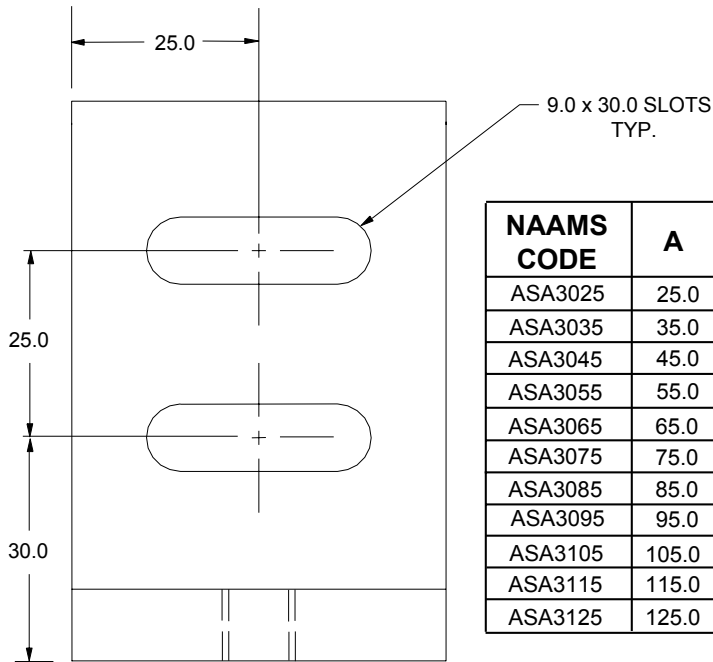
2 PLACE BETWEEN HOLES ± 0.13

MATERIAL: STEEL ASTM A-36

SEE PAGE B-1.1 FOR GLOBAL MATERIALS CHART

BLACK OXIDE
OR PAINT

D

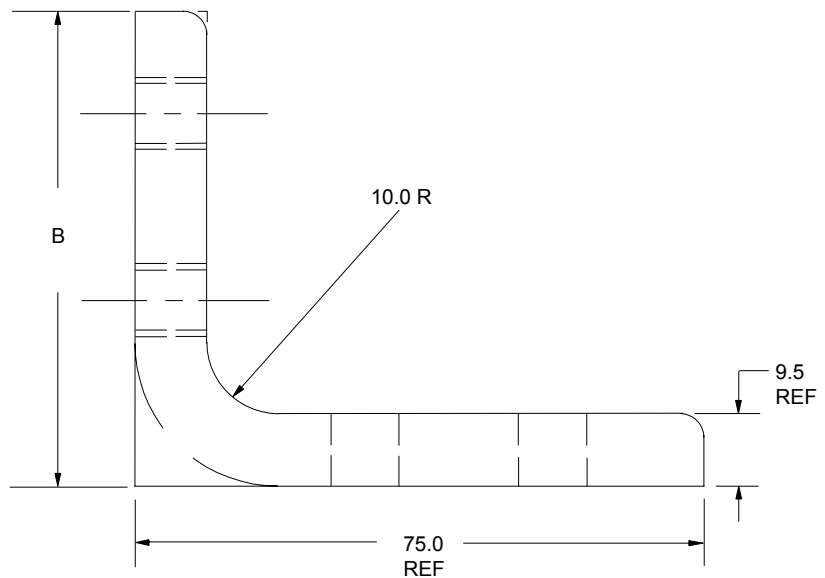
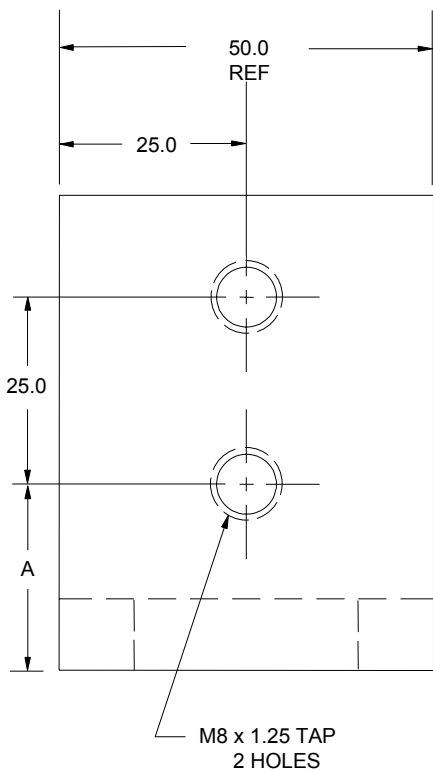


| NAAMS CODE | A | B | STOCK LIST | kg/m | Length mm | Weight kg |
|------------|-------|-------|-------------------------------|-------|-----------|-----------|
| ASA3025 | 25.0 | 63.5 | 3" x 2 1/2" x 3/8" x 50mm LG. | 9.82 | 50 | 0.49 |
| ASA3035 | 35.0 | 76.2 | 3" x 3" x 3/8" x 50mm LG. | 10.71 | 50 | 0.54 |
| ASA3045 | 45.0 | 88.9 | 3" x 3 1/2" x 3/8" x 50mm LG. | 11.68 | 50 | 0.58 |
| ASA3055 | 55.0 | 95.0 | 3/8" x 2" x 152.0mm LG. | 3.80 | 152 | 0.58 |
| ASA3065 | 65.0 | 105.0 | 3/8" x 2" x 162.0mm LG. | 3.80 | 162 | 0.62 |
| ASA3075 | 75.0 | 115.0 | 3/8" x 2" x 172.0mm LG. | 3.80 | 172 | 0.65 |
| ASA3085 | 85.0 | 125.0 | 3/8" x 2" x 182.0mm LG. | 3.80 | 182 | 0.69 |
| ASA3095 | 95.0 | 135.0 | 3/8" x 2" x 192.0mm LG. | 3.80 | 192 | 0.73 |
| ASA3105 | 105.0 | 145.0 | 3/8" x 2" x 202.0mm LG. | 3.80 | 202 | 0.77 |
| ASA3115 | 115.0 | 155.0 | 3/8" x 2" x 212.0mm LG. | 3.80 | 212 | 0.81 |
| ASA3125 | 125.0 | 165.0 | 3/8" x 2" x 222.0mm LG. | 3.80 | 222 | 0.84 |

A

B

C



SWITCH ADAPTOR BRACKETS ASA4000 SERIES

EXCEPT AS NOTED TOLERANCES SHALL BE:

1 PLACE FABRICATION ± 1.5

1 PLACE MACHINING ± 0.3

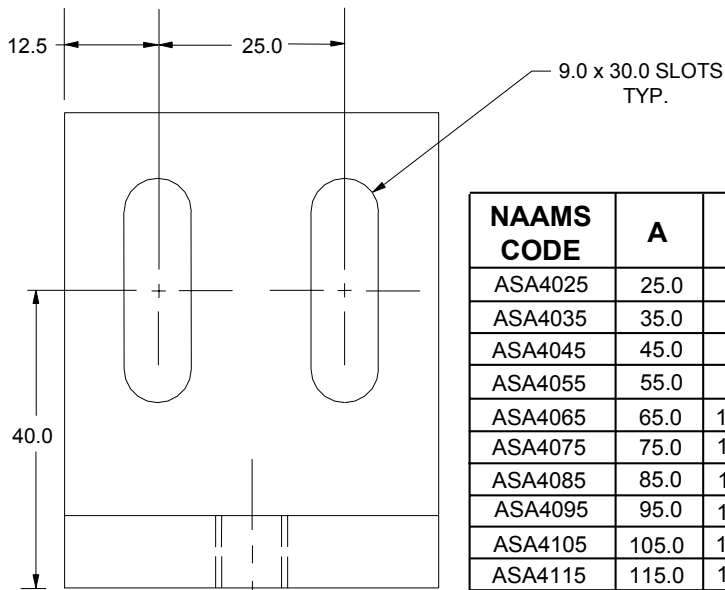
2 PLACE BETWEEN HOLES ± 0.13

MATERIAL: STEEL ASTM A-36

SEE PAGE B-1.1 FOR GLOBAL MATERIALS CHART

BLACK OXIDE
OR PAINT

E

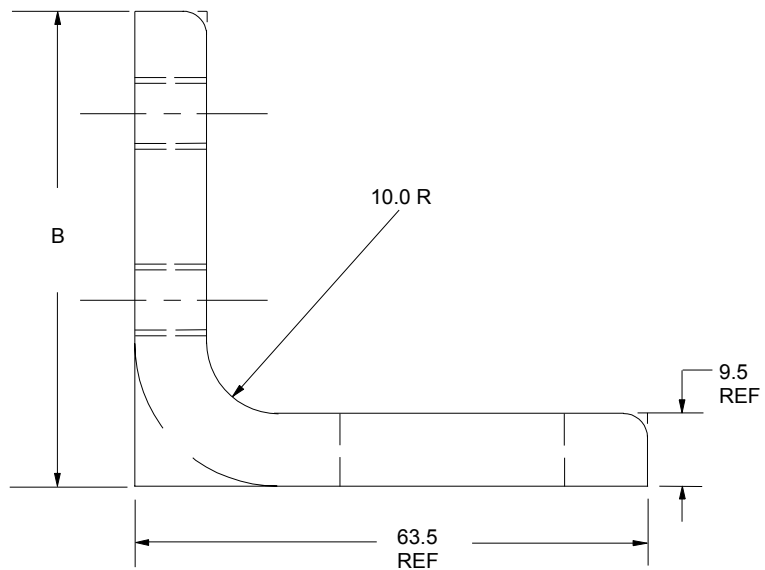
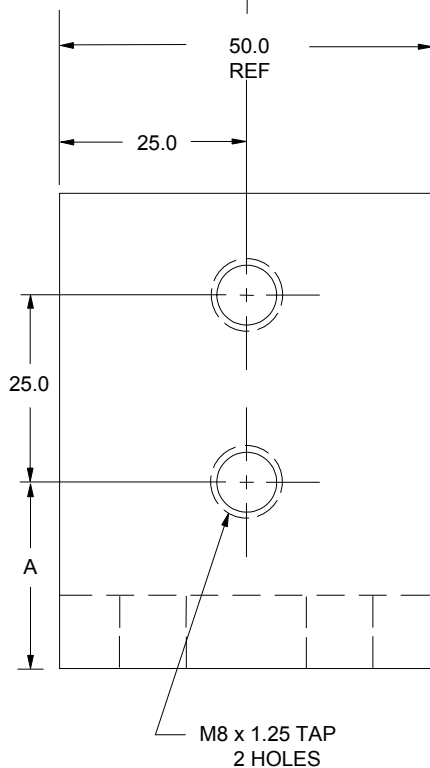


| NAAMS CODE | A | B | STOCK LIST | kg/m | Length mm | Weight kg |
|------------|-------|-------|-----------------------------------|-------|-----------|-----------|
| ASA4025 | 25.0 | 63.5 | 2 1/2" x 2 1/2" x 3/8" x 50mm LG. | 8.78 | 50 | 0.44 |
| ASA4035 | 35.0 | 76.2 | 2 1/2" x 3" x 3/8" x 50mm LG. | 9.82 | 50 | 0.49 |
| ASA4045 | 45.0 | 88.9 | 2 1/2" x 3 1/2" x 3/8" x 50mm LG. | 11.68 | 50 | 0.58 |
| ASA4055 | 55.0 | 95.0 | 3/8" x 2" x 140.0mm LG. | 3.80 | 140 | 0.53 |
| ASA4065 | 65.0 | 105.0 | 3/8" x 2" x 150.0mm LG. | 3.80 | 150 | 0.57 |
| ASA4075 | 75.0 | 115.0 | 3/8" x 2" x 160.0mm LG. | 3.80 | 160 | 0.61 |
| ASA4085 | 85.0 | 125.0 | 3/8" x 2" x 170.0mm LG. | 3.80 | 170 | 0.65 |
| ASA4095 | 95.0 | 135.0 | 3/8" x 2" x 180.0mm LG. | 3.80 | 180 | 0.68 |
| ASA4105 | 105.0 | 145.0 | 3/8" x 2" x 190.0mm LG. | 3.80 | 190 | 0.72 |
| ASA4115 | 115.0 | 155.0 | 3/8" x 2" x 200.0mm LG. | 3.80 | 200 | 0.76 |
| ASA4125 | 125.0 | 165.0 | 3/8" x 2" x 210.0mm LG. | 3.80 | 210 | 0.80 |

A

B

D



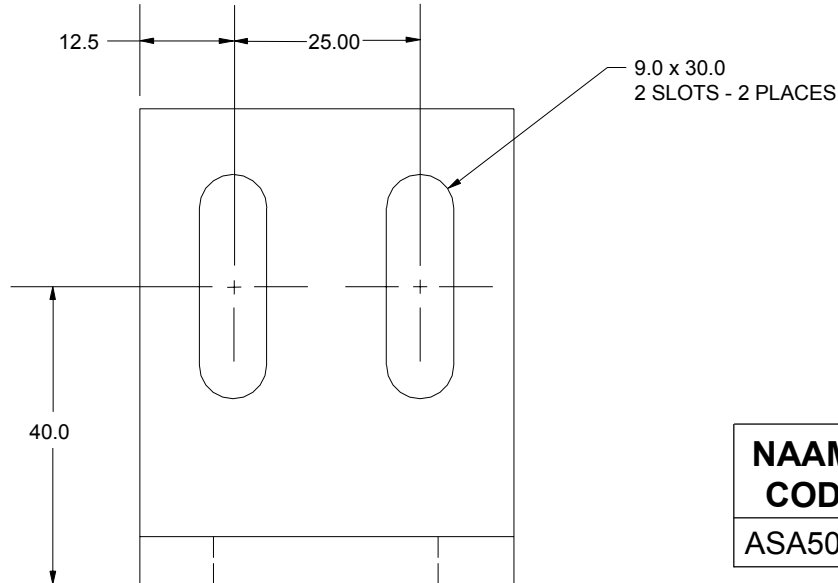
C

SWITCH ADAPTOR BRACKETS ASA5025

EXCEPT AS NOTED TOLERANCES SHALL BE:
1 PLACE FABRICATION ± 1.5
1 PLACE MACHINING ± 0.3
2 PLACE BETWEEN HOLES ± 0.13
MATERIAL: STEEL ASTM A-36
SEE PAGE B-1.1 FOR GLOBAL MATERIALS CHART

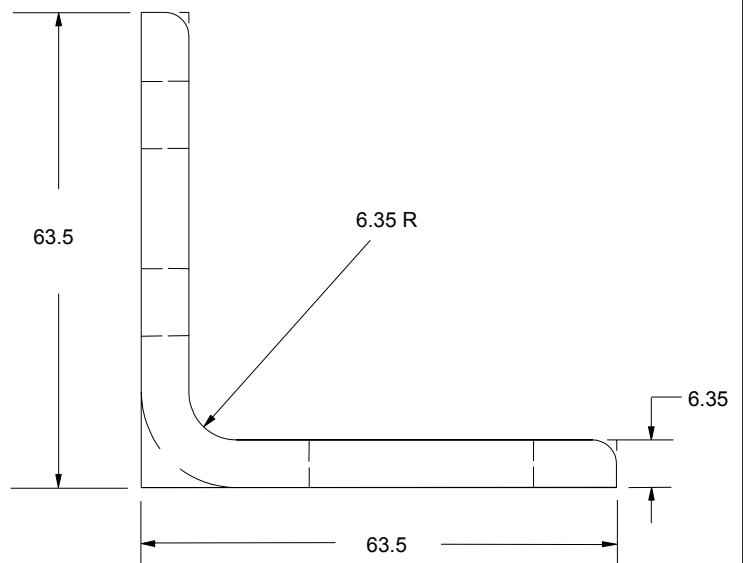
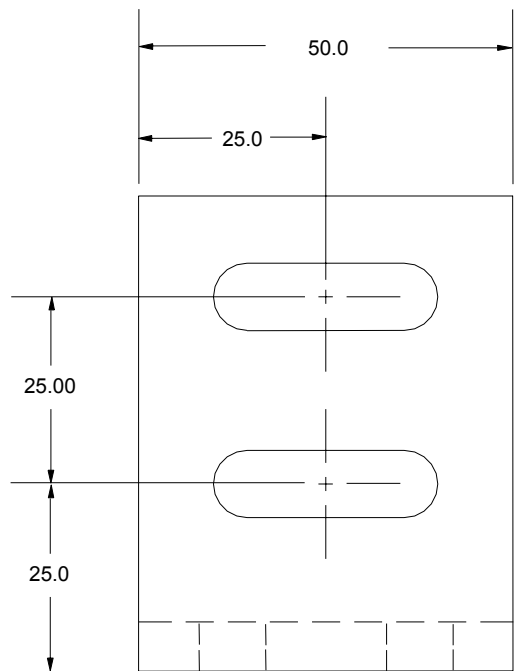
BLACK OXIDE
OR PAINT

B



| NAAMS CODE | kg/m | Length mm | Weight kg |
|------------|------|-----------|-----------|
| ASA5025 | 5.95 | 50 | 0.30 |

A

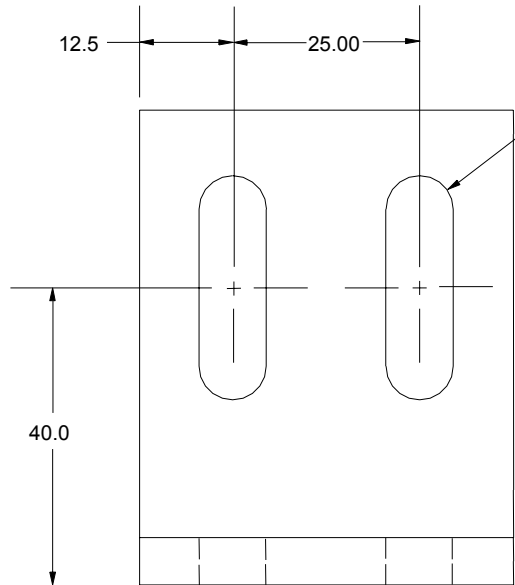


MAT'L: STL ANGLE 2½" x 2½" x ¼" x 50.0 mm LG OR
BENT STRAP ¼" x 2" x 114.0 mm LG

SWITCH ADAPTOR BRACKETS ASA6040

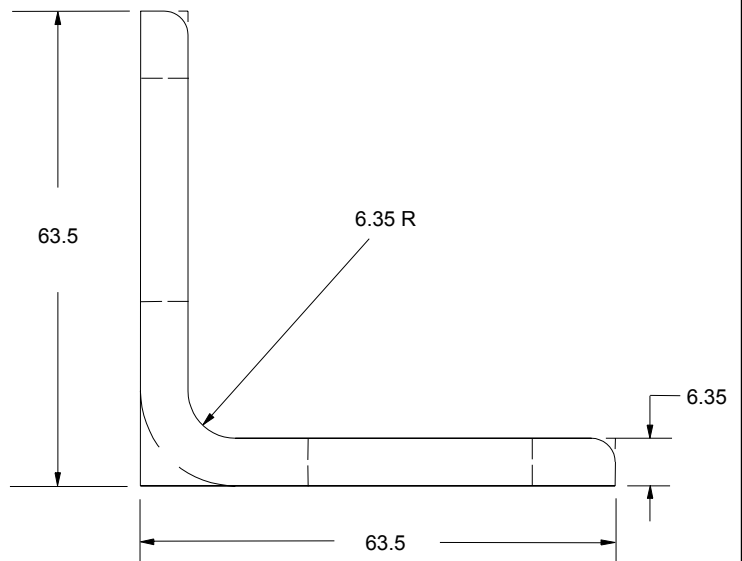
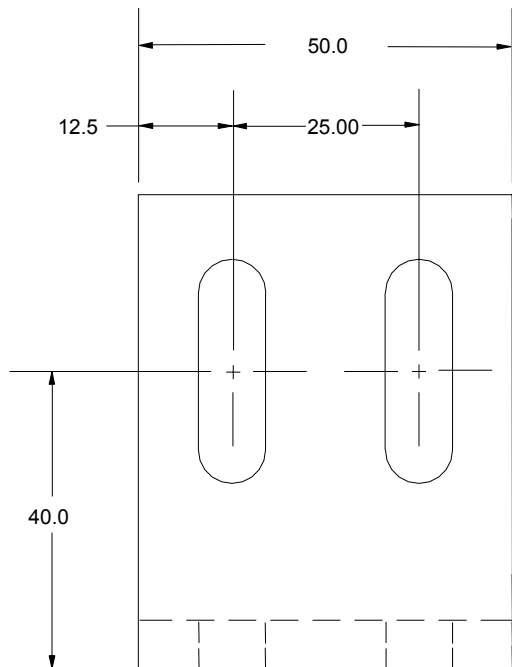
EXCEPT AS NOTED TOLERANCES SHALL BE:
1 PLACE FABRICATION ± 1.5
1 PLACE MACHINING ± 0.3
2 PLACE BETWEEN HOLES ± 0.13
MATERIAL: STEEL ASTM A-36
SEE PAGE B-1.1 FOR GLOBAL MATERIALS CHART

BLACK OXIDE
OR PAINT



9.0 x 30.0
2 SLOTS - 2 PLACES

| NAAMS CODE | kg/m | Length mm | Weight kg |
|------------|------|-----------|-----------|
| ASA6040 | 5.95 | 50 | 0.30 |



MAT'L: STL ANGLE $2\frac{1}{2}'' \times 2\frac{1}{2}'' \times \frac{1}{4}'' \times 50.0$ mm LG OR
BENT STRAP $\frac{1}{4}'' \times 2'' \times 114.0$ mm LG

B

A

SWITCH ADAPTOR BRACKETS ASA7050

EXCEPT AS NOTED TOLERANCES SHALL BE:

1 PLACE FABRICATION ± 1.5

1 PLACE MACHINING ± 0.3

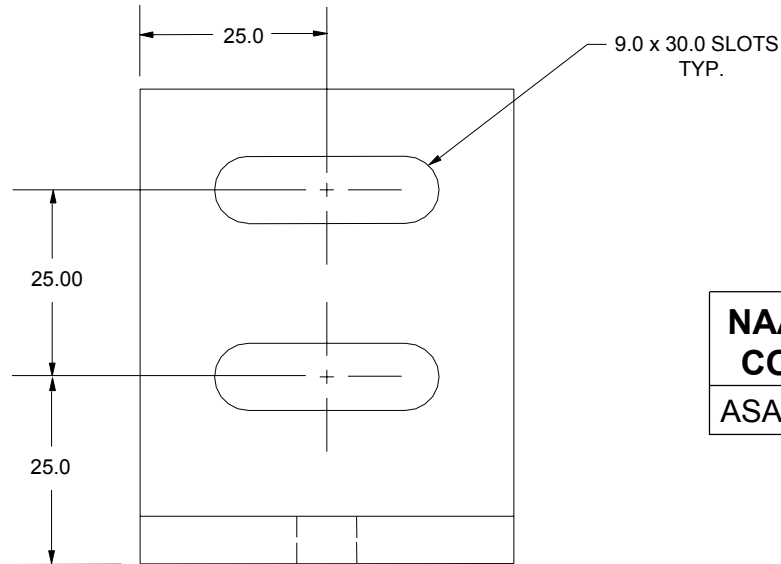
2 PLACE BETWEEN HOLES ± 0.13

MATERIAL: STEEL ASTM A-36

SEE PAGE B-1.1 FOR GLOBAL MATERIALS CHART

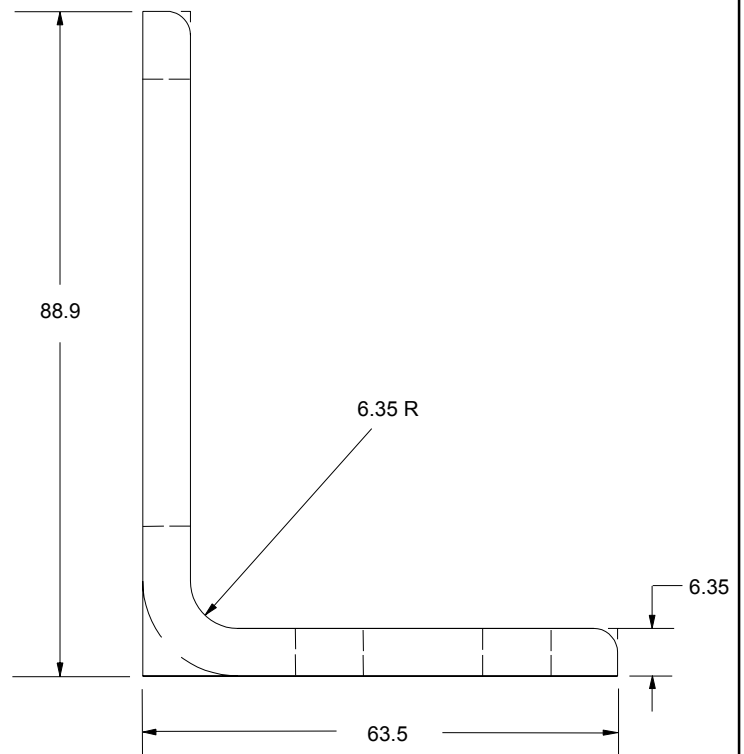
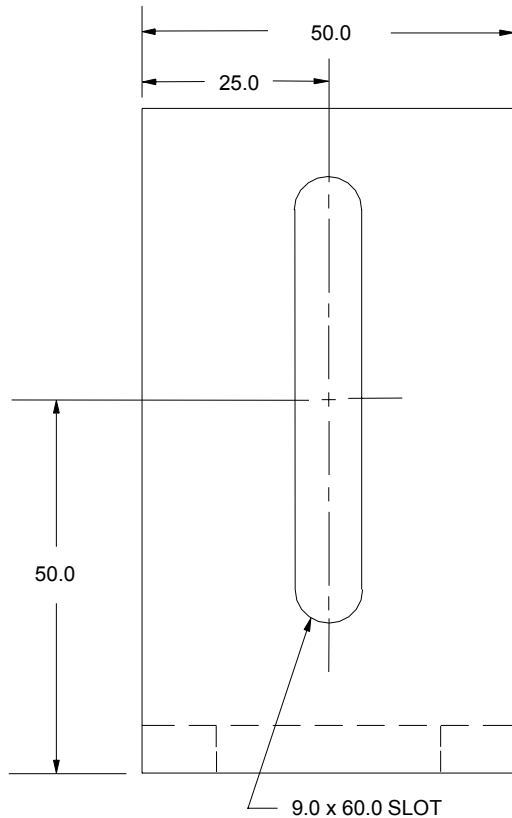
BLACK OXIDE
OR PAINT

B



| NAAMS CODE | kg/m | Length mm | Weight kg |
|------------|------|-----------|-----------|
| ASA7050 | 7.29 | 50 | 0.36 |

A



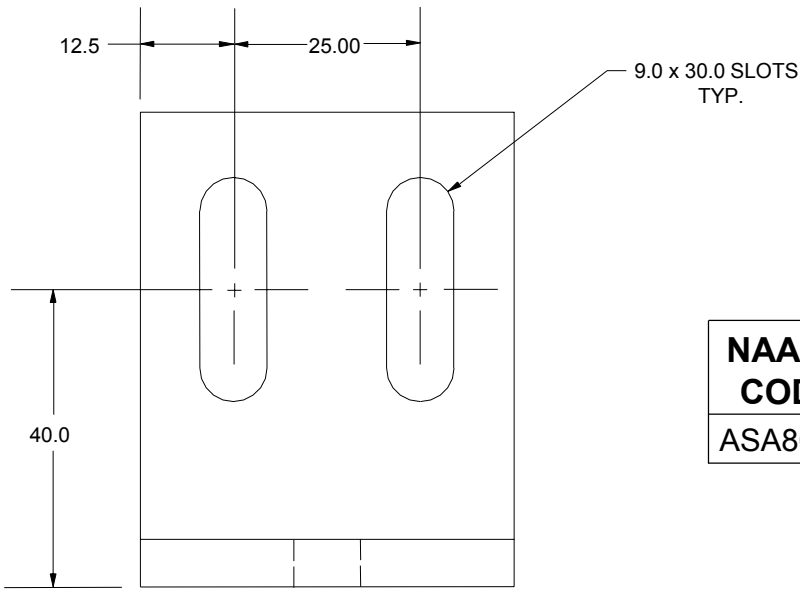
MAT'L: STL ANGLE 3½" x 2½" x ¼" x 50.0 mm LG OR
BENT STRAP ¼" x 2" x 140.0 mm LG

SWITCH ADAPTOR BRACKETS ASA8050

EXCEPT AS NOTED TOLERANCES SHALL BE:
 1 PLACE FABRICATION ± 1.5
 1 PLACE MACHINING ± 0.3
 2 PLACE BETWEEN HOLES ± 0.13
 MATERIAL: STEEL ASTM A-36
 SEE PAGE B-1.1 FOR GLOBAL MATERIALS CHART

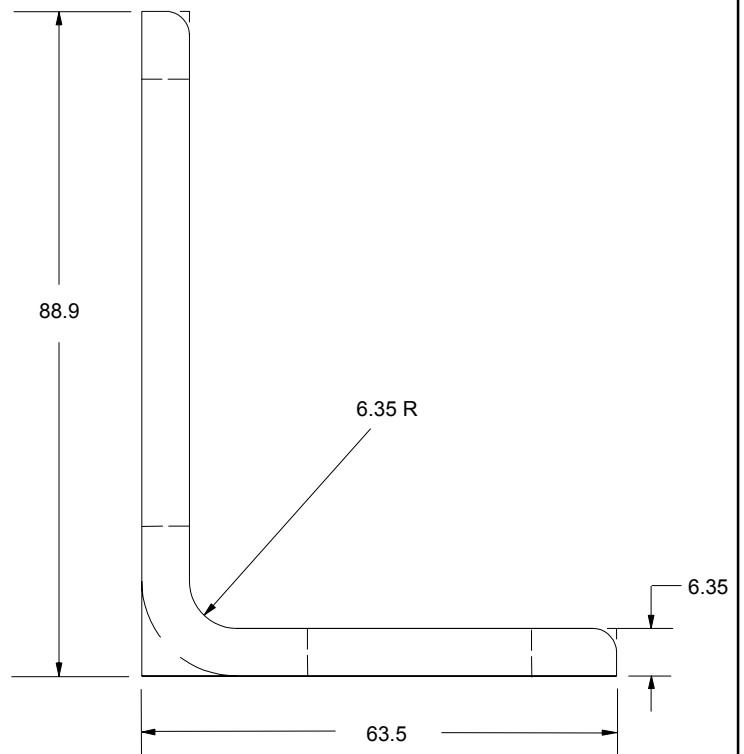
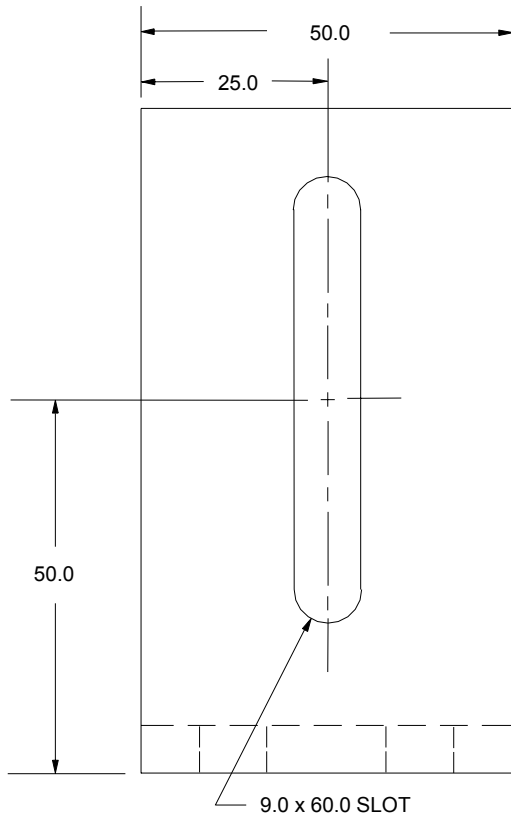
BLACK OXIDE
OR PAINT

B



| NAAMS CODE | kg/m | Length mm | Weight kg |
|------------|------|-----------|-----------|
| ASA8050 | 7.29 | 50 | 0.36 |

A



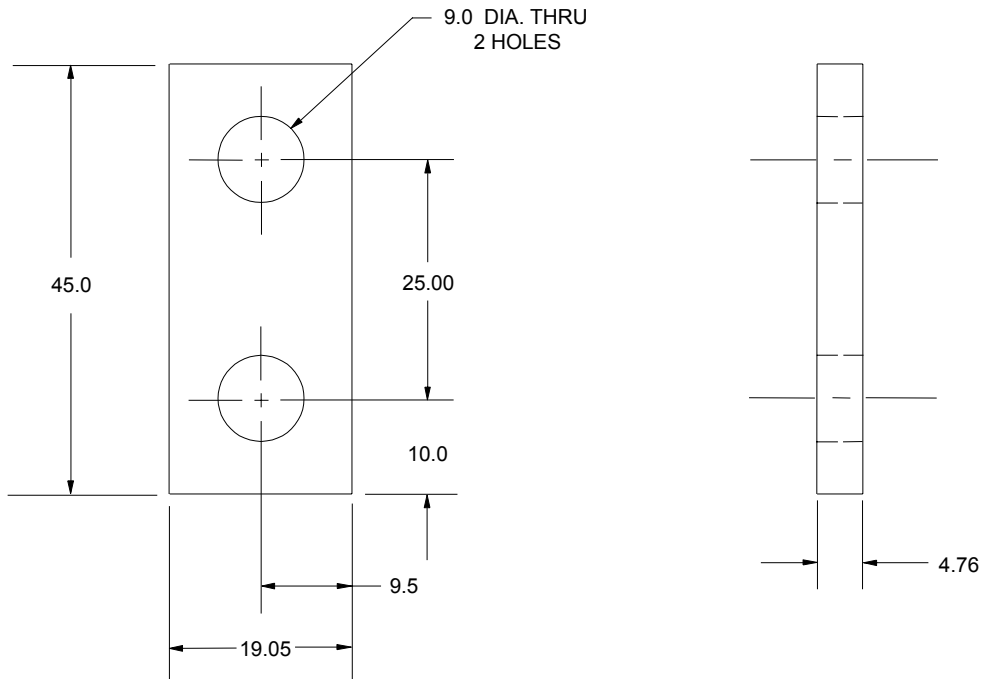
MAT'L: STL ANGLE 3 1/2" x 2 1/2" x 1/4" x 50.0 mm LG OR
 BENT STRAP 1/4" x 2" x 140.0 mm LG

SWITCH ADAPTOR BRACKET PLATE ASA9000

EXCEPT AS NOTED TOLERANCES SHALL BE:
 1 PLACE FABRICATION ± 1.5
 1 PLACE MACHINING ± 0.3
 2 PLACE BETWEEN HOLES ± 0.13
 MATERIAL: STEEL ASTM A-36
 SEE PAGE B-1.1 FOR GLOBAL MATERIALS CHART

BLACK OXIDE
OR PAINT

B



MAT'L: $\frac{3}{16}$ " x $\frac{3}{4}$ " x 45.0 mm LG

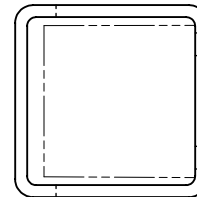
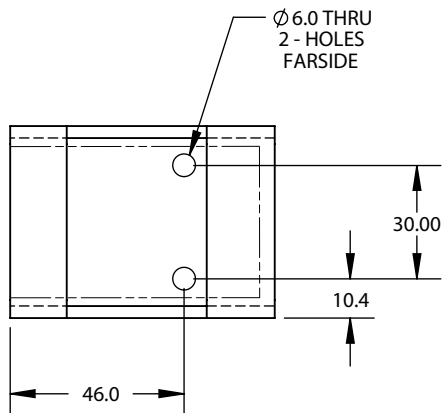
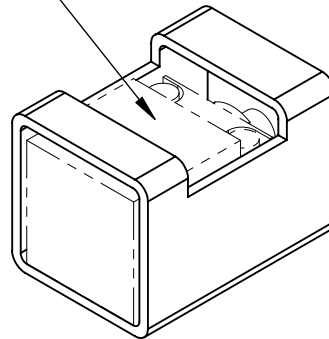
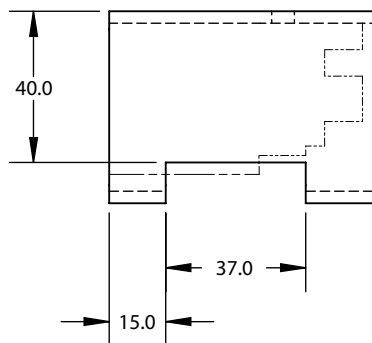
| NAAMS CODE | kg/m | Length mm | Weight kg |
|------------|------|-----------|-----------|
| ASA9000 | 0.71 | 45 | 0.03 |

A

SWITCH COVER ASC0001

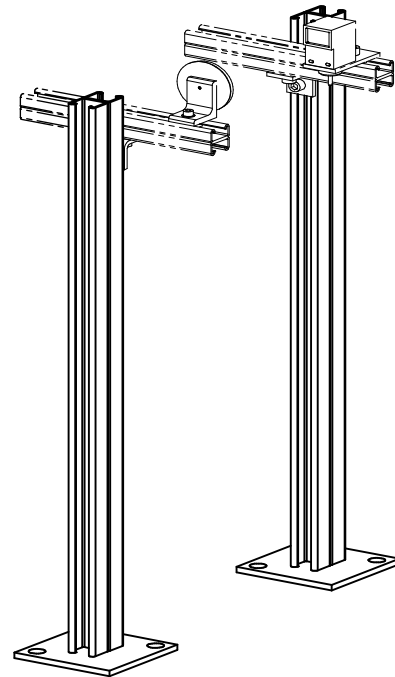
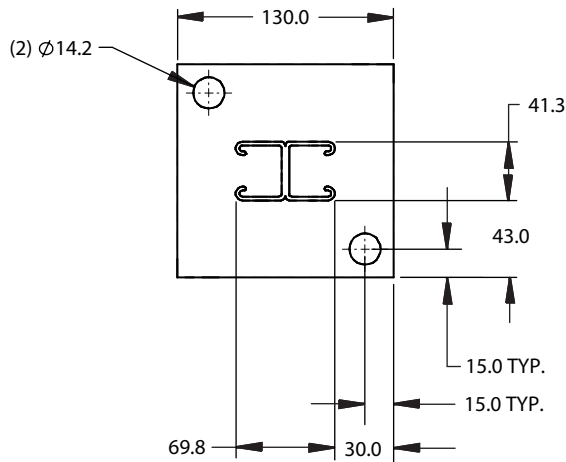
EXCEPT AS NOTED TOLERANCES SHALL BE:
1 PLACE MACHINING ± 0.3
1 PLACE FABRICATION ± 1.5
2 PLACE ± 0.08 BETWEEN MACHINED SURFACES
 ± 0.13 TO SCREW HOLES, NON ACCUMULATIVE

40mm Cube Switch – End Sensing
(REF)



1 REQ'D – STL. TUBING STK: 2 X 2 X 0.125 W/T X 70 MM

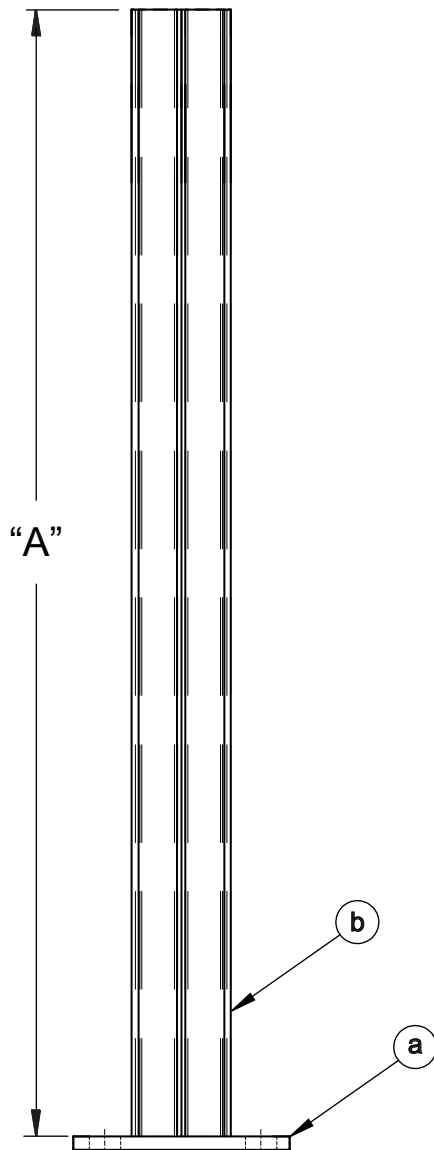
SWITCH MOUNTING POST



TYPICAL ASSEMBLY VIEW
EXAMPLE

WELDED CONSTRUCTION

- a** 1-REQ'D - 3/8" x 5" x 130mm - ASTM A-36 HRS
- b** 1-REQ'D - STEEL BACK TO BACK FRAMING CHANNEL
1 5/8 x 2 3/4" x 12 GAUGE x "A" LG.

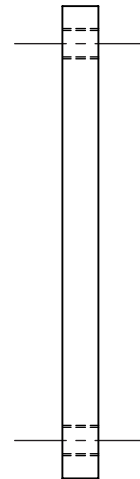
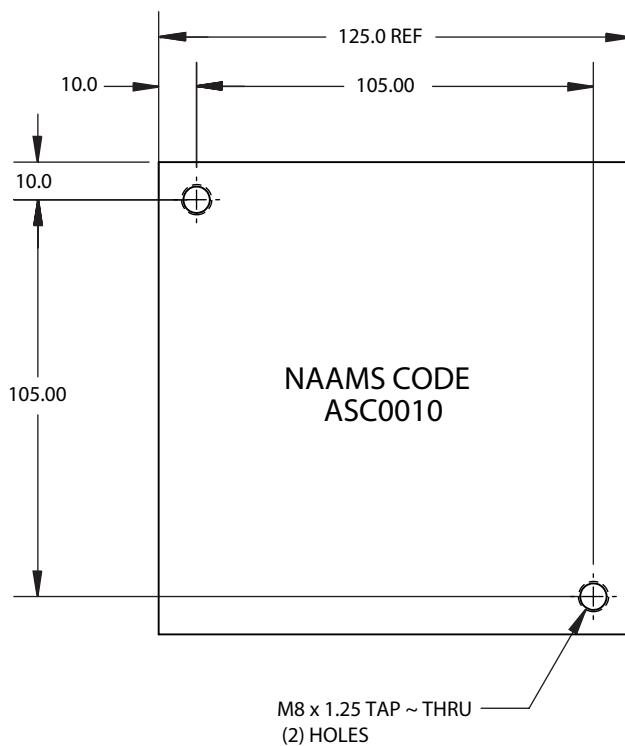


| POST HEIGHT "A" | NAAMS CODE |
|-----------------|------------|
| 1000 | ASD1000 |
| 1500 | ASD1500 |

SAFETY PIN TAP PAD ASC0010

EXCEPT AS NOTED TOLERANCES SHALL BE:

- 1 PLACE MACHINING ± 0.3
- 1 PLACE FABRICATION ± 1.5
- 2 PLACE ± 0.08 BETWEEN MACHINED SURFACES
 ± 0.13 TO SCREW HOLES, NON ACCUMULATIVE



1-REQ'D - SAE 1020 - 3/8" x 5" x 125.0 mm

SAFETY PIN MOUNTING BRACKET - ASC0011

GLOBAL STANDARD COMPONENTS

NAAMS

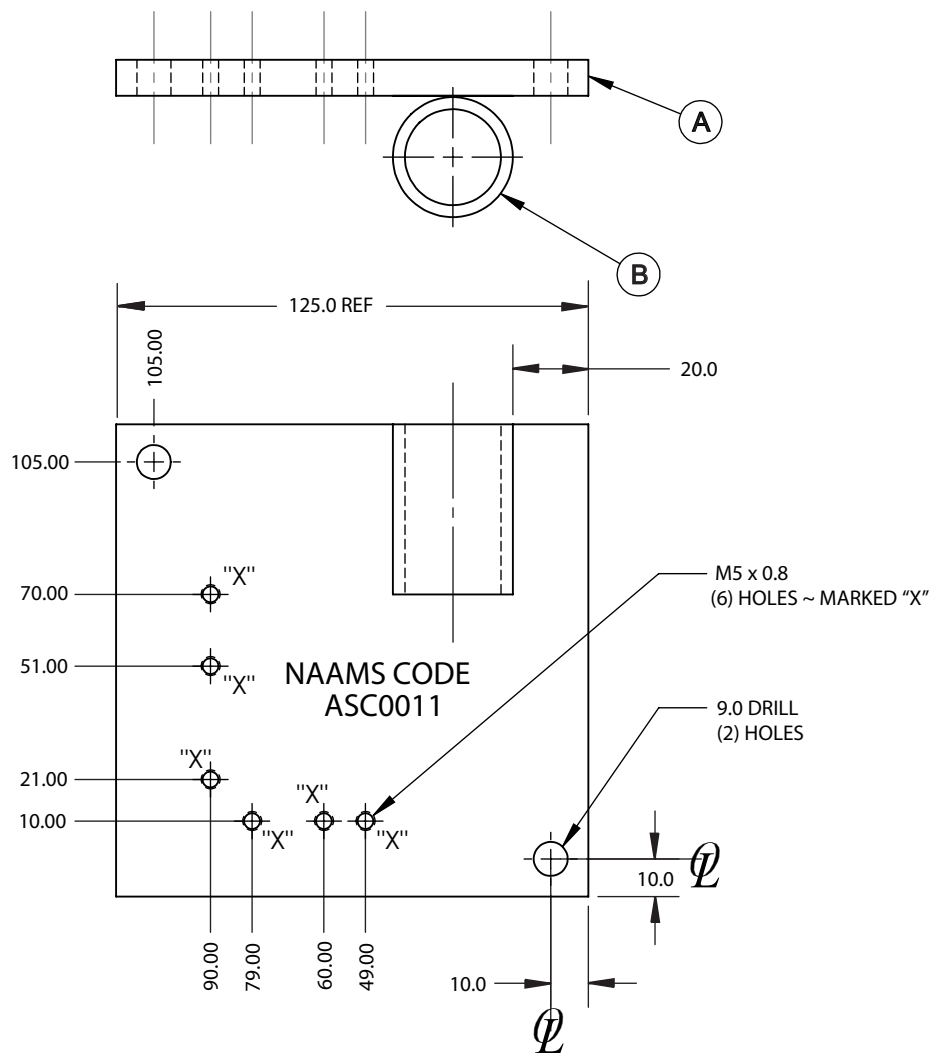


Assembly

03/30/12

EXCEPT AS NOTED TOLERANCES SHALL BE:

- 1 PLACE MACHINING ± 0.3
- 1 PLACE FABRICATION ± 1.5
- 2 PLACE ± 0.08 BETWEEN MACHINED SURFACES
 ± 0.13 TO SCREW HOLES, NON ACCUMULATIVE



WELDED CONSTRUCTION - PAINT SAFETY YELLOW

- A** 1-REQ'D - 3/8" x 5" x 125.0mm - SAE 1018
- B** 1-REQ'D - 1-1/4" OD x 1" ID x 45.0 mm - ASTM A 513 TYPE 5 DOM TUBING

SAFETY PIN

ASC0145, ASC0195, ASC0245 TM
 ASC0195, ASC0345

GLOBAL STANDARD COMPONENTS



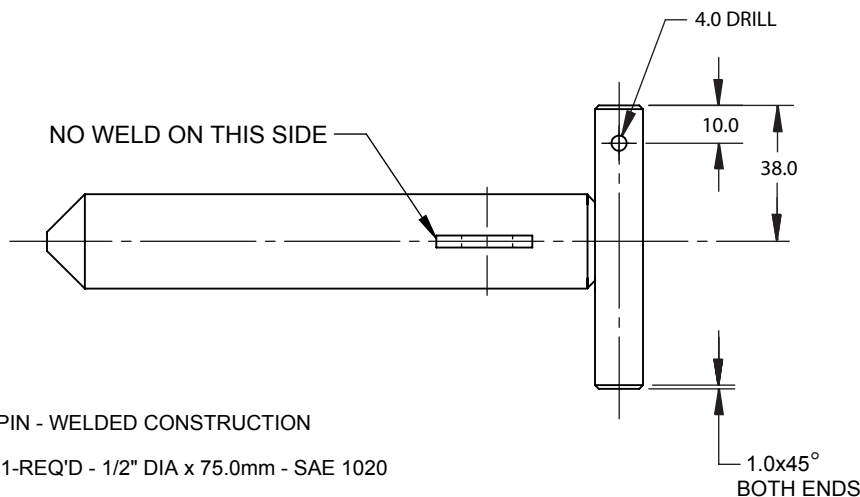
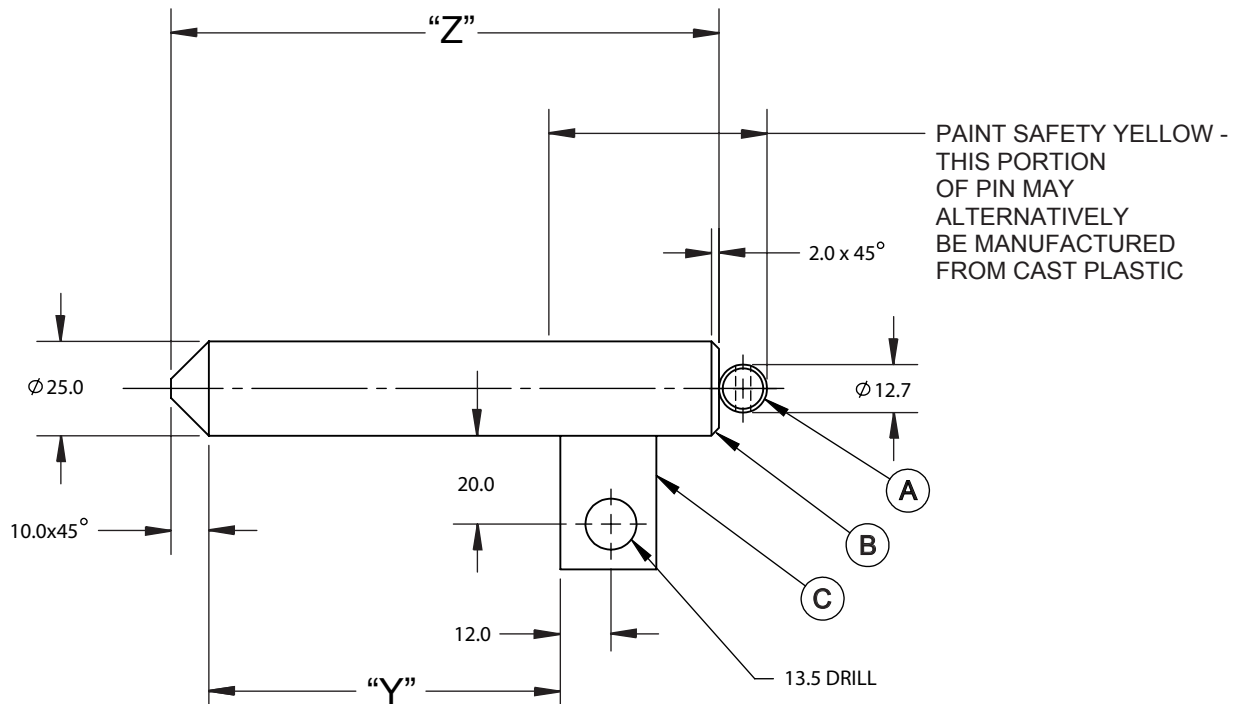
Assembly

03/30/12

EXCEPT AS NOTED TOLERANCES SHALL BE:

- 1 PLACE MACHINING ± 0.3
- 1 PLACE FABRICATION ± 1.5
- 2 PLACE ± 0.08 BETWEEN MACHINED SURFACES
 ± 0.13 TO SCREW HOLES, NON ACCUMULATIVE

| NAAMS CODE | "Y" | "Z" |
|------------|-----|-------|
| ASC0145 | 100 | 145.0 |
| ASC0195 | 150 | 195.0 |
| ASC0245 | 200 | 245.0 |
| ASC0295 | 250 | 295.0 |
| ASC0345 | 300 | 345.0 |



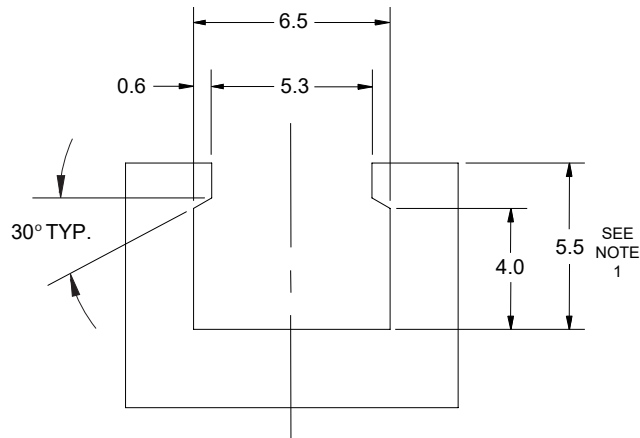
PIN - WELDED CONSTRUCTION

- (A) 1-REQ'D - 1/2" DIA x 75.0mm - SAE 1020
- (B) 1-REQ'D - 1" DIA x "Z" - SAE 4140
- (C) 1-REQ'D - 1/8" x 1" x 32.0mm - SAE 1020

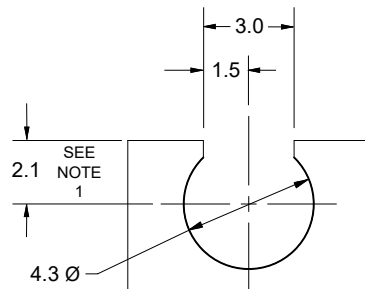
12,000 lbf (5443 kgf) STATIC SINGLE SHEAR STRENGTH
 (INCLUDING A 3:1 SAFETY FACTOR)

SENSOR GROOVE STANDARDS

EXCEPT AS NOTED TOLERANCES SHALL BE:
1 PLACE EXTRUSION ± 0.6
1 PLACE MACHINING ± 0.3



T STYLE GROVE
ASG 0100



ROUND STYLE GROVE
ASG 0200

NOTES:

1. DIMENSION SHOWN IS TYPICAL BUT CAN BE ADJUSTED TO OPTIMIZE SENSING LOCATION FOR SWITCHES DEPENDING ON PRODUCT DESIGN.