

CONSTRUCTION STEEL AND ALUMINUM STOCK SIZE INDEX

PAGE	DATE	DESCRIPTION
B-1	08/22/08	Construction Steel and Aluminum Stock Size Index
B-1.1	08/22/08	Material Cross-Reference Table
B-2	08/03/07	Recommended Cold Rolled Steel Stock Sizes
B-3	08/03/07	Recommended Hot Rolled Steel Stock Sizes
B-4	02/13/08	Recommended Steel Structural Angle Sizes
B-5	08/03/07	Recommended Steel Channel Sizes
B-6	08/03/07	Recommended Steel Tube Sizes
B-7	09/19/96	Recommended Aluminum Stock Sizes
B-8	02/01/99	Special Steel Shapes
B-9	07/06/06	Recommended Cold Rolled Metric Steel Stock Sizes
B-10	07/06/06	Recommended Hot Rolled Metric Steel Stock Sizes
B-11	12/19/07	Recommended Metric Steel Angle Sizes
B-12	11/13/07	Recommended Metric Steel Tubing Sizes
B-13	07/06/06	Recommended Metric Aluminum Stock Sizes

MATERIAL CROSS- REFERENCE TABLE

The Material Cross-Reference Table is in Excel format.
You may access it by Clicking the Hyperlink below.

<http://www.a-sp.org/Standards/tables/B-1-1.xls>

B

A

RECOMMENDED COLD ROLLED STEEL STOCK SIZES SAE 1018 / AISI 1018

GLOBAL STANDARD COMPONENTS



Assembly

08/03/07

A

UNIT WT.			UNIT WT.			UNIT WT.		
SIZE	kg/m	lb/ft	SIZE	kg/m	lb/ft	SIZE	kg/m	lb/ft
1/8 x 1/4	0.16	0.11	1/2 x 1-1/2	3.80	2.56	1 x 3-1/2	17.7	11.9
1/8 x 1/2	0.32	0.21	1/2 x 1-3/4	4.44	2.98	1 x 4	20.3	13.6
1/8 x 3/4	0.48	0.32	1/2 x 2	5.07	3.41	1 x 4-1/2	22.8	15.3
1/8 x 1	0.63	0.43	1/2 x 2-1/2	6.34	4.26	1 x 5	25.4	17.0
1/8 x 1-1/4	0.79	0.53	1/2 x 3	7.61	5.11	1 x 5-1/2	27.9	18.7
1/8 x 1-1/2	0.95	0.64	1/2 x 3-1/2	8.87	5.96	1 x 6	30.4	20.4
1/8 x 1-3/4	1.11	0.75	1/2 x 4	10.1	6.82	1 x 7	35.5	23.9
1/8 x 2	1.27	0.85	1/2 x 4-1/2	11.4	7.67	1 x 8	40.6	27.3
3/16 x 1/2	0.48	0.32	1/2 x 5	12.7	8.52	1-1/4 x 1-1/4	7.92	5.32
3/16 x 3/4	0.71	0.48	1/2 x 5-1/2	13.9	9.37	1-1/4 x 1-1/2	9.51	6.39
3/16 x 1	0.95	0.64	1/2 x 6	15.2	10.2	1-1/4 x 1-3/4	11.1	7.45
3/16 x 1-1/4	1.19	0.80	1/2 x 8	20.3	13.6	1-1/4 x 2	12.7	8.52
3/16 x 1-1/2	1.43	0.96	5/8 x 5/8	1.98	1.33	1-1/4 x 2-1/2	15.8	10.6
3/16 x 1-3/4	1.66	1.12	5/8 x 3/4	2.38	1.60	1-1/4 x 3	19.0	12.8
3/16 x 2	1.90	1.28	5/8 x 1	3.17	2.13	1-1/4 x 3-1/2	22.2	14.9
1/4 x 1/4	0.32	0.21	5/8 x 1-1/4	3.96	2.66	1-1/4 x 4	25.4	17.0
1/4 x 1/2	0.63	0.43	5/8 x 1-1/2	4.75	3.20	1-1/4 x 4-1/2	28.5	19.2
1/4 x 3/4	0.95	0.64	5/8 x 1-3/4	5.55	3.73	1-1/4 x 5	31.7	21.3
1/4 x 1	1.27	0.85	5/8 x 2	6.34	4.26	1-1/4 x 5-1/2	34.9	23.4
1/4 x 1-1/4	1.58	1.07	5/8 x 2-1/2	7.92	5.32	1-1/4 x 6	38.0	25.6
1/4 x 1-1/2	1.90	1.28	5/8 x 3	9.51	6.39	1-1/4 x 7	44.4	29.8
1/4 x 1-3/4	2.22	1.49	5/8 x 3-1/2	11.1	7.45	1-1/4 x 8	50.7	34.1
1/4 x 2	2.54	1.70	5/8 x 4	12.7	8.52	1-1/2 x 1-1/2	11.4	7.67
1/4 x 2-1/2	3.17	2.13	5/8 x 4-1/2	14.3	9.58	1-1/2 x 1-3/4	13.3	8.95
1/4 x 3	3.80	2.56	5/8 x 5	15.8	10.6	1-1/2 x 2	15.2	10.2
1/4 x 3-1/2	4.44	2.98	5/8 x 5-1/2	17.4	11.7	1-1/2 x 2-1/2	19.0	12.8
1/4 x 4	5.07	3.41	5/8 x 6	19.0	12.8	1-1/2 x 3	22.8	15.3
1/4 x 5	6.34	4.26	5/8 x 8	25.4	17.0	1-1/2 x 3-1/2	26.6	17.9
1/4 x 5-1/2	6.97	4.69	3/4 x 3/4	2.85	1.92	1-1/2 x 4	30.4	20.4
1/4 x 6	7.61	5.11	3/4 x 1	3.80	2.56	1-1/2 x 4-1/2	34.2	23.0
3/8 x 3/8	0.71	0.48	3/4 x 1-1/4	4.75	3.20	1-1/2 x 5	38.0	25.6
3/8 x 1/2	0.95	0.64	3/4 x 1-1/2	5.70	3.83	1-1/2 x 6	45.6	30.7
3/8 x 3/4	1.43	0.96	3/4 x 1-3/4	6.66	4.47	1-1/2 x 7	53.2	35.8
3/8 x 1	1.90	1.28	3/4 x 2	7.61	5.11	1-1/2 x 8	60.8	40.9
3/8 x 1-1/4	2.38	1.60	3/4 x 2-1/2	9.51	6.39	1-3/4 x 1-3/4	15.5	10.4
3/8 x 1-1/2	2.85	1.92	3/4 x 3	11.4	7.67	1-3/4 x 2	17.7	11.9
3/8 x 1-3/4	3.33	2.24	3/4 x 3-1/2	13.3	8.95	1-3/4 x 2-1/2	22.2	14.9
3/8 x 2	3.80	2.56	3/4 x 4	15.2	10.2	1-3/4 x 3	26.6	17.9
3/8 x 2-1/2	4.75	3.20	3/4 x 4-1/2	17.1	11.5	1-3/4 x 3-1/2	31.1	20.9
3/8 x 3	5.70	3.83	3/4 x 5	19.0	12.8	1-3/4 x 4	35.5	23.9
3/8 x 3-1/2	6.66	4.47	3/4 x 5-1/2	20.9	14.1	1-3/4 x 4-1/2	39.9	26.8
3/8 x 4	7.61	5.11	3/4 x 6	22.8	15.3	1-3/4 x 5	44.4	29.8
3/8 x 4-1/2	8.56	5.75	3/4 x 7	26.6	17.9	1-3/4 x 5-1/2	48.8	32.8
3/8 x 5	9.51	6.39	3/4 x 8	30.4	20.4	1-3/4 x 6	53.2	35.8
3/8 x 5-1/2	10.5	7.03	1 x 1	5.07	3.41	2 x 2	20.3	13.6
3/8 x 6	11.4	7.67	1 x 1-1/4	6.34	4.26	2 x 2-1/2	25.4	17.0
1/2 x 1/2	1.27	0.85	1 x 1-1/2	7.61	5.11	2 x 3	30.4	20.4
1/2 x 3/4	1.90	1.28	1 x 1-3/4	8.87	5.96	2 x 3-1/2	35.5	23.9
1/2 x 1	2.54	1.70	1 x 2	10.1	6.82	2 x 4	40.6	27.3
1/2 x 1-1/4	3.17	2.13	1 x 2-1/2	12.7	8.52	2 x 5	50.7	34.1
			1 x 3	15.2	10.2	2 x 6	60.8	40.9

RECOMMENDED HOT ROLLED STEEL STOCK SIZES ASTM A-36

GLOBAL STANDARD COMPONENTS



Assembly

08/03/07

A

UNIT WT.			UNIT WT.			UNIT WT.		
SIZE	kg/m	lb/ft	SIZE	kg/m	lb/ft	SIZE	kg/m	lb/ft
1/4 x 1	1.27	0.85	3/4 x 1	3.80	2.56	1-1/2 x 6	45.6	30.7
1/4 x 1-1/4	1.58	1.07	3/4 x 1-1/4	4.75	3.20	1-1/2 x 7	53.2	35.8
1/4 x 1-1/2	1.90	1.28	3/4 x 1-1/2	5.70	3.83	1-1/2 x 8	60.8	40.9
1/4 x 1-3/4	2.22	1.49	3/4 x 1-3/4	6.66	4.47	1-3/4 x 1-3/4	15.5	10.4
1/4 x 2	2.54	1.70	3/4 x 2	7.61	5.11	1-3/4 x 2	17.7	11.9
1/4 x 2-1/2	3.17	2.13	3/4 x 2-1/2	9.51	6.39	1-3/4 x 2-1/2	22.2	14.9
1/4 x 3	3.80	2.56	3/4 x 3	11.4	7.67	1-3/4 x 3	26.6	17.9
1/4 x 3-1/2	4.44	2.98	3/4 x 4	15.2	10.2	1-3/4 x 4	35.5	23.9
1/4 x 4	5.07	3.41	3/4 x 4-1/2	17.1	11.5	1-3/4 x 5	44.4	29.8
1/4 x 4-1/2	5.70	3.83	3/4 x 5	19.0	12.8	1-3/4 x 6	53.2	35.8
1/4 x 5	6.34	4.26	3/4 x 5-1/2	20.9	14.1	2 x 2	20.3	13.6
1/4 x 6	7.61	5.11	3/4 x 6	22.8	15.3	2 x 2-1/2	25.4	17.0
1/4 x 7	8.87	5.96	3/4 x 7	26.6	17.9	2 x 3	30.4	20.4
1/4 x 8	10.1	6.82	3/4 x 8	30.4	20.4	2 x 3-1/2	35.5	23.9
3/8 x 1	1.90	1.28	1 x 1	5.07	3.41	2 x 4	40.6	27.3
3/8 x 1-1/4	2.38	1.60	1 x 1-1/4	6.34	4.26	2 x 5	50.7	34.1
3/8 x 1-1/2	2.85	1.92	1 x 1-1/2	7.61	5.11	2 x 6	60.8	40.9
3/8 x 1-3/4	3.33	2.24	1 x 1-3/4	8.87	5.96	2-1/2 x 2-1/2	31.7	21.3
3/8 x 2	3.80	2.56	1 x 2	10.1	6.82	2-1/2 x 3	38.0	25.6
3/8 x 2-1/2	4.75	3.20	1 x 2-1/2	12.7	8.52	2-1/2 x 3-1/2	44.4	29.8
3/8 x 3	5.70	3.83	1 x 3	15.2	10.2	2-1/2 x 4	50.7	34.1
3/8 x 3-1/2	6.66	4.47	1 x 3-1/2	17.7	11.9	3 x 3	45.6	30.7
3/8 x 4	7.61	5.11	1 x 4	20.3	13.6	3-1/2 x 3-1/2	62.1	41.7
3/8 x 4-1/2	8.56	5.75	1 x 4-1/2	22.8	15.3	4 x 4	81.1	54.5
3/8 x 5	9.51	6.39	1 x 5	25.4	17.0			
3/8 x 6	11.4	7.67	1 x 5-1/2	27.9	18.7			
3/8 x 7	13.3	8.95	1 x 6	30.4	20.4			
3/8 x 8	15.2	10.2	1 x 7	35.5	23.9			
1/2 x 1	2.54	1.70	1 x 8	40.6	27.3			
1/2 x 1-1/4	3.17	2.13	1-1/4 x 1-1/2	9.51	6.39			
1/2 x 1-1/2	3.80	2.56	1-1/4 x 1-3/4	11.1	7.45			
1/2 x 1-3/4	4.44	2.98	1-1/4 x 2	12.7	8.52			
1/2 x 2	5.07	3.41	1-1/4 x 2-1/2	15.8	10.6			
1/2 x 2-1/2	6.34	4.26	1-1/4 x 3	19.0	12.8			
1/2 x 3	7.61	5.11	1-1/4 x 3-1/2	22.2	14.9			
1/2 x 3-1/2	8.87	5.96	1-1/4 x 4	25.4	17.0			
1/2 x 4	10.1	6.82	1-1/4 x 4-1/2	28.5	19.2			
1/2 x 4-1/2	11.4	7.67	1-1/4 x 5	31.7	21.3			
1/2 x 5	12.7	8.52	1-1/4 x 6	38.0	25.6			
1/2 x 6	15.2	10.2	1-1/4 x 7	44.4	29.8			
1/2 x 7	17.7	11.9	1-1/4 x 8	50.7	34.1			
1/2 x 8	20.3	13.6	1-1/2 x 1-1/2	11.4	7.67			
5/8 x 1	3.17	2.13	1-1/2 x 1-3/4	13.3	8.95			
5/8 x 1-1/2	4.75	3.20	1-1/2 x 2	15.2	10.2			
5/8 x 2	6.34	4.26	1-1/2 x 2-1/2	19.0	12.8			
5/8 x 2-1/2	7.92	5.32	1-1/2 x 3	22.8	15.3			
5/8 x 3	9.51	6.39	1-1/2 x 3-1/2	26.6	17.9			
5/8 x 4	12.7	8.52	1-1/2 x 4	30.4	20.4			
5/8 x 5	15.8	10.6	1-1/2 x 4-1/2	34.2	23.0			
5/8 x 6	19.0	12.8	1-1/2 x 5	38.0	25.6			

RECOMMENDED STEEL STRUCTURAL ANGLE SIZES™ ASTM A-36

GLOBAL STANDARD COMPONENTS



Assembly

02/13/08

B

Leg	Leg	Thk.	UNIT WT.	
			kg/m	lb/ft
1/2 x 1/2	1/8	0.55	0.37	
3/4 x 3/4	1/8	0.87	0.58	
1 x 1	1/8	1.19	0.80	
1-1/4 x 1-1/4	1/4	2.85	1.91	
1-1/2 x 1-1/2	1/4	3.48	2.34	
1-3/4 x 1-3/4	1/4	4.11	2.76	
2 x 1-1/2	1/4	4.11	2.76	
2 x 2	1/4	4.75	3.19	
2 x 2	3/8	6.84	4.60	
2-1/2 x 1-1/2	1/4	4.75	3.19	
2-1/2 x 2	1/4	5.38	3.62	
2-1/2 x 2-1/2	1/4	5.95	4.00	
2-1/2 x 2-1/2	3/8	8.78	5.90	
2-1/2 x 2-1/2	1/2	11.46	7.70	
3 x 2	1/4	5.95	4.00	
3 x 2	3/8	8.78	5.90	
3 x 2	1/2	11.46	7.70	
3 x 2-1/2	1/4	6.70	4.50	
3 x 2-1/2	3/8	9.82	6.60	
3 x 2-1/2	1/2	12.65	8.50	
3 x 3	1/4	7.29	4.90	
3 x 3	3/8	10.71	7.20	
3 x 3	1/2	13.99	9.40	
3-1/2 x 2-1/2	1/4	7.29	4.90	
3-1/2 x 2-1/2	3/8	10.71	7.20	
3-1/2 x 3-1/2	1/4	8.48	5.70	
3-1/2 x 3-1/2	3/8	12.65	8.50	
3-1/2 x 3-1/2	1/2	16.52	11.10	

Leg	Leg	Thk.	UNIT WT.	
			kg/m	lb/ft
4 x 3	1/4	8.48	5.70	
4 x 3	3/8	12.65	8.50	
4 x 3	1/2	16.52	11.10	
4 x 3-1/2	1/4	9.23	6.20	
4 x 3-1/2	1/2	17.71	11.90	
4 x 4	1/4	9.82	6.60	
4 x 4	3/8	14.43	9.70	
4 x 4	1/2	19.05	12.80	
4 x 4	3/4	27.40	18.50	
5 x 3	1/4	9.82	6.60	
5 x 3	3/8	14.43	9.70	
5 x 3	1/2	19.05	12.80	
5 x 5	3/8	18.30	12.30	
5 x 5	1/2	24.10	16.20	
6 x 4	3/8	18.30	12.30	
6 x 4	1/2	24.10	16.20	
6 x 4	3/4	35.11	23.60	
6 x 6	3/8	22.02	14.80	
6 x 6	1/2	29.16	19.60	
6 x 6	3/4	42.70	28.70	
7 x 4	3/8	20.24	13.60	
7 x 4	1/2	26.63	17.90	
7 x 4	3/4	38.98	26.20	
8 x 4	1/2	29.16	19.60	
8 x 4	3/4	42.70	28.70	
8 x 8	1/2	39.28	26.40	
8 x 8	3/4	57.88	38.90	
8 x 8	1	75.88	51.00	

C

A

RECOMMENDED STEEL CHANNEL SIZES ASTM A-36

B

Size	Flange Width	Web Thk.	UNIT WT.	
			kg/m	lb/ft
C3	1.410	0.170	6.10	4.10
C3	1.498	0.258	7.40	5.00
C3	1.596	0.356	8.90	6.00
C4	1.584	0.184	8.00	5.40
C4	1.647	0.247	9.30	6.25
C4	1.721	0.321	10.80	7.25
C5	1.750	0.190	10.00	6.70
C5	1.885	0.325	13.40	9.00
C6	1.920	0.200	12.20	8.20
C6	2.034	0.314	15.60	10.50
C6	2.157	0.437	19.30	13.00
C8	2.260	0.220	17.10	11.50
C10	2.600	0.240	22.80	15.30
C10	2.739	0.379	29.80	20.00
C10	2.886	0.526	37.20	25.00
C10	3.033	0.673	44.60	30.00
C12	2.942	0.282	30.80	20.70
C12	3.047	0.387	37.20	25.00
C12	3.170	0.510	44.60	30.00

Size	Flange Width	Web Thk.	UNIT WT.	
			kg/m	lb/ft
MC3	1.938	0.312	10.6	7.1
MC4	2.500	0.500	20.5	13.8
MC6	2.497	0.310	17.9	12.0
MC6	3.500	0.340	22.8	15.3
MC6	3.000	0.375	24.3	16.3
MC8	1.875	0.179	12.6	8.5
MC8	2.987	0.353	27.8	18.7
MC8	3.502	0.427	33.9	22.8
MC10	1.127	0.152	9.7	6.5
MC10	1.500	0.170	12.5	8.4
MC12	1.500	0.190	15.8	10.6

A

RECOMMENDED STEEL TUBE SIZES

GLOBAL STANDARD COMPONENTS



Assembly

08/03/07

A

SQUARE TUBE SIZES

Size	Gauge	Wall	UNIT WT.		Mat'l
			kg/m	lb/ft	
1/2	16	0.065	0.52	0.35	1
3/4	11	0.120	1.34	0.90	1
1	11	0.120	1.95	1.31	1
1-1/4	11	0.120	2.55	1.71	1
1-1/2	11	0.120	3.16	2.12	1
1-1/2	3/16	0.188	4.53	3.04	1
1-1/2	1/4	0.250	5.51	3.71	1
2	1/8	0.125	4.54	3.05	1
2	3/16	0.188	6.42	4.32	2
2	1/4	0.250	8.05	5.41	2
2-1/2	3/16	0.188	8.32	5.59	2
2-1/2	1/4	0.250	10.58	7.11	2
3	1/8	0.125	7.07	4.75	2
3	3/16	0.188	10.22	6.87	2
3	1/4	0.250	13.11	8.81	2
3-1/2	3/16	0.188	12.12	8.15	2
3-1/2	1/4	0.250	15.64	10.51	2
4	3/16	0.188	14.02	9.42	2
4	1/4	0.250	18.17	12.21	2
4	3/8	0.375	25.70	17.27	2
4	1/2	0.500	32.18	21.63	2
5	1/4	0.250	23.23	15.62	2
5	1/2	0.500	42.31	28.43	2
6	1/4	0.250	28.30	19.02	2
6	1/2	0.500	52.43	35.24	2
8	1/4	0.250	38.42	25.82	2
8	1/2	0.500	72.69	48.85	2
10	1/4	0.250	48.55	32.63	2
10	1/2	0.500	92.94	62.46	2
12	1/4	0.250	56.68	39.43	2
12	1/2	0.500	113.19	76.07	2

RECTANGULAR TUBE SIZES

Size	Gauge	Wall	UNIT WT.		Mat'l
			kg/m	lb/ft	
1-1/2 x 1	16	0.07	1.56	1.05	1
1-1/2 x 1	11	0.12	2.73	1.83	1
2 x 1	16	0.07	1.83	1.23	1
2 x 1	11	0.12	3.26	2.19	1
2 x 1-1/2	11	0.12	3.88	2.61	1
3 x 1	11	0.12	4.51	3.03	1
3 x 1-1/2	11	0.12	5.14	3.45	1
3 x 1-1/2	3/16	0.19	7.37	4.96	3
3 x 2	1/8	0.13	5.81	3.90	4
3 x 2	1/4	0.25	10.58	7.11	3
4 x 2	1/8	0.13	7.07	4.75	4
4 x 2	1/4	0.25	13.11	8.81	2
4 x 3	1/8	0.13	8.34	5.61	2
4 x 3	1/4	0.25	15.64	10.51	2
5 x 2	1/4	0.25	15.64	10.51	2
5 x 3	1/4	0.25	18.17	12.21	2
6 x 2	1/4	0.25	18.17	12.21	2
6 x 3	1/4	0.25	20.70	13.91	2
6 x 4	1/4	0.25	23.23	15.62	2
6 x 4	3/8	0.38	33.29	22.37	2
6 x 4	1/2	0.50	42.31	28.43	2
8 x 3	1/4	0.25	25.77	17.32	2
8 x 3	1/2	0.50	47.37	31.84	2
8 x 4	1/4	0.25	28.30	19.02	2
8 x 4	1/2	0.50	52.43	35.24	2
8 x 6	1/4	0.25	33.36	22.42	2
8 x 6	1/2	0.50	62.56	42.05	2
10 x 4	1/4	0.25	33.36	22.42	2
10 x 4	1/2	0.50	62.56	42.05	2
10 x 6	1/4	0.25	38.42	25.82	2
10 x 6	1/2	0.50	72.69	48.85	2
10 x 8	1/4	0.25	43.49	29.23	2
10 x 8	1/2	0.50	82.81	55.66	2
12 x 4	1/4	0.25	38.42	25.82	2
12 x 4	1/2	0.50	72.69	48.85	2
12 x 6	1/4	0.25	43.49	29.23	2
12 x 6	1/2	0.50	82.81	55.66	2
12 x 8	1/4	0.25	48.55	32.63	2
12 x 8	1/2	0.50	92.94	62.46	2

MATERIAL LEGEND:

- 1 - ASTM A-513
- 2 - ASTM A-500 GRADE 'B'
- 3 - A-500
- 4 - A-513

SEE PAGE B-1.1 FOR GLOBAL MATERIALS CHART

RECOMMENDED ALUMINUM STOCK SIZES



Assembly

09/19/96

RECOMMENDED BAR STOCK SIZES

Size	UNIT WT.		Alloy and Temper
	kg/m	lb/ft	
3/16 x 1	0.33	0.22	6061-T6
3/16 x 2	0.66	0.44	
3/16 x 3	0.98	0.66	
1/4 x 1	0.44	0.29	6061-T6
1/4 x 2	0.87	0.59	
1/4 x 4	1.75	1.18	
3/8 x 1	0.66	0.44	6061-T6
3/8 x 2	1.31	0.88	
3/8 x 4	2.62	1.76	
1/2 x 1	0.87	0.59	6061-T6511
1/2 x 2	1.75	1.18	
1/2 x 4	3.50	2.35	
1/2 x 6	5.25	3.53	
1 x 2	3.50	2.35	6061-T6511
1 x 4	7.00	4.70	
1 x 6	10.50	7.06	
1-1/2 x 2	5.25	3.53	6061-T6511
1-1/2 x 4	10.50	7.06	
1-1/2 x 6	15.75	10.58	
2 x 4	14.00	9.41	6061-T6511
2 x 6	21.00	14.11	
3 x 4	21.00	14.11	6061-T6511
3 x 6	31.50	21.17	

RECOMMENDED CHANNEL SIZES Extruded, Sharp Corner

Size	Flange Width	Web Thk.	UNIT WT.		Alloy and Temper
			kg/m	lb/ft	
1	1	1/8	0.61	0.41	6063-T52
2	2	1/4	2.32	1.56	
3	2	3/16	2.89	1.94	
3	1.498	0.258	2.57	1.73	6061-T6
4	1.720	0.320	3.72	2.50	
6	2.034	0.314	5.40	3.63	
8	2.290	0.250	6.32	4.25	

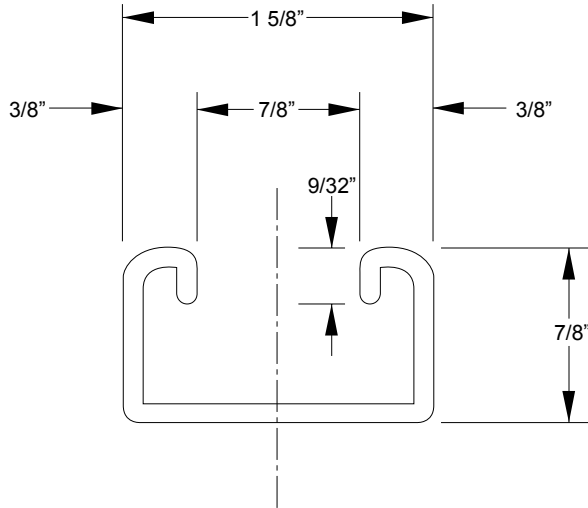
RECOMMENDED SQUARE TUBING SIZES Extruded, Square Corner 6063-T52

Size	Gauge	Wall	UNIT WT.	
			kg/m	lb/ft
1	1/8	0.125	0.76	0.51
2	1/8	0.125	1.68	1.13
4	1/8	0.125	3.33	2.24

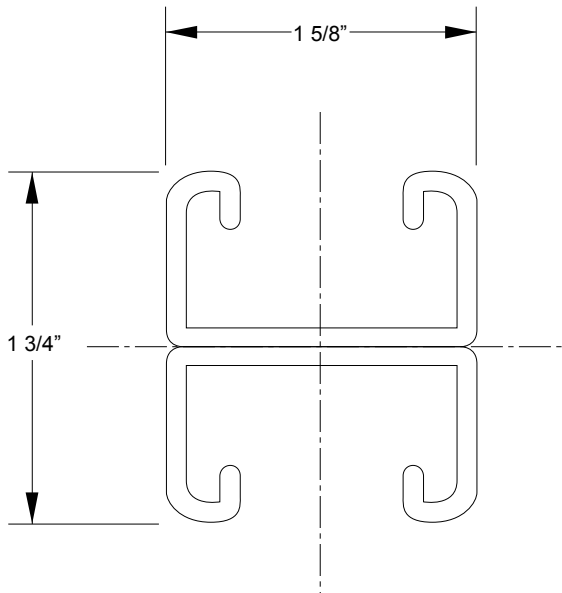
RECOMMENDED ANGLE SIZES Extruded, Sharp Corner

Leg	Leg	Thk.	UNIT WT.		Alloy and Temper
			kg/m	lb/ft	
1	1	3/16	0.60	0.40	6063-T52
1-1/2	1-1/2	3/16	0.92	0.62	6061-T6
2	2	3/16	1.28	0.86	6063-T52
3	3	1/4	2.50	1.68	6061-T6
4	4	1/4	3.39	2.28	
6	6	3/8	7.62	5.12	

SPECIAL STEEL SHAPES



ACTOO1: MATERIAL: 12 GAGE STEEL
1.35 Lbs/Ft (2.0 kg/m)



ACTOO2: MATERIAL: 12 GAGE STEEL
2.7 Lbs/Ft (4.0 kg/m)

RECOMMENDED COLD ROLLED METRIC STEEL STOCK SIZES

GLOBAL STANDARD COMPONENTS



Assembly

07/06/06

SHAPE: FLAT

SIZE	UNIT WT. kg/m
12 x 50	4.7
15 x 50	5.9
20 x 40	6.3
20 x 50	7.9
20 x 60	9.4
20 x 80	12.6
20 x 90	14.1
20 x 100	15.7
20 x 120	18.8
20 x 150	23.6
20 x 200	31.4
25 x 100	19.6
30 x 30	7.1
30 x 50	11.8
30 x 60	14.1
30 x 90	21.2
30 x 120	28.3
30 x 150	35.3
30 x 200	47.1
30 x 250	58.9
35 x 35	9.6
40 x 40	12.6
40 x 80	25.1
40 x 100	31.4
40 x 200	62.8
40 x 400	125.6
45 x 45	15.9
50 x 50	19.6
50 x 70	27.5
50 x 100	39.3
50 x 200	78.5
50 x 400	157.1
60 x 60	28.3
60 x 100	47.1
60 x 150	70.7
65 x 65	33.2
70 x 70	38.5
80 x 400	251.3
90 x 90	63.6
100 x 100	78.5
100 x 400	314.1
130 x 130	132.7
160 x 160	201.0

SHAPE: ROUND

SIZE	UNIT WT. kg/m
12	0.9
14	1.2
16	1.6
18	2.0
22	3.0
28	4.8
30	5.6
35	7.6
40	9.9
45	12.5
50	15.4
55	18.7
60	22.2
70	30.2
75	34.7
85	44.6
95	55.7
105	68.0
115	81.6
130	104.0
140	121.0
150	139.0
160	158.0
180	200.0
200	247.0
220	299.0
250	385.0
280	484.0
300	555.0
340	713.0
360	799.0

RECOMMENDED HOT ROLLED METRIC STEEL STOCK SIZES

GLOBAL STANDARD COMPONENTS



Assembly

07/06/06

SHAPE: FLAT

SIZE	UNIT WT. kg/m
4 x 12	0.6
4 x 25	0.8
5 x 20	0.8
5 x 25	1.0
5 x 30	1.2
5 x 35	1.4
5 x 40	1.6
5 x 50	2.0
5 x 60	2.4
6 x 16	0.8
6 x 20	0.9
6 x 25	1.2
6 x 30	1.4
6 x 32	1.5
6 x 40	1.9
6 x 50	2.4
6 x 60	2.8
6 x 70	3.3
6 x 80	3.8
6 x 90	4.2
8 x 8	0.5
8 x 20	1.3
8 x 25	1.6
8 x 30	1.9
8 x 35	2.2
8 x 40	2.5
8 x 50	3.1
8 x 60	3.8
8 x 70	4.4
8 x 80	5.0
8 x 90	5.7
8 x 100	6.3
10 x 10	0.8
10 x 20	1.6
10 x 25	2.0
10 x 30	2.4
10 x 35	2.7
10 x 40	3.1
10 x 50	3.9
10 x 60	4.7
10 x 70	5.5
10 x 80	6.3
10 x 90	7.1
10 x 100	7.9

SHAPE: FLAT

SIZE	UNIT WT. kg/m
12 x 12	1.1
12 x 25	2.3
12 x 35	3.3
12 x 40	3.8
12 x 50	4.7
12 x 60	5.7
12 x 70	6.6
12 x 100	9.4
14 x 14	1.5
15 x 30	3.5
15 x 35	4.1
15 x 50	5.9
15 x 60	7.1
15 x 70	8.2
15 x 80	9.4
15 x 90	10.6
15 x 100	11.8
15 x 140	16.5
16 x 16	2.0
16 x 50	6.3
16 x 60	7.5
16 x 70	8.8
16 x 80	10.1
16 x 100	12.6
18 x 18	2.5
20 x 20	3.1
20 x 32	5.0
20 x 40	6.3
20 x 50	7.9
20 x 70	11.0
25 x 25	4.9
25 x 50	9.8
25 x 63	12.4
25 x 80	15.7
25 x 200	39.3
30 x 30	7.1
30 x 50	11.8
32 x 63	15.8
32 x 80	20.1
40 x 40	12.6
40 x 80	25.1
50 x 50	19.6
50 x 100	39.3
80 x 80	50.3

SHAPE: ROUND

SIZE	UNIT WT. kg/m
3	0.06
4	0.10
5	0.15
6	0.22
7	0.30
8	0.39
10	0.62
12	0.89
14	1.2
16	1.6
18	2.0
20	2.5
22	3.0
25	3.9
28	4.8
30	5.6
35	7.6
40	9.9
45	12.5
50	15.4
60	22.2
70	30.2
80	39.5
90	50.0
100	61.7

PLATE

THICKNESS
1
1.5
2
2.5
3
5
6
8
10
12
15
18
20
22
25
30
35
40
45
50
55
60
65
70
80
90
100

RECOMMENDED METRIC STEEL ANGLE SIZES

GLOBAL STANDARD COMPONENTS



Assembly

12/19/07

Leg	Leg	Thk	UNIT WT. kg/m
20 x 20	3		0.87
25 x 25	3		1.1
25 x 25	4		1.4
30 x 30	3		1.3
30 x 30	4		1.8
35 x 35	4		2.1
35 x 35	5		2.6
40 x 20	4		1.8
40 x 40	4		2.4
40 x 40	6		3.5
45 x 30	4		2.2
45 x 30	5		2.7
45 x 45	5		3.3
50 x 40	5		3.3
50 x 50	5		3.7
50 x 50	7		5.1
55 x 55	6		4.9
55 x 55	8		6.4
55 x 55	10		7.9
60 x 30	5		3.3
60 x 40	5		3.7
60 x 40	7		5.1
60 x 60	6		5.4
65 x 65	7		6.8

Leg	Leg	Thk	UNIT WT. kg/m
70 x 70	7		7.3
70 x 70	9		9.3
75 x 55	5		4.9
75 x 55	7		6.8
80 x 40	6		5.4
80 x 65	6		6.5
80 x 65	8		8.6
80 x 65	10		10.6
80 x 80	8		9.5
80 x 80	10		11.8
90 x 60	6		6.8
90 x 90	9		12.1
100 x 50	8		8.9
100 x 50	10		11.0
100 x 65	9		11.0
100 x 100	10		14.9
100 x 100	12		17.7
100 x 100	20		29.5
110 x 110	10		16.5
110 x 110	12		19.6
120 x 80	10		14.9
120 x 120	13		23.2
130 x 65	10		14.5
150 x 75	9		15.3

A

RECOMMENDED METRIC STEEL TUBING SIZES

GLOBAL STANDARD COMPONENTS



Assembly

11/13/07

SQUARE AND RECTANGULAR TUBING

Size	Wall	UNIT WT. kg/m
20 x 20	1.5	0.83
20 x 40	2	1.7
20 x 60	2	2.3
25 x 25	2	1.4
30 x 30	2	1.7
30 x 40	2	2.0
30 x 40	3	2.8
30 x 50	2	2.3
34 x 34	2	1.9
40 x 40	2	2.3
40 x 40	2.5	2.8
40 x 40	4	4.2
40 x 40	5	5.0
40 x 52	4	5.0
40 x 60	3	4.2
40 x 80	5	8.1
45 x 45	2.5	3.2
50 x 50	3	4.2
50 x 50	4	5.5
50 x 90	4	8.0
52 x 52	3.5	5.1
60 x 60	3	5.2
60 x 60	3.5	6.0
60 x 80	4	8.0
70 x 70	3	6.1
80 x 80	4	9.2
80 x 120	3	9.0
90 x 90	6	15.0
100 x 100	6	16.9
100 x 200	6	26.3
120 x 120	6	20.7
140 x 140	6	24.4
160 x 160	6	28.3
200 x 200	6	35.7

ROUND TUBING

Size x Wall	UNIT WT. kg/m
4 x 1	0.07
6 x 1	0.12
6 x 1.5	0.17
6 x 2	0.20
8 x 1	0.17
8 x 2	0.30
10 x 1	0.22
10 x 2	0.39
12 x 1	0.27
12 x 2	0.49
15 x 1.5	0.50
15 x 2	0.64
15 x 3	0.89
16 x 1.5	0.54
16 x 2	0.69
16 x 2.5	0.83
18 x 1.5	0.61
18 x 2.5	0.96
18 x 3	1.11
20 x 1.5	0.68
20 x 3	1.26
22 x 1.5	0.76
22 x 2.5	1.2
22 x 3	1.4
25 x 3	1.6
28 x 2	1.3
28 x 3	1.9
30 x 2	1.4
35 x 3	2.4
42 x 3	2.9
80 x 3.5	6.6

A

RECOMMENDED METRIC ALUMINUM STOCK SIZES

GLOBAL STANDARD COMPONENTS



Assembly

07/06/06

ALUMINUM 6061-T6511 FLAT

Size	UNIT WT. kg/m
3 x 25	0.20
3 x 50	0.40
3 x 75	0.60
6 x 25	0.40
6 x 50	0.81
6 x 100	1.61

ALUMINUM 6061-T6 EXTRUDED ANGLE

Leg	Leg	Thk	UNIT WT. kg/m
25	25	3	0.38
50	50	3	0.78
50	50	4	1.51

ALUMINUM 6061-T6511 EXTRUDED ROUND TUBING

Size	UNIT WT. kg/m
10 x 3	0.18
25 x 3	0.56
25 x 6	0.96